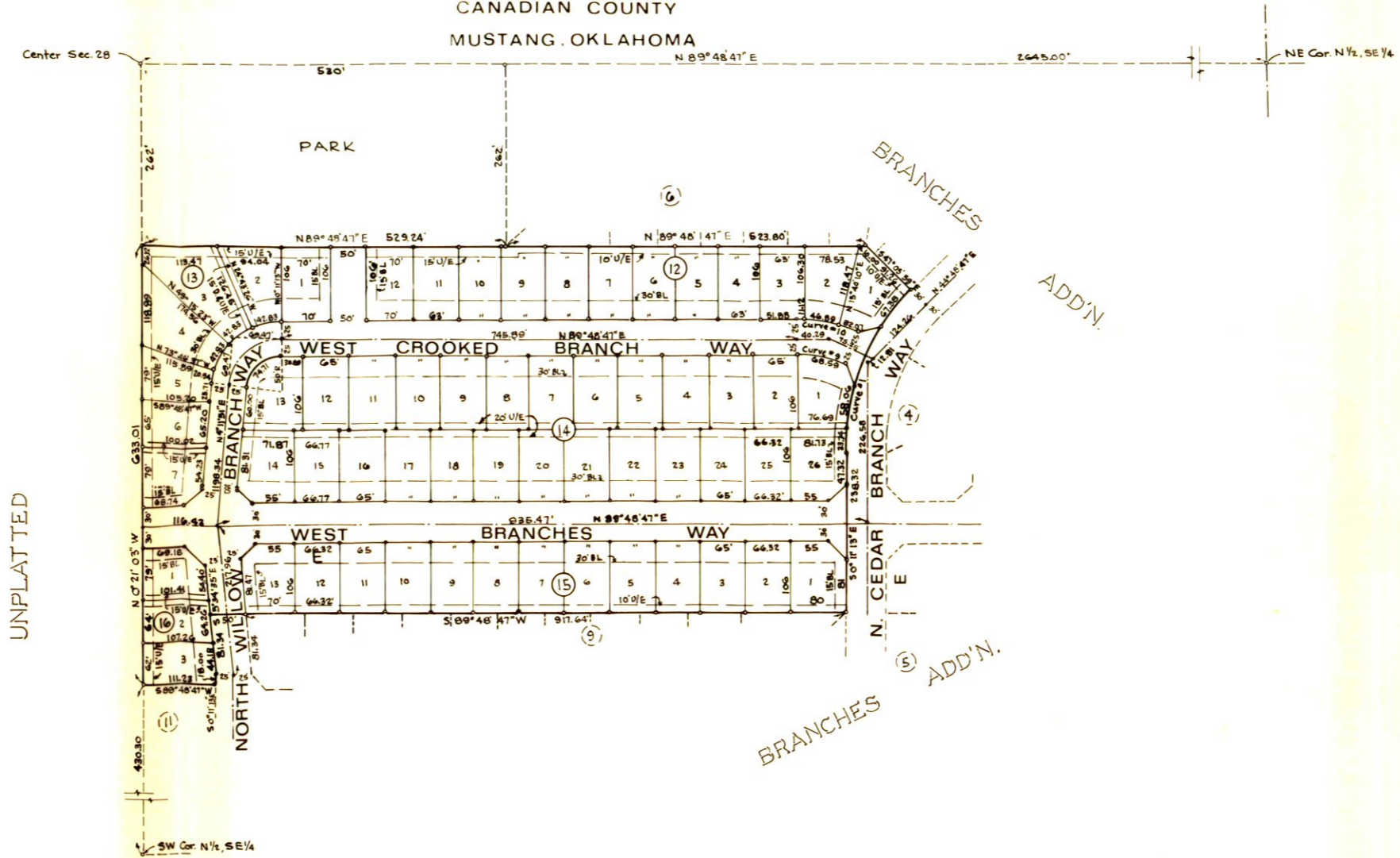


RE-PLAT NO. 2

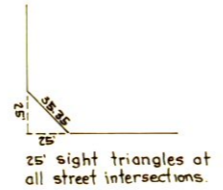
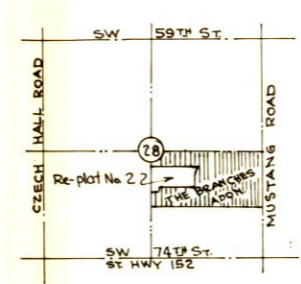
THE BRANCHES ADDITION

Being a subdivision of part of the N 1/2, SE 1/4, Sec. 28,
 T11N, R5W, of I.M.
 CANADIAN COUNTY
 MUSTANG, OKLAHOMA

CURVE DATA				
CURVE NO.	ANGLE	RADIUS	TANGENT	LENGTH
1	45°	330'	136.69	259.18
9	24°37'12"	199.63	31.83	68.59
10	24°37'12"	209.63	45.74	90.08



UNPLATTED



- NOTES:
1. There shall be no driveway access on "NORTH CEDAR BRANCH WAY"
 2. All utility easements are centered on lot lines unless otherwise shown.

Ridgway's, Inc. certifies that this reproduced copy meets the permanence requirement of the State of Oklahoma statute, section 1, 11 O.S. 1971, section 518 amended Sept. 5, 1975.

5888
KENNETH KLAFFKE
 CONSULTING ENGINEER
 1330 Classen Blvd.
 Oklahoma City, Okla.