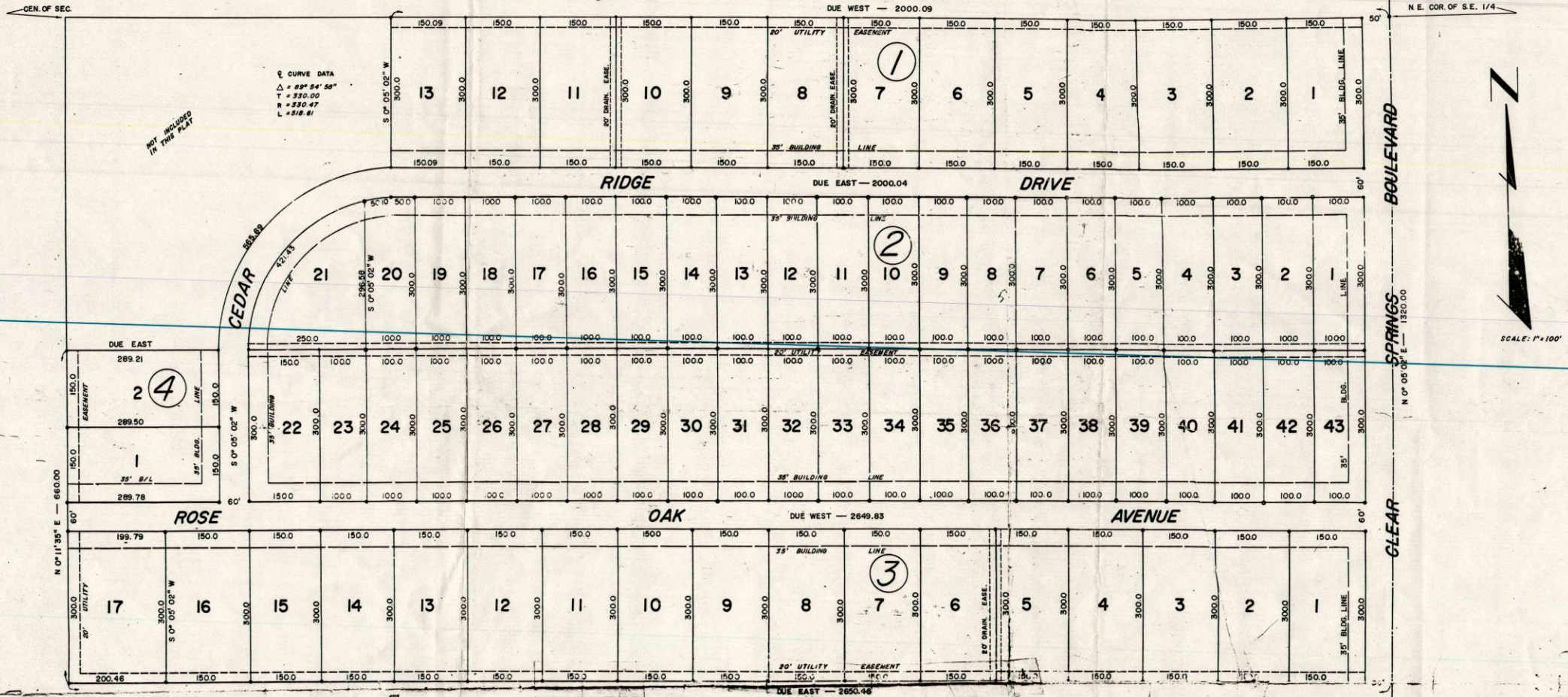


CEDAR RIDGE ADDITION

BEING A SUBDIVISION OF THE N 1/2 OF THE S.E. 1/4 OF SEC. 31, T 11 N, R 5 W, OF CITY OF MUSTANG, OKLAHOMA

State of Oklahoma
Canadian County, SS
Filed for record 4/13/1971
at 4:10 P.M. and recorded in
Book 37 Page 31
Fee \$ 5.00
FRANCES C. BREMSETH
COUNTY CLERK



SCALE: 1" = 100'

Gene Hildebrand

OKLAHOMA LAND SURVEYING SERVICE
 1101 S.W. 60th PH 632-3735
 OKLAHOMA CITY, OKLAHOMA
 GENE HILDEBRANT
 REGISTERED LAND SURVEYOR