

# CHISHOLM TRAIL ADDITION SECTION ONE

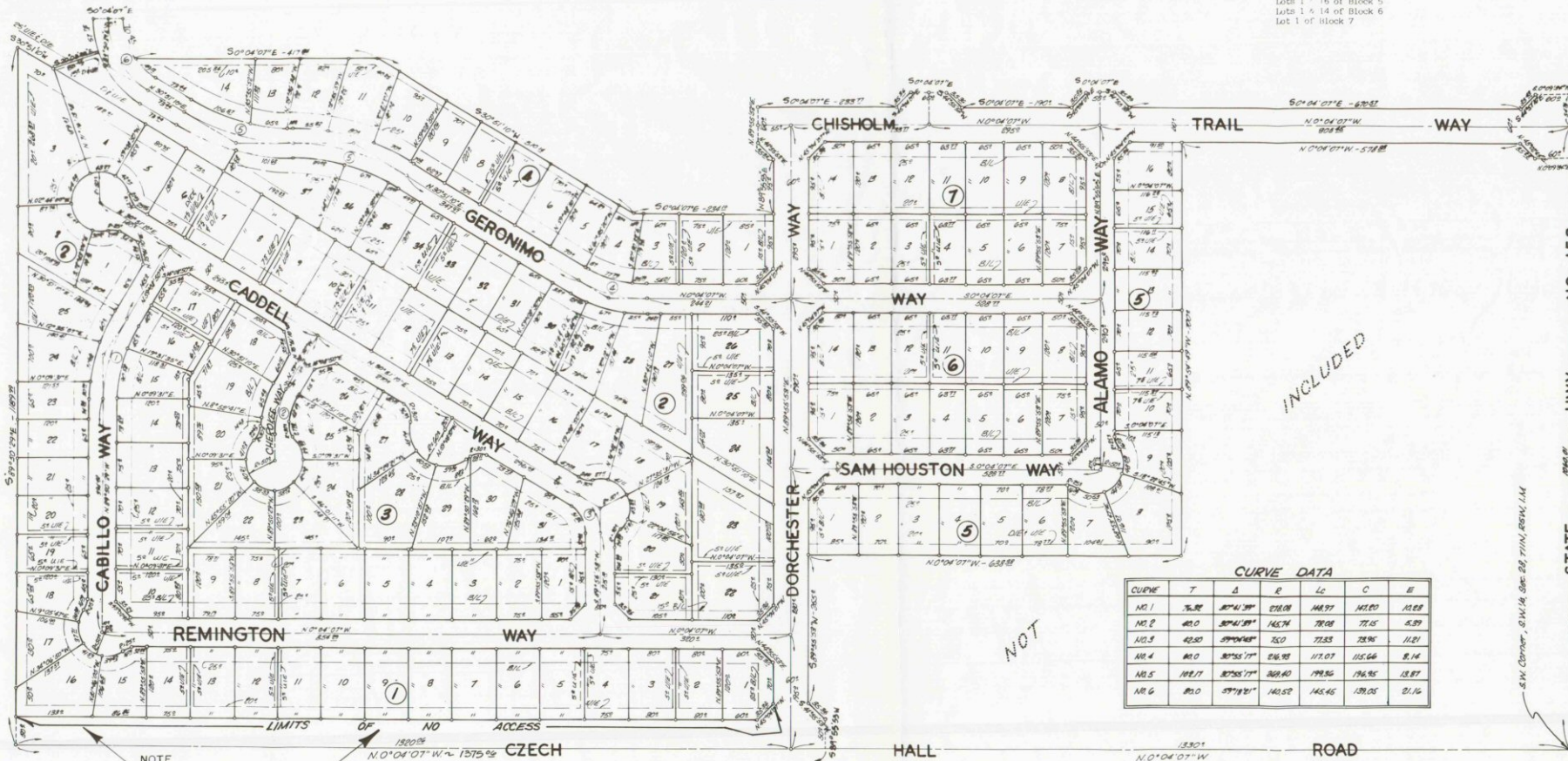
A PART OF THE SOUTHWEST 1/4, SECTION 28, TOWNSHIP 11 NORTH, RANGE 5 WEST, 1.M.  
MUSTANG, CANADIAN COUNTY, OKLAHOMA

## FINAL PLAT



NOTE: Entrance drives off of minor streets only must be provided on the following lots:

- Lot 1 of Block 1
- Lots 27 & 28 of Block 2
- Lot 1 of Block 4
- Lots 1 & 16 of Block 5
- Lots 1 & 14 of Block 6
- Lot 1 of Block 7



INCLUDED

CURVE DATA

CURVE	T	Δ	R	Lc	C	E
NO. 1	76.89	80°41'30"	278.08	44.97	141.03	12.68
NO. 2	42.0	80°41'30"	142.74	22.08	71.65	6.39
NO. 3	42.80	89°09'48"	75.0	73.53	73.96	11.21
NO. 4	86.0	80°26'37"	246.95	117.07	115.66	8.14
NO. 5	108.17	80°26'37"	369.40	179.56	176.95	13.87
NO. 6	86.0	89°18'25"	163.52	145.46	139.05	21.14

NOTE

DEVELOPER TO PROVIDE SIGHT-PROOF FENCING ALONG CZECH HALL ROAD FRONTAGE.

STATE HWY. NO. 152

S.W. Corner, S.W. 1/4 Sec. 28, T11N, R5W, 1M

This reproduction meets the requirements as outlined in Senate Bill 377, Section 518, as amended.



TRIANGLE/A & E, Inc.  
801 306 OKLAHOMA CITY 73101

