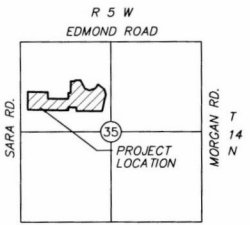
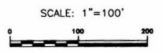
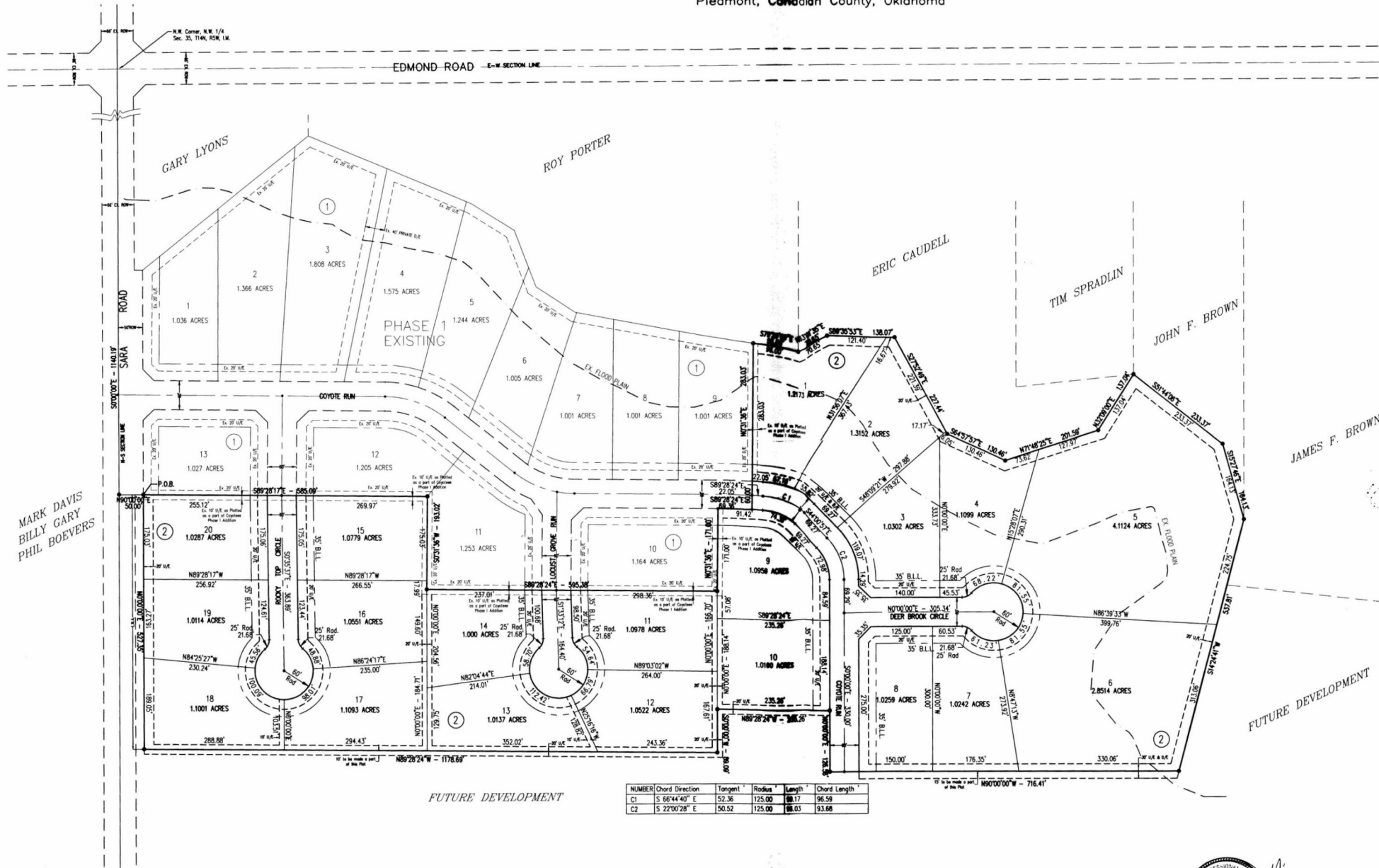


# FINAL PLAT COYOTEE SPRINGS PHASE II

A Subdivision of Part of the NW/4, Section 35, T14N-R5W, I.M.  
Piedmont, Canadian County, Oklahoma



LOCATION MAP  
SCALE: 1"=2000'

### LEGAL DESCRIPTION

A part of the Northwest Quarter of Section 35, township 14 North, Range 5 West of the Indian Meridian, Canadian County, Oklahoma more particularly described as follows:  
COMMENCING at the Northwest Corner of the Northwest Quarter of Section 35, T-14-N, R-5-W;

THENCE S 00°00'00" E along the West line of said Northwest Quarter, a distance of 1140.19 feet;  
THENCE N 90°00'00" E, a distance of 50.00 feet to the Southwest Corner of Lot 13, Block 1 of Coyotee Springs Phase I Addition to the City of Piedmont and the POINT OF BEGINNING;  
THENCE S 89°28'17" E along the South line of Lots 12 & 13, Block 1 of said Coyotee Springs Addition a distance of 565.05 feet to the Southeastery Corner of Lot 12, Block 1 of said Coyotee Springs Addition;  
THENCE S 00°31'36" W along the West line of Lot 11, Block 1 of said Coyotee Springs Addition, a distance of 193.02 feet to the Southwest Corner of said Lot 11;  
THENCE S 89°28'24" E along the South line of Lots 10 & 11, Block 1 of said Coyotee Springs Addition, a distance of 595.38 feet to the Southeast Corner of said Lot 10; a distance of 171.00 feet to the Northeast Corner of said Lot 10 and a point on the South Line of Coyote Run;  
THENCE S 89°28'24" E along the South R/W line of Coyote Run, a distance of 69.36 feet;  
THENCE N 00°31'36" E, a distance of 60.00 feet to a Point on the North R/W Line of Coyote Run, said Point being the Southeast Corner of Lot 9, Block 1 of said Coyotee Springs Addition;  
THENCE continuing N 00°31'36" E along the East line of said Lot 9, a distance of 283.03 feet to the Northeast Corner of said Lot 9;  
THENCE S 79°29'09" E, a distance of 96.00 feet;  
THENCE N 63°01'35" E, a distance of 70.65 feet;  
THENCE S 89°35'53" E, a distance of 138.07 feet;  
THENCE S 27°52'49" E, a distance of 227.44 feet;  
THENCE S 64°57'57" E, a distance of 130.46 feet;  
THENCE N 71°48'25" E, a distance of 201.59 feet;  
THENCE S 32°09'00" E, a distance of 137.04 feet;  
THENCE S 51°44'06" E, a distance of 233.37 feet;  
THENCE S 15°27'46" E, a distance of 164.13 feet;  
THENCE S 14°24'41" W, a distance of 537.81 feet;  
THENCE N 90°00'00" W, a distance of 716.41 feet;  
THENCE N 00°00'00" E and parallel with the West line of said Northwest Quarter, a distance of 527.35 feet, to the POINT OF BEGINNING.

Said tract of land contains 1,259,636.4500 square feet or 28.917 acres more or less.

NUMBER	Chord Direction	Tangent	Radius	Length	Chord Length
C1	S 66°44'40" E	52.36	125.00	88.17	96.59
C2	S 22°00'28" E	50.52	125.00	88.03	93.68

NOTES:  
1) All lots shown on this Plat must be used for single family residential development.

OWNER NAME  
COYOTEE SPRINGS L.L.C.  
P.O. BOX 850550  
403 W. VANDAMENT  
YUKON, OKLAHOMA 73085

DATE:  
06/24/02

LEGEND  
3/8" Iron Pin with P  
marked "Reddih-LS 13  
at  
Each Property Corner



R & J ASSOCIATES  
SURVEYING & MAPPING  
P.O. BOX 193  
MUSTANG, OK 73064  
(405) 376-4411  
C.A. # 1906  
Expires 6/30/03

W.R. Peacock, L.L.C.  
Consulting Engineers  
P.O. Box 720797 - Oklahoma City, OK 73172  
412 S. Mainway Road - Oklahoma City, OK  
(405) 557-2600 Fax (405) 577-2603  
Certificate of Authorization Number 2280  
Expiration Date: June 30, 2003