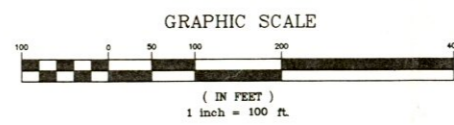
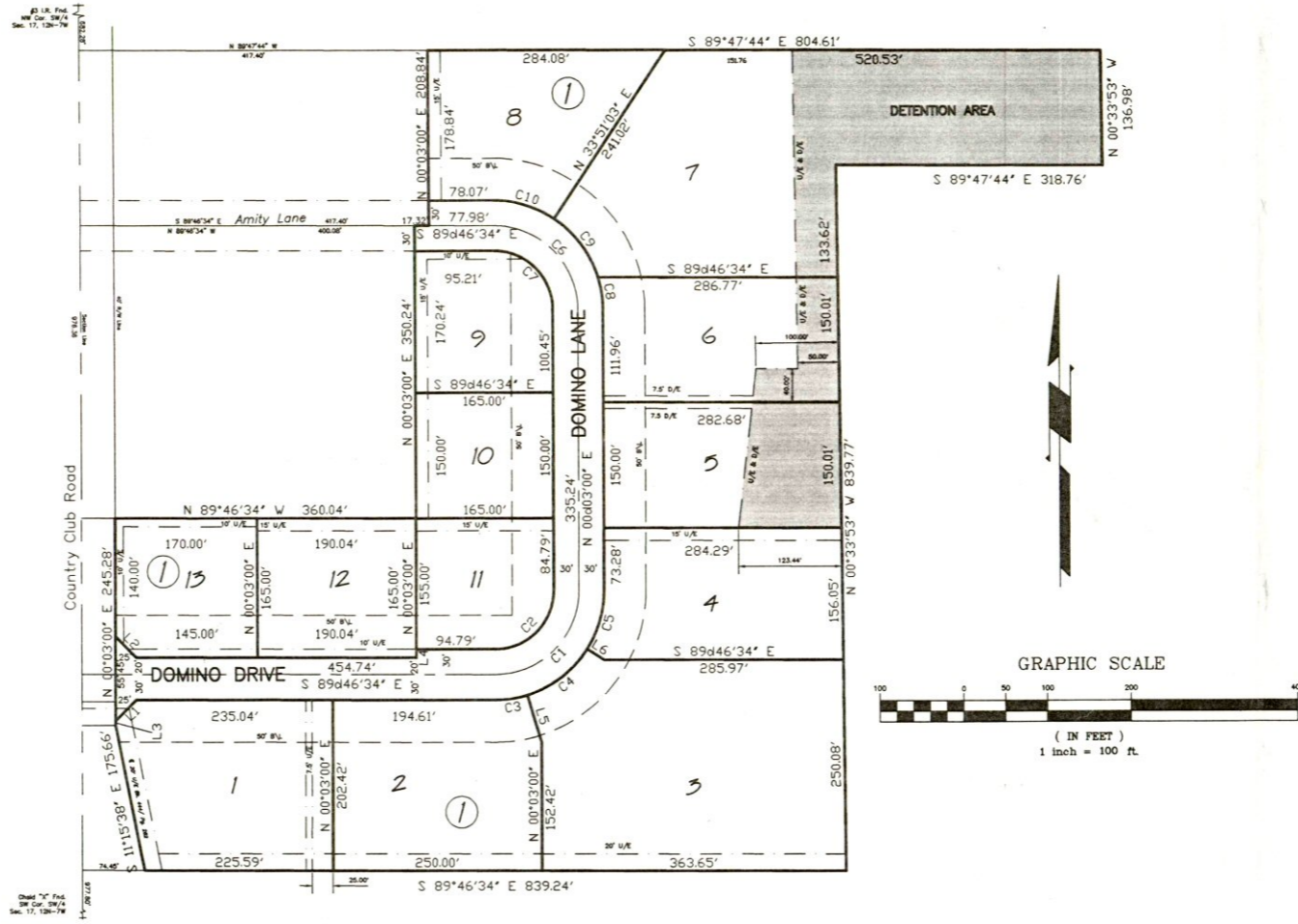
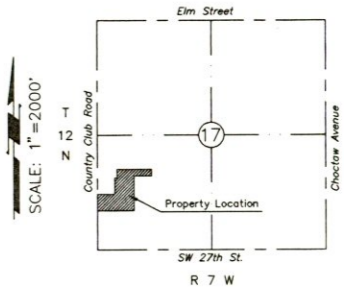


FINAL PLAT OF
DOMINO ADDITION
 AN ADDITION TO THE CITY OF EL RENO
 CANADIAN COUNTY, OKLAHOMA
 A PORTION OF THE SW 1/4 SEC. 17, T 12 N, R 7 W, I.M.



VICINITY MAP



NUMBER	DIRECTION	DISTANCE
L1	N 45d08'14" E	35.30 FT
L2	N 44d51'46" W	35.41 FT
L3	N 00d03'00" E	5.28 FT
L4	N 00d13'26" E	10.00 FT
L5	S 16d55'34" E	58.38 FT
L6	S 57d28'12" E	24.11 FT

NUMBER	I	LT	Ic	Da	Dc	CD	T	R	L=	LC=	E	FT	M	FT
C1		90d10'26"	90d10'26"	57d17'45"	152d46'18"	N 45d08'13" E	100.30	100.00	157.38	141.64	41.64	29.40		
C2		90d10'26"	90d10'26"	81d51'04"	152d46'18"	N 45d08'13" E	70.21	70.00	110.17	99.15	29.15	20.58		
C3		17d09'00"	17d09'00"	44d04'25"	45d14'23"	N 81d38'56" E	19.60	130.00	38.91	38.77	1.47	1.45		
C4		40d32'38"	40d32'38"	44d04'25"	45d14'23"	N 52d48'07" E	48.02	130.00	91.99	90.08	8.58	8.05		
C5		32d28'48"	32d28'48"	44d04'25"	45d14'23"	N 16d17'24" E	37.87	130.00	73.69	72.71	5.40	5.19		
C6		89d49'34"	89d49'34"	57d17'45"	152d46'18"	N 44d51'47" W	99.70	100.00	156.78	141.21	41.21	29.18		
C7		89d49'34"	89d49'34"	81d51'04"	152d46'18"	N 44d51'47" W	69.79	70.00	109.74	98.84	28.85	20.43		
C8		17d01'19"	17d01'19"	44d04'25"	45d14'23"	N 08d27'39" W	19.45	130.00	38.62	38.48	1.45	1.43		
C9		39d10'38"	39d10'38"	44d04'25"	45d14'23"	N 36d33'38" W	46.26	130.00	88.89	87.17	7.99	7.52		
C10		33d37'37"	33d37'37"	44d04'25"	45d14'23"	N 72d57'46" W	39.28	130.00	76.30	75.21	5.81	5.56		

LEGAL DESCRIPTION

A tract of land lying in and being a part of the Southwest Quarter (SW/4) of Section Seventeen (17), Township Twelve (12) North, Range Seven (7) West of the Indian Meridian, Canadian County, Oklahoma, being more particularly described as follows:

BEGINNING at a point 977.80 feet N00°03'00"E and 74.45 feet S89°46'34"E of the Southwest Corner of said SW/4;
 Thence N11°15'38" W a distance of 175.66 feet;
 Thence N00°03'00"E, parallel with the West line of said SW/4, a distance of 245.28 feet;
 Thence S89°46'34"E, parallel with the South line of said SW/4, a distance of 360.04 feet;
 Thence N00°03'00"E, parallel with the West line of said SW/4, a distance of 350.24 feet;
 Thence S89°46'34"E, parallel with the South line of said SW/4, a distance of 17.32 feet;
 Thence N00°03'00"E, parallel with the West line of said SW/4, a distance of 208.84 feet;
 Thence S89°47'44"E, parallel with the North line of said SW/4, a distance of 804.61 feet;
 Thence S00°33'53"E a distance of 136.98 feet;
 Thence N89°47'44"W, parallel with the North line of said SW/4, a distance of 318.76 feet;
 Thence S00°33'53"E a distance of 839.77 feet;
 Thence N89°46'34"W, parallel with the South line of said SW/4, a distance of 839.24 feet to the Point of Beginning.

Containing 15.70 acres, more or less.

BRAWLEY ENGINEERING CORP.
 6900 N. GLASSEN BLVD., OKLAHOMA CITY, OKLAHOMA 73116

BRAWLEY ENGINEERING CORP.
 SURVEYING ENGINEERS
 6900 N. GLASSEN BLVD., OKLAHOMA CITY, OKLAHOMA 73116

SURVEYING & MAPPING BY:
 CANADIAN COUNTY SURVEYING CO.
 CA 1600 (L.S.) EXPIRES: 6/30/95
 203 N. BICKFORD, SUITE 2
 EL RENO, OK. 405-262-0249

Final Plat of
DOMINO ADDITION
 PREPARED FOR
City of El Reno, Oklahoma