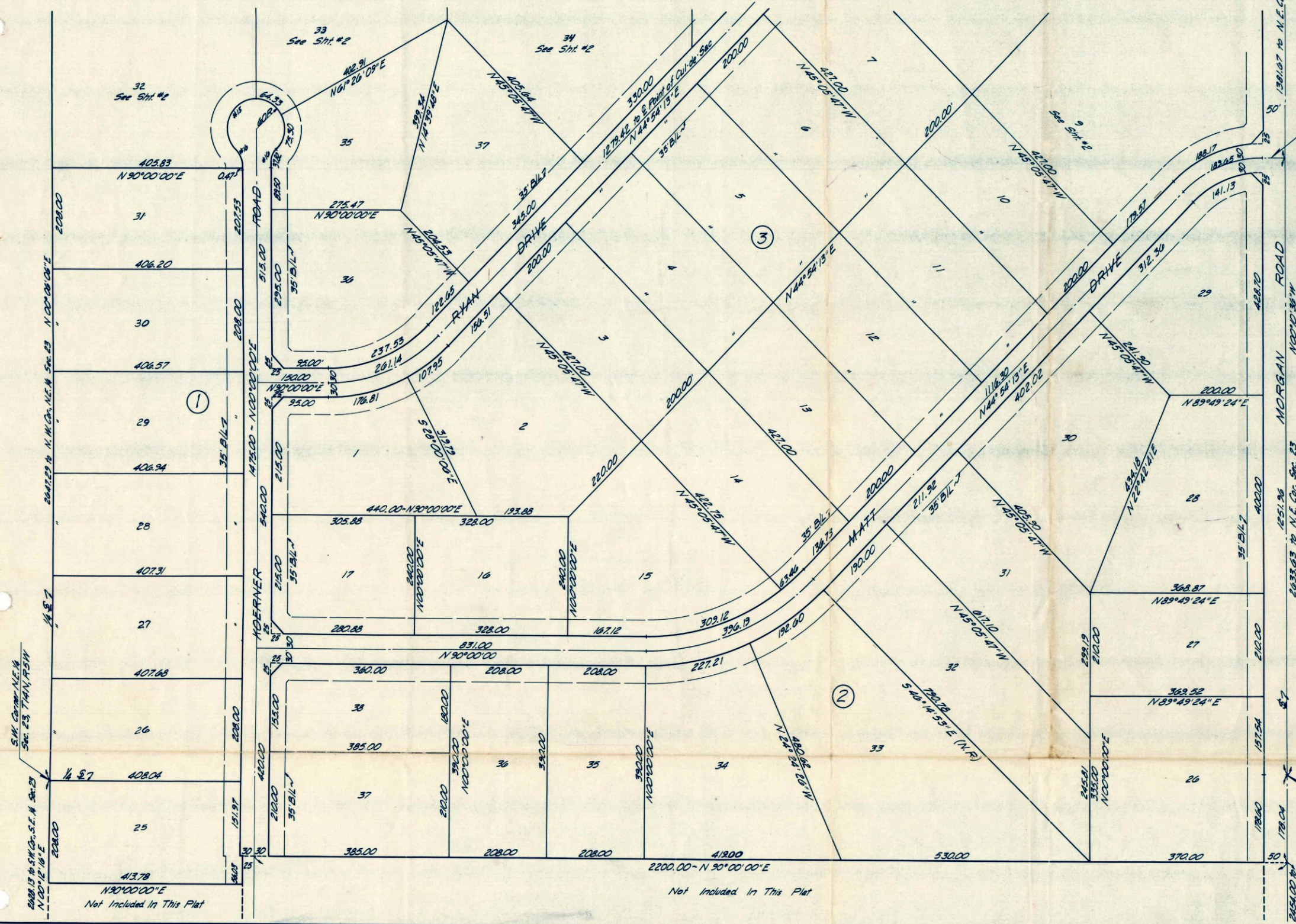


HIGHPOINT ESTATES

SECTION II

BEING A SUBDIVISION OF A PART OF THE S.E. 1/4 & N.E. 1/4 SEC. 23, T14N, R5W, I.M.
PIEDMONT, CANADIAN COUNTY, OKLAHOMA

L. L. RIDGWAY ENT., INC. certifies that this reproduced copy meets the permanence requirement of the State of Oklahoma statute, section 1, 110. S. 1971, section 518 amended Sept. 5, 1975.



SCALE: 1" = 100'

CURVE DATA

No.	Δ	D	T	L	R
6	44°55'11"	23'41'03"	100.00	183.65	241.90
7	44°55'11"	27'02'21"	87.60	166.13	211.90
8	44°55'11"	21'04'21"	112.40	213.17	271.90
9	45°05'47"	11°22'57"	209.00	396.19	503.37
10	45°05'47"	12°08'14"	136.54	372.98	473.37
11	45°05'47"	10°44'32"	221.45	413.81	533.37
12	45°05'47"	17°16'07"	137.76	261.14	331.79
13	45°05'47"	18°53'07"	129.30	237.53	301.79
14	45°05'47"	15°50'12"	150.21	284.76	361.79
15	266°41'00"	89°29'35"	-	273.27	60.00
16	43°20'30"	114°35'30"	13.78	37.82	50.00

NOTE:

1. Unless otherwise noted all lots have a 10' Drainage & Utility Easement on side lot lines.
2. Unless otherwise noted all lots have a 15' Drainage & Utility Easement on front & back lot lines.

S.E. Corner N.E. 1/4
Sec. 23, T14N, R5W

DODSON - ROBERTS
SURVEYING
P.O. BOX 432
BETHANY, OKLAHOMA