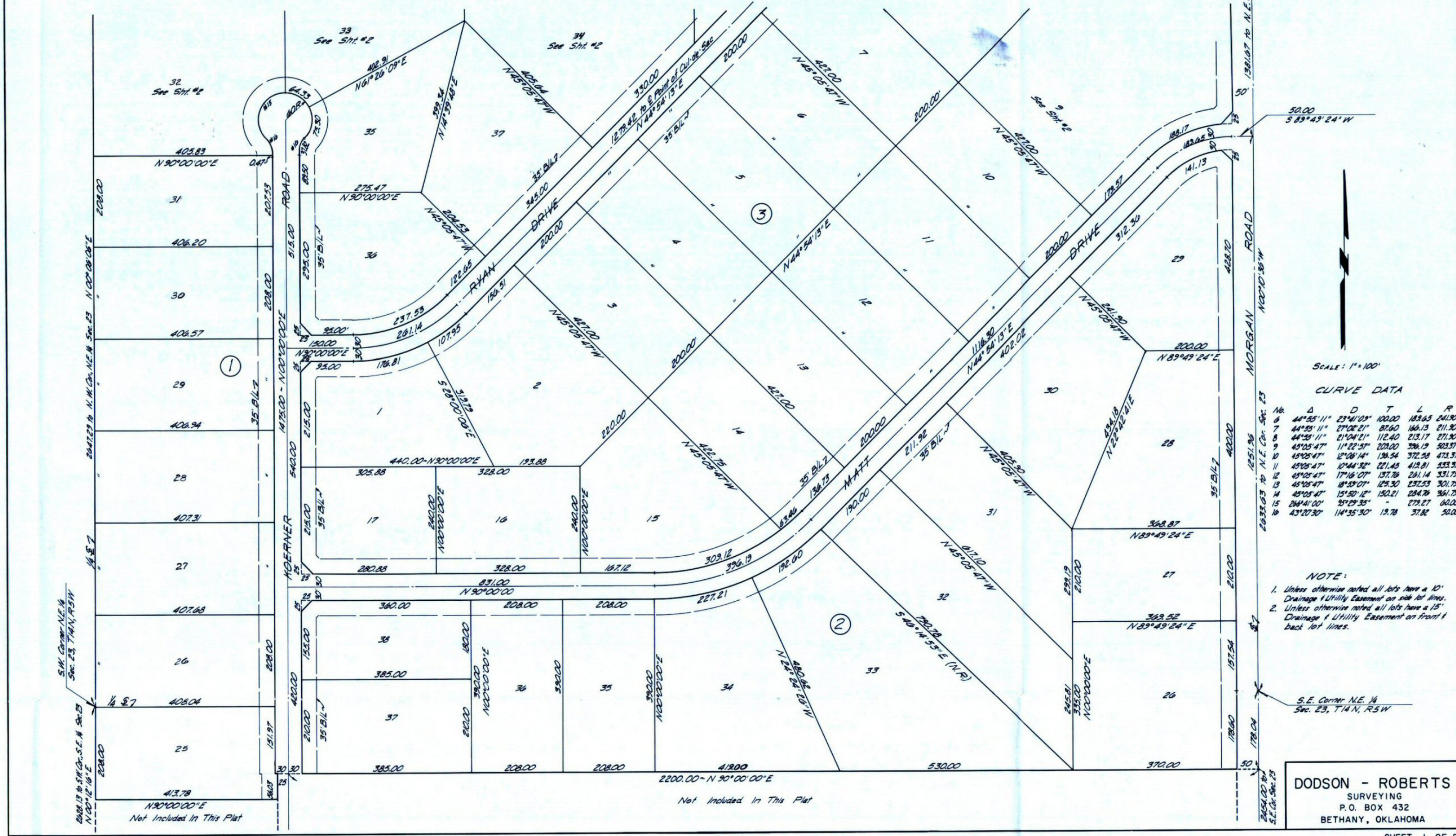


HIGHPOINT ESTATES SECTION II

BEING A SUBDIVISION OF A PART OF THE S.E. 1/4 & N.E. 1/4 SEC. 23, T14N, R5W, I.M.
PIEDMONT, CANADIAN COUNTY, OKLAHOMA



SCALE: 1" = 100'

CURVE DATA

No.	Δ	D	T	L	R
6	44°55'11"	23°41'03"	100.00	183.65	241.80
7	44°55'11"	27°02'21"	87.60	166.13	211.90
8	44°55'11"	21°04'21"	112.40	215.17	271.90
9	45°05'47"	11°22'51"	203.00	396.19	503.37
10	45°05'47"	12°08'14"	196.54	372.59	473.37
11	45°05'47"	10°44'32"	221.45	412.81	533.37
12	45°05'47"	17°16'07"	137.76	261.14	331.79
13	45°05'47"	18°59'07"	129.30	252.53	301.79
14	45°05'47"	15°50'12"	150.21	284.79	361.79
15	28°41'00"	35°29'35"	-	272.27	60.00
16	43°20'30"	14°55'30"	19.78	37.82	50.00

NOTE:

1. Unless otherwise noted all lots have a 10' Drainage & Utility Easement on side lot lines.
2. Unless otherwise noted all lots have a 15' Drainage & Utility Easement on front & back lot lines.

DODSON - ROBERTS
SURVEYING
P.O. BOX 432
BETHANY, OKLAHOMA