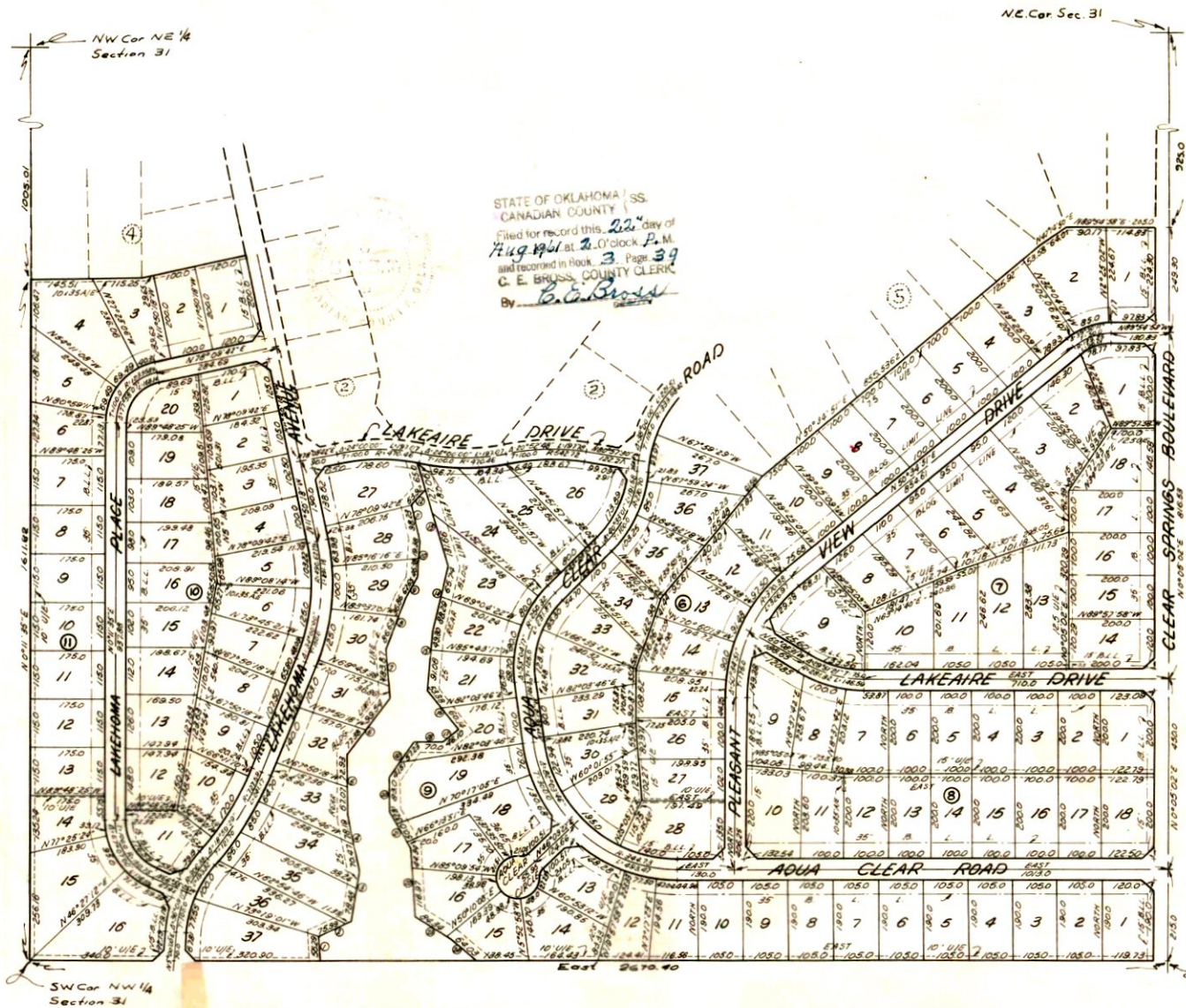


# LAKEHOMA ACRES

A Subdivision in the NE ¼ Sec. 31, T11N R5W 1M.  
Mustang, Canadian County, Oklahoma  
Second Addition



BEARING	LENGTH
1 N7°19'29"W	56.29
2 N66°22'14"E	87.32
3 N9°51'57"E	116.72
4 N19°39'14"W	148.66
5 NORTH	140.00
6 N42°42'34"E	176.92
7 N4°45'49"W	120.42
8 N21°22'14"E	123.49
9 N28°36'38"E	62.65
10 N5°24'46"E	65.76
11 N14°44'37"W	98.23
12 N32°32'50"E	53.92
13 N16°48'00"W	258.72
14 N13°08'02"E	154.03
15 N4°05'08"E	140.36
16 N37°52'30"W	114.02
17 N49°53'55"E	46.10
18 EAST	70.0
19 N33°51'04"E	98.74
20 NORTH	83.0
21 N29°06'05"W	102.81
22 N3°33'15"W	161.31
23 N57°59'41"W	94.34
24 N38°39'36"W	64.03

**n**