

# FINAL PLAT of LIFE STYLE ADDITION

BEING A PART OF THE S.W. 1/4, SECTION 25, T12N, R5W, I.M.  
AN ADDITION TO THE CITY OF OKLAHOMA CITY, CANADIAN COUNTY, OKLAHOMA

EXISTING MOBILE HOME PARK  
(UNRECORDED PLAT)

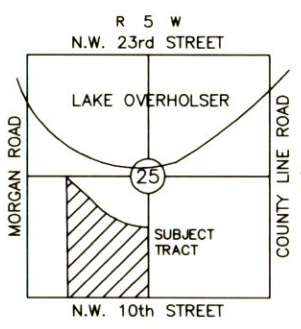
NORTH LINE OF THE S.W. 1/4  
SECTION 25,  
T12N, R5W, I.M.  
FND #4 BAR w/  
CA 794 CAP

MORGAN RD.  
S.W. CORNER, S.W. 1/4,  
SECTION 25,  
T12N, R5W, I.M.  
FND 1 1/2" I.P.

FND MAGNETIC  
NAIL & SHINER

FND #3 BAR

SCALE: 1"=100'



### NOTE

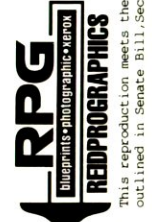
THIS SURVEY MEETS OR EXCEEDS THE REQUIREMENTS SET FORTH BY THE "OKLAHOMA MINIMUM STANDARDS FOR THE PRACTICE OF LAND SURVEYING" AS ADOPTED BY THE OKLAHOMA STATE BOARD OF REGISTRATION FOR PROFESSIONAL ENGINEERS AND LAND SURVEYORS, SEPTEMBER 17TH, 1993

### NOTE:

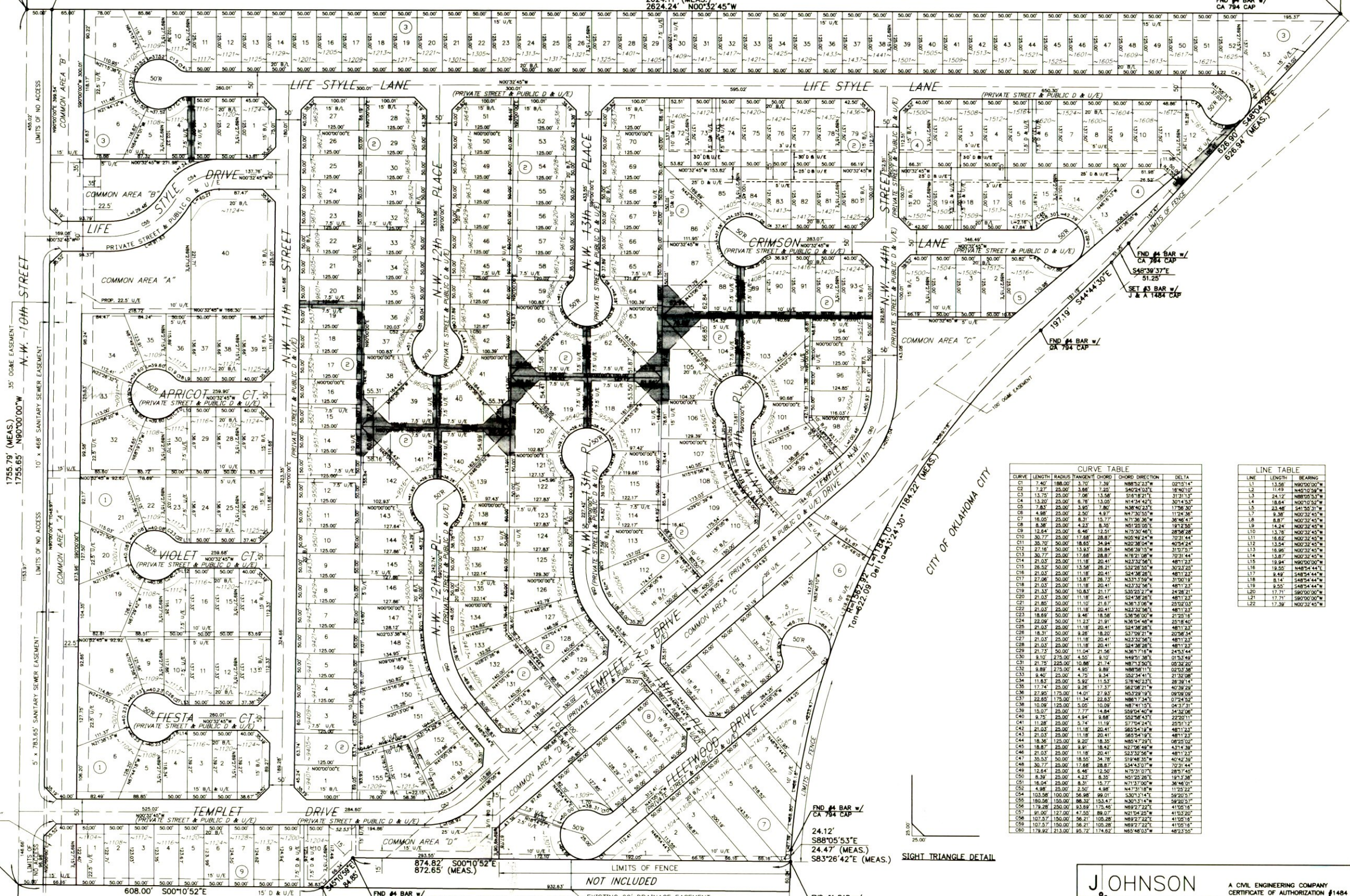
- a.) The grantor hereby agrees that the grantor, its heirs, its successors, grantees or assigns will maintain and replace private roads and drives when it becomes necessary due to normal maintenance or repair.
- b.) All maintenance of privately owned drainage channels, common areas, private drives, and utilities located herein shall be the responsibility of the Property Owner or Property Owner's Association comprising all lot owners owning property within a tract comprising the Planned Unit Development of Life Style Addition.
- c.) The streets are private and are not maintained by the City of Oklahoma City but will remain open or accessible for emergency vehicles and public utility vehicles. The property owners association shall be responsible for maintenance of the private streets and all common areas.

DENOTES PEDESTRIAN PATHWAY, PRIVATE PARK & PUBLIC UTILITY EASEMENT CROSS FENCING AND FENCING OF ACTUAL PROPERTY LINES WITHIN THIS SPACE IS PROHIBITED. FENCING OR SCREENING WILL BE PERMITTED ON PERIMETER TO PROVIDE AND CREATE THE OPEN SPACE.

S.E. CORNER S.W. 1/4,  
SECTION 25,  
T12N, R5W, I.M.  
FND. P.K. NAIL  
& SHINER



This reproduction meets the requirements as outlined in Senate Bill 111, Sec. 516, as amended



CURVE	LENGTH	RADIUS	CHORD	CHORD DIRECTION	DELTA
C1	7.40	188.00	3.70	3.30	60°25'14"
C2	7.27	25.00	3.68	7.20	54°02'43"
C3	13.20	25.00	7.06	13.58	118°10'10"
C4	13.20	25.00	6.78	13.00	118°10'10"
C5	7.87	25.00	3.93	7.80	54°02'43"
C6	4.98	25.00	2.49	4.97	30°10'55"
C7	18.00	25.00	9.31	15.77	117°36'30"
C8	8.36	25.00	4.23	8.30	54°02'43"
C9	12.44	25.00	6.22	12.53	117°36'30"
C10	30.77	25.00	17.68	28.87	117°36'30"
C11	38.70	50.00	18.85	34.84	117°36'30"
C12	27.90	50.00	13.95	28.87	117°36'30"
C13	30.77	25.00	17.68	28.87	117°36'30"
C14	21.03	25.00	11.18	20.41	117°36'30"
C15	21.03	25.00	11.18	20.41	117°36'30"
C16	21.03	25.00	11.18	20.41	117°36'30"
C17	21.03	25.00	11.18	20.41	117°36'30"
C18	21.03	25.00	11.18	20.41	117°36'30"
C19	21.03	25.00	11.18	20.41	117°36'30"
C20	21.03	25.00	11.18	20.41	117°36'30"
C21	21.03	25.00	11.18	20.41	117°36'30"
C22	21.03	25.00	11.18	20.41	117°36'30"
C23	18.89	50.00	9.48	18.88	117°36'30"
C24	22.09	50.00	11.23	21.91	117°36'30"
C25	21.03	25.00	11.18	20.41	117°36'30"
C26	18.31	50.00	9.28	18.20	117°36'30"
C27	21.03	25.00	11.18	20.41	117°36'30"
C28	21.03	25.00	11.18	20.41	117°36'30"
C29	21.03	25.00	11.18	20.41	117°36'30"
C30	8.10	275.00	4.05	8.10	117°36'30"
C31	21.75	225.00	10.88	21.74	117°36'30"
C32	8.89	275.00	4.45	8.88	117°36'30"
C33	8.40	25.00	4.20	8.40	117°36'30"
C34	11.84	25.00	5.92	11.83	117°36'30"
C35	17.24	25.00	8.62	17.23	117°36'30"
C36	27.80	175.00	14.01	27.83	117°36'30"
C37	22.88	175.00	11.34	22.88	117°36'30"
C38	10.09	125.00	5.00	10.09	117°36'30"
C39	15.07	25.00	7.77	14.84	117°36'30"
C40	8.75	25.00	4.38	8.88	117°36'30"
C41	11.28	25.00	5.74	11.19	117°36'30"
C42	21.03	25.00	11.18	20.41	117°36'30"
C43	21.03	25.00	11.18	20.41	117°36'30"
C44	18.30	125.00	9.20	18.35	117°36'30"
C45	18.87	25.00	9.41	18.82	117°36'30"
C46	12.44	25.00	6.22	12.53	117°36'30"
C47	35.53	50.00	18.55	34.78	117°36'30"
C48	30.77	25.00	17.68	28.87	117°36'30"
C49	12.44	25.00	6.22	12.53	117°36'30"
C50	8.36	25.00	4.23	8.30	117°36'30"
C51	18.04	25.00	9.02	18.07	117°36'30"
C52	18.08	150.00	9.04	18.08	117°36'30"
C53	179.28	250.00	93.69	179.48	117°36'30"
C54	103.56	100.00	56.98	99.01	117°36'30"
C55	102.87	150.00	56.21	102.87	117°36'30"
C56	102.87	150.00	56.21	102.87	117°36'30"
C57	102.87	150.00	56.21	102.87	117°36'30"
C58	102.87	150.00	56.21	102.87	117°36'30"
C59	102.87	150.00	56.21	102.87	117°36'30"
C60	179.82	213.00	95.72	174.62	117°36'30"

LINE	LENGTH	BEARING
L1	13.56	N89°00'00"W
L2	11.49	N45°00'30"W
L3	24.12	N89°00'30"W
L4	18.64	N45°00'30"W
L5	23.46	S41°30'30"W
L6	9.36	N00°30'45"W
L7	8.36	N00°30'45"W
L8	8.36	N00°30'45"W
L9	14.24	N00°30'45"W
L10	13.78	N00°30'45"W
L11	18.62	N00°30'45"W
L12	13.54	N00°30'45"W
L13	18.96	N00°30'45"W
L14	13.87	N00°30'45"W
L15	19.84	N89°00'00"W
L16	19.85	S45°00'44"W
L17	9.49	S45°00'44"W
L18	8.14	S45°00'44"W
L19	9.00	S45°00'44"W
L20	17.71	S89°00'00"W
L21	17.71	S89°00'00"W
L22	17.71	S89°00'00"W

FND #4 BAR w/  
CA 794 CAP  
24.12'  
S88°05'53"E  
24.47' (MEAS.)  
S83°26'42"E (MEAS.)

SIGHT TRIANGLE DETAIL

EXISTING MOBILE HOME PARK  
(UNRECORDED PLAT)

NOT INCLUDED  
EXISTING 60' DRAINAGE EASEMENT  
RECORDED IN BK. 1738 PG. 440

J. JOHNSON & ASSOCIATES, INC.  
A CIVIL ENGINEERING COMPANY  
CERTIFICATE OF AUTHORIZATION #1484  
5520 N. FRANCIS - OKLAHOMA CITY, OK 73118 - 405-843-8075