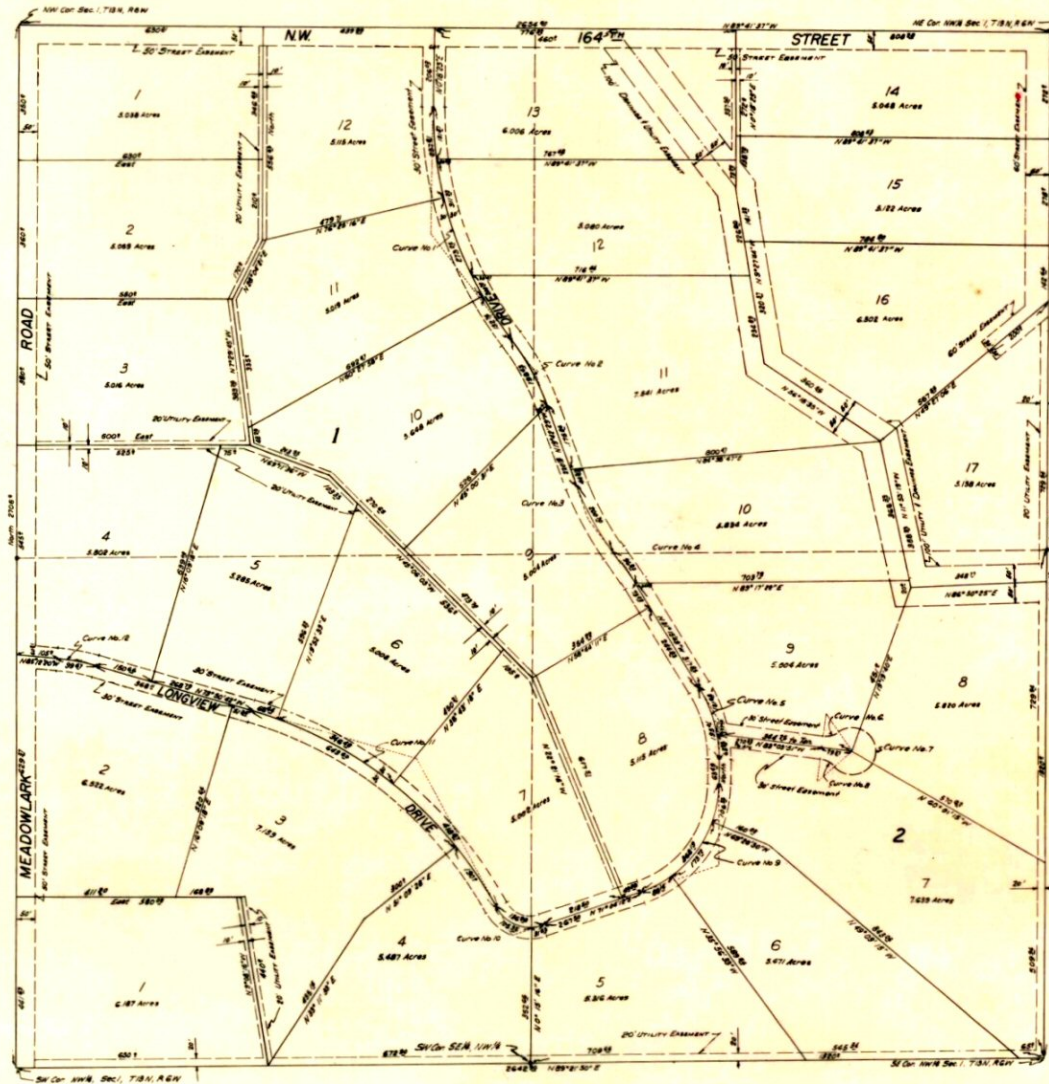


LONGVIEW ACRES

A Subdivision of the NW 1/4, Sec. 1, T. 13-N. R. 6-W.
CANADIAN COUNTY, OKLA.

State of Oklahoma 38
Canadian County June 26 1968
Filed for record
at 2:30 P.M. recorded in
Book 4 Page 12
Fee \$5.00
FILED IN C. BREWSTER
County Clerk
By Sonnie Rose 7-30



CURVE DATA				
No.	R	T	L	Δ
1	981.28	333.98	643.82	37°35'32"
2	646.79	100.00	198.43	17°34'40"
3	587.26	101.34	200.70	19°34'53"
4	690.72	48.46	96.80	8°01'33"
5	357.39	100.00	195.01	31°15'49"
6	60.00	22.68	43.36	41°24'35"
7	60.00	—	275.22	262°49'10"
8	60.00	22.68	43.36	41°24'35"
9	296.83	212.00	368.19	71°04'12"
10	97.60	82.50	136.98	80°25'16"
11	1053.30	440.00	833.60	45°20'10"
12	502.69	50.00	99.67	11°21'38"

Scale 1" = 200'

PHILLIPS & STONG ENGINEERING CO.
CONSULTING ENGINEERS
2832 Wilshire Blvd. Okla. City