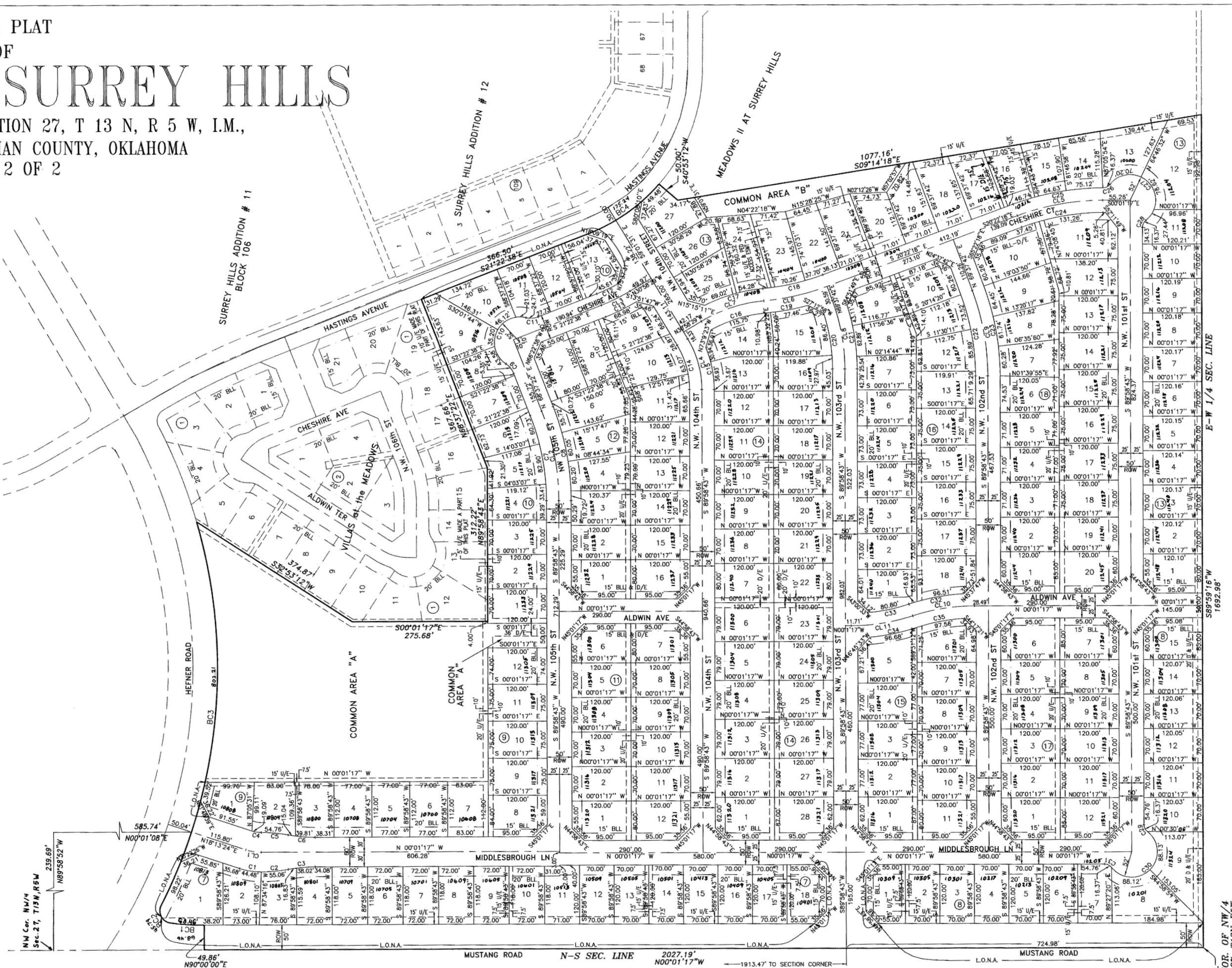


# FINAL PLAT OF MEADOWS AT SURREY HILLS

A PART OF THE NW/4 OF SECTION 27, T 13 N, R 5 W, I.M.,  
OKLAHOMA CITY, CANADIAN COUNTY, OKLAHOMA  
SHEET 2 OF 2

Number	Radius	Delta Angle	Chord Bearing	Chord Distance	Arc Distance
CL1	100.00	18°14'41"	N 09°06'04" E	31.71	31.84
CL2	900.00	21°21'21"	N 79°18'03" W	185.29	186.36
CL3	387.00	09°35'51"	S 26°10'34" E	64.75	64.83
CL4	200.00	30°57'12"	S 74°30'07" W	106.74	108.05
CL5	500.00	20°21'01"	N 10°11'47" W	176.66	177.59
CL6	500.00	15°06'36"	N 12°48'60" W	131.48	131.86
CL7	300.00	25°42'47"	N 18°07'08" W	133.51	134.63
CL8	400.00	20°21'01"	N 79°48'13" E	141.33	142.07
CL9	500.00	20°21'01"	N 79°48'13" E	176.66	177.59
CL10	400.00	18°11'42"	N 09°07'08" W	126.49	127.02
CL11	400.00	18°11'42"	N 09°07'08" W	126.49	127.02
BC1	519.68	07°32'52"	N 03°46'28" E	68.41	68.46
BC2	25.00	104°56'36"	N 60°01'10" E	39.65	45.79
BC3	1068.76	43°00'21"	S 84°32'19" E	783.51	802.21
BC4	362.00	27°44'10"	S 35°14'43" E	173.53	175.24
C1	140.00	18°12'17"	S 09°07'16" W	44.30	44.48
C2	300.00	10°30'56"	S 05°14'20" E	54.98	55.06
C3	300.00	10°28'31"	S 05°15'33" E	54.77	54.85
C4	60.00	18°13'37"	S 09°06'36" W	19.01	19.09
C5	300.00	10°27'27"	S 05°13'31" W	54.68	54.76
C6	300.00	10°28'31"	S 05°12'59" E	54.77	54.85
C7	475.00	21°21'21"	N 79°18'03" E	176.02	177.05
C8	525.00	21°21'21"	N 79°18'03" E	194.55	195.68
C9	40.00	35°23'28"	N 50°55'38" E	24.32	24.71
C10	52.00	160°46'56"	S 66°22'38" E	102.54	145.92
C11	40.00	35°23'28"	S 03°40'54" E	24.32	24.71
C12	362.00	07°13'06"	S 25°00'49" E	45.58	45.61
C13	412.00	09°34'25"	S 26°11'17" E	68.76	68.84
C14	175.00	30°57'12"	N 74°30'07" E	93.40	94.54
C15	225.00	22°22'36"	N 78°47'25" E	87.32	87.87
C16	275.00	24°06'59"	S 17°19'11" E	114.90	115.75
C17	325.00	21°44'17"	S 16°07'50" E	122.57	123.30
C18	475.00	15°06'36"	S 12°48'60" E	124.90	125.27
C19	525.00	09°39'07"	S 10°05'16" E	88.34	88.44
C20	375.00	17°28'31"	S 81°14'27" W	113.93	114.38
C21	425.00	17°44'00"	S 81°06'43" W	131.02	131.54
C22	475.00	20°21'01"	N 79°48'13" E	167.82	168.71
C23	525.00	20°21'01"	N 79°48'13" E	185.49	186.47
C24	475.00	20°21'01"	S 10°11'43" E	167.82	168.71
C25	525.00	20°21'01"	S 10°11'43" E	185.51	186.49
C26	18.00	52°06'09"	S 26°04'12" E	15.81	16.37
C27	52.00	194°11'60"	S 44°58'43" W	103.20	176.25
C28	18.00	52°06'00"	N 63°58'17" W	15.81	16.37
C29	18.00	52°06'00"	S 63°55'43" W	15.81	16.37
C30	52.00	194°11'60"	N 45°01'17" W	103.20	176.25
C31	18.00	52°06'00"	N 26°01'43" E	15.81	16.37
C32	425.00	15°17'34"	N 10°34'12" W	113.10	113.44
C33	375.00	12°20'44"	N 12°02'37" W	80.65	80.80
C34	425.00	13°02'02"	N 11°41'58" W	96.47	96.68
C35	375.00	14°54'20"	N 10°45'48" W	97.28	97.56



SCALE 1" = 100'  
BASIS OF BEARING  
WEST LINE OF NW/4=N 00°01'17" W

LEGEND  
L.O.N.A. = LIMITS OF NO ACCESS  
• = SET IRON PIN  
○ = FOUND IRON PIN

MEADOWS AT SURREY HILLS  
PLAT BY: ANCHOR ENGINEERING, L.L.C.  
CA 4161 EXP. 6-30-06  
10804 QUAIL PLAZA DR., SUITE 200  
OKLAHOMA CITY, OKLAHOMA  
405-749-9998  
LOV02004

All Monuments, either found or set, will be shown on the plat per Oklahoma Surveying Minimum Standards. Include type of monuments set at property/block and centerline of Public Street R/W.



*Jimmy O. Stacy*

P.O.B. OF NW/4  
SW COR. T13N-R5W  
SEC. 27.