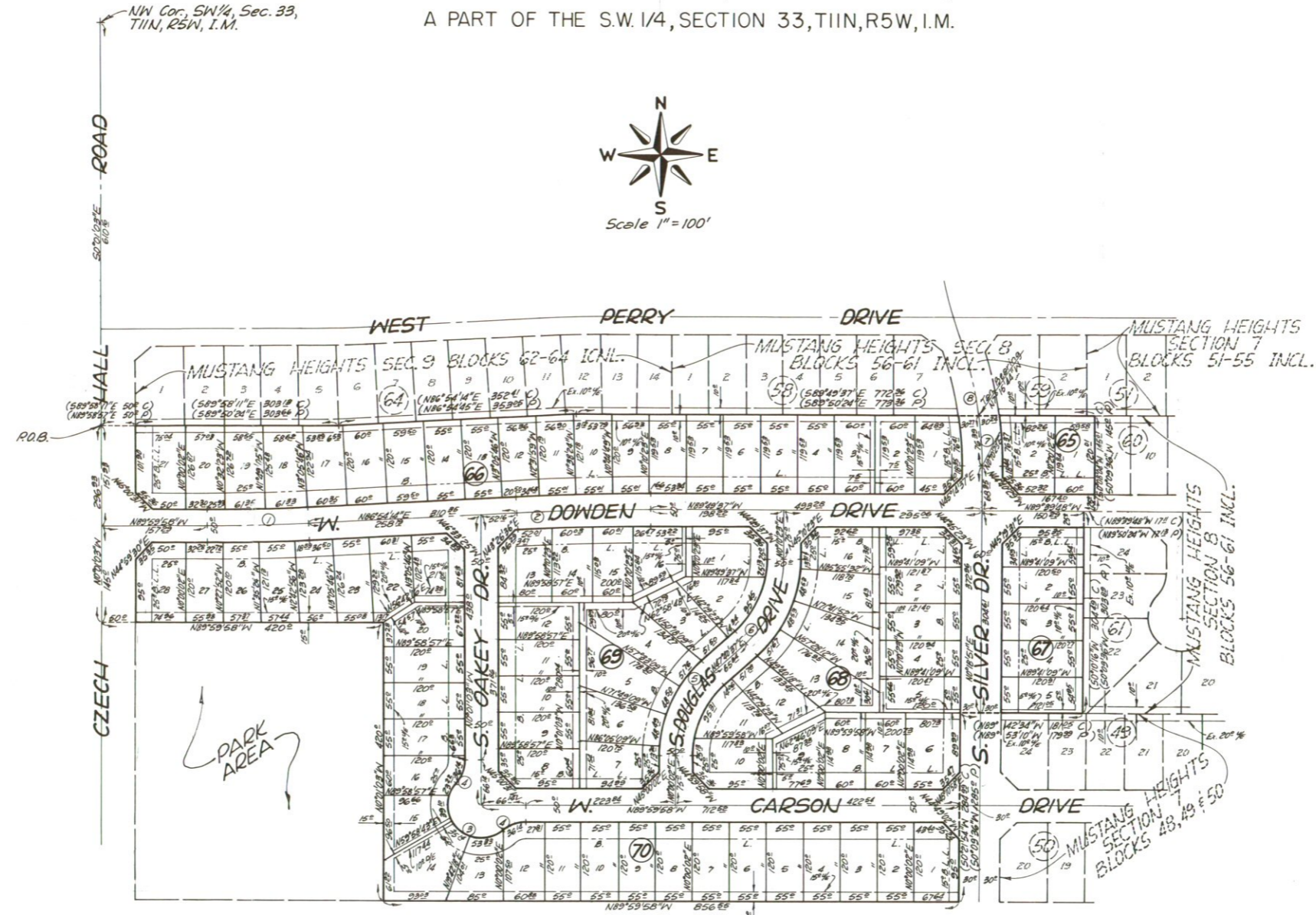


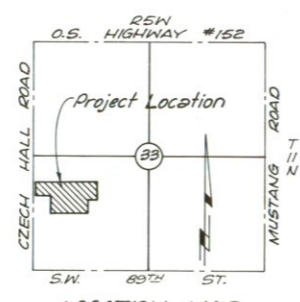
MUSTANG HEIGHTS SECTION 10

BLOCKS 65-70, INCLUSIVE

AN ADDITION TO THE CITY OF MUSTANG, CANADIAN COUNTY, OKLAHOMA
A PART OF THE S.W. 1/4, SECTION 33, T11N, R5W, I.M.



PARK AREA



UNPLATTED

CURVE DATA

#	Δ	R	L	T
1.	3°05'48"	2774.69	149.26	75.00
2.	3°16'09"	3504.27	199.25	100.00
3.	17°48'04"	50.00	150.80	—
4.	41°24'35"	50.00	36.4	—
5.	47°40'35"	169.74	141.24	75.00
6.	47°30'14"	170.43	141.31	75.00
7.	7°26'07"	588.66	76.22	—
8.	19°16'57"	588.66	198.11	100.00 (Full Δ)