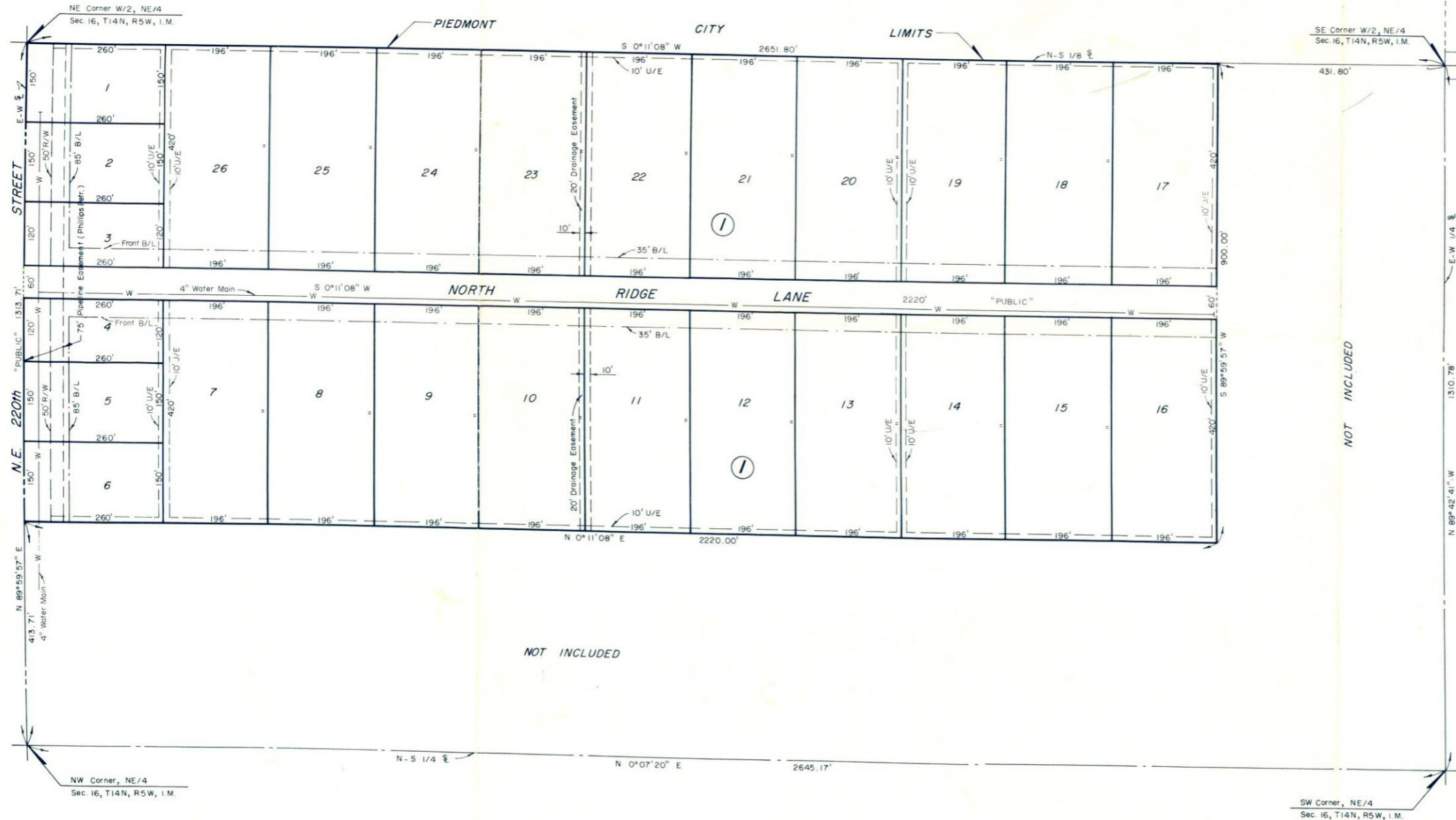


# NORTH RIDGE ESTATES

A SUBDIVISION OF A PART OF THE W/2 OF THE NE/4 OF SECTION 16, T14N, R5W, I.M.

PIEDMONT, CANADIAN COUNTY, OKLAHOMA

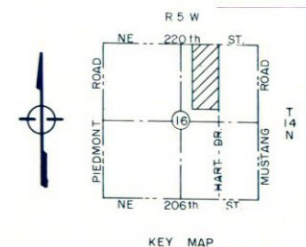
State of Oklahoma 88  
 Canadian County  
 Filed for record 03/25/84  
 at 3:05 PM and recorded in  
 Book 8 Page 177  
 Fee \$ 25.00  
 BETTY EBBENHOUR  
 County Clerk  
 M. May Rutherford Deputy



HART  
 ACRES

NOT INCLUDED

NOT INCLUDED



SHEET NO. 1 OF 2

This reproduction meets the requirements as outlined in Senate Bill 377, Section 518, as amended.

TRIANGLE/A & E, Inc.  
 BOX 308 OKLAHOMA CITY 73101

RESER SURVEYING COMPANY  
 LUTHER, OKLAHOMA  
 P.O. BOX 427 (405) 277-3646