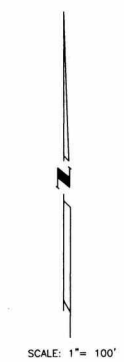
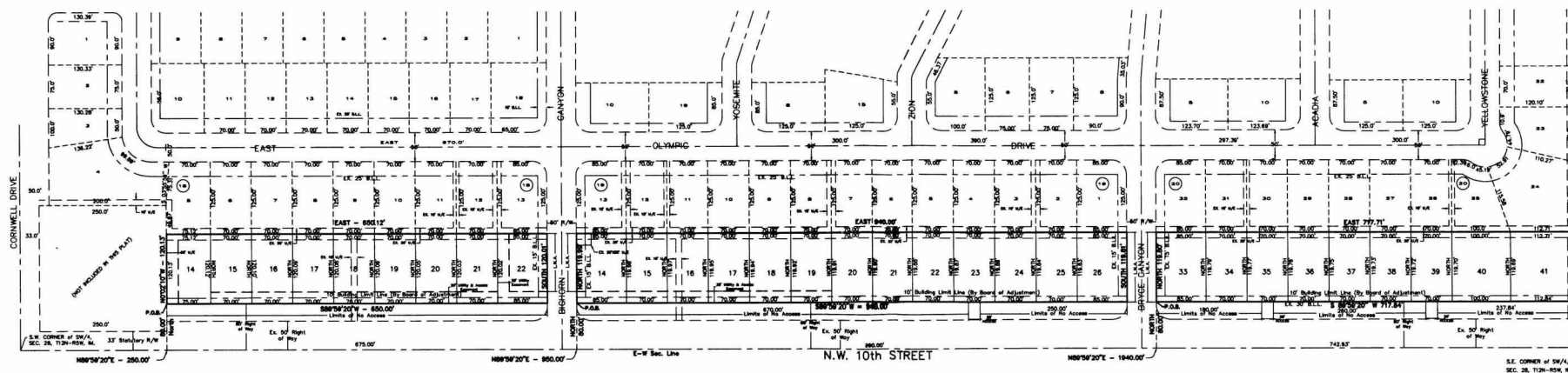


A RE-PLAT OF LOTS 14 THRU 21, BLOCK 18 & LOTS 14 THRU 24, BLOCK 19 & LOTS 33 THRU 40, BLOCK 20 IN THE PARKLAND HEIGHTS 2nd ADDITION

A PART OF THE SW/4, SEC. 28, T12N, R5W, I.M.
CITY OF YUKON, CANADIAN COUNTY, OKLAHOMA



LEGAL DESCRIPTION

Replat of Lots 14 thru 21, Block 18, in Parkland Heights 2nd Addition in the Southwest Quarter (SW/4) of Section Twenty-Eight (28), Township Twelve (12) North, Range Five (5) West of the Indian Meridian. Being more particularly described as follows:

Commencing at the Southwest Corner of the SW/4 of Section 28, T12N-R5W, I.M.; Thence N89°59'20"E along the South line of said SW/4 a distance of 250.00'; Thence North a distance of 80.00' to a point on the West line of previously platted Lot 14, Block 18, in Parkland Heights 2nd Addition and the POINT OF BEGINNING; Thence N0°02'10"W along the West line of previously platted Lot 14 a distance of 120.13' to the Northwest corner of previously platted Lot 14; Thence East along the North line of previously platted Lots 14 through 21, Block 18, in Parkland Heights 2nd Addition a distance of 650.12' to the Northeast corner of previously platted Lot 21; Thence South along the East line of previously platted Lot 21 a distance of 120.01'; Thence S 89°59'20" W and parallel with the South line of said SW/4 a distance of 650.00' to a point on the West line of previously platted Lot 14, Block 18, in Parkland Heights 2nd Addition and the POINT OF BEGINNING;

Containing 78054.7175 square feet or 1.7919 acres more or less.

Replat of Lots 14 thru 24, Block 19, in Parkland Heights 2nd Addition in the Southwest Quarter (SW/4) of Section Twenty-Eight (28), Township Twelve (12) North, Range Five (5) West of the Indian Meridian. Being more particularly described as follows:

Commencing at the Southwest Corner of the SW/4 of Section 28, T12N, R5W, I.M.; Thence N89°59'20"E along the South line of said SW/4 a distance of 950.00'; Thence North a distance of 80.00' to a point on the West line of previously platted Lot 14, Block 19, in Parkland Heights 2nd Addition and the POINT OF BEGINNING; Thence continuing North along the West line of previously platted Lot 14 a distance of 119.99' to the Northwest corner of previously platted Lot 14; Thence East along the North line of previously platted Lots 14 thru 24, Block 19, in Parkland Heights 2nd Addition a distance of 940.00' to the Northeast corner of previously platted Lot 24; Thence South along the East line of previously platted Lot 24 a distance of 119.81'; Thence S 89°59'20" W and parallel with the South line of said SW/4 a distance of 940.00' to a point on the West line of previously platted Lot 14, Block 19, in Parkland Heights 2nd Addition and the POINT OF BEGINNING;

Containing 112709.7628 square feet or 2.5875 acres more or less.

Replat of Lots 33 thru 40, Block 20, in Parkland Heights 2nd Addition in the Southwest Quarter (SW/4) of Section Twenty-Eight (28), Township Twelve (12) North, Range Five (5) West of the Indian Meridian. Being more particularly described as follows:

Commencing at the Southwest Corner of the SW/4 of Section 28, T12N, R5W, I.M.; Thence N89°59'20"E along the South line of said SW/4 a distance of 1940.00'; Thence North a distance of 80.00' to a point on the West line of previously platted Lot 33, Block 20, in Parkland Heights 2nd Addition and the POINT OF BEGINNING; Thence continuing North along the West line of previously platted Lot 33 a distance of 119.80' to the Northwest corner of previously platted Lot 33; Thence East along the North line of previously platted Lots 33 thru 40, Block 20, in Parkland Heights 2nd Addition a distance of 717.72' to the Northeast corner of previously platted Lot 40; Thence S0°03'44"E along the East line of previously platted Lot 40 a distance of 119.66'; Thence S 89°59'20" W and parallel with the South line of said SW/4 a distance of 717.84' to a point on the West line of previously platted Lot 33, Block 20, in Parkland Heights 2nd Addition and the POINT OF BEGINNING;

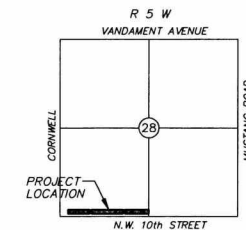
Containing 85942.1355 square feet or 1.9730 acres more or less.

NOTES:

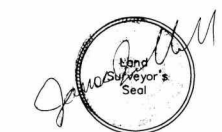
RE-PLATTED LOTS WILL BE USED FOR ACCESSORY BUILDINGS ONLY, NO LIVING QUARTERS, COMMERCIAL, INDUSTRIAL OR AGRICULTURAL ACTIVITIES SHALL BE PERMITTED ON THESE LOTS.

ACCESSORY BUILDINGS SHALL BE LIMITED TO ONE (1) STORY AND A MAXIMUM OF 1200 SQUARE FEET.

PARKING SHALL NOT BE PERMITTED ALONG N.W. 10th STREET RIGHT OF WAY.



LOCATION MAP
SCALE: 1"=2000'



R & J ASSOCIATES
SURVEYING & MAPPING
P.O. BOX 193
MUSTANG, OK 73064
(405) 378-4411
C.A. # 1905
Expires 6/30/03

W.R. Peacock, Inc.
P.O. Box 720797 - Oklahoma City, Ok. 73172
412 S. Mustang Road - Oklahoma City, Ok.
(405) 577-2000 • Fax (405) 577-2003
Certificate of Authorization Number: 2280
Expiration Date: June 30, 2003