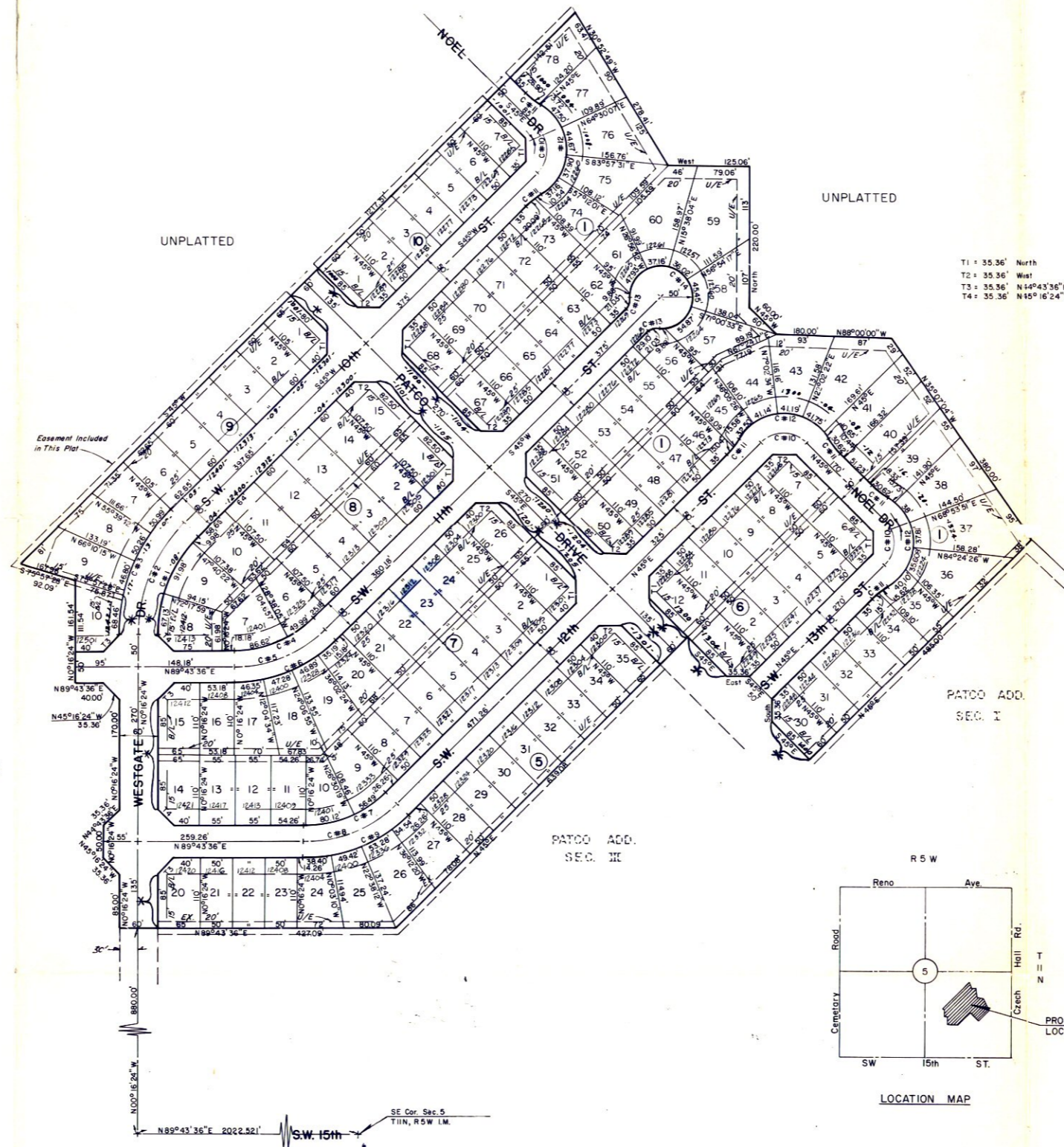


# PATCO VILLAGE SECTION IV

A PART OF THE SE/4, SEC. 5, T11N, R5W IM.  
OKLAHOMA CITY, CANADIAN COUNTY, OKLAHOMA



T1 : 35.36' North  
T2 : 35.36' West  
T3 : 35.36' N14°43'36\"E  
T4 : 35.36' N15°16'24\"W



CURVE DATA					
#	Δ	T	R	L	D
1	45°16'24"	89.2433'	214.0071	169.1017	26°46'22"
2	"	101.7536	244.0071	192.8068	23°28'52"
3	45°16'24"	114.2639	274.0071	216.5118	20°54'37"
4	44°43'36"	71.9988	175.0000	136.6098	32°44'26"
5	"	82.2844	200.0000	156.1255	28°38'52"
6	44°43'36"	92.5699	225.0000	175.6412	25°27'53"
7	"	71.9988	175.0000	136.6098	32°44'26"
8	"	82.2844	200.0000	156.1255	28°38'52"
9	44°43'36"	92.5699	225.0000	175.6412	25°27'53"
10	90°00'00"	50.0000	50.0000	78.5398	114°35'30"
11	14°02'10"	15.3880	125.0000	30.6220	45°50'12"
12	118°04'20"	135.2576	81.1550	167.2401	70°36'02"
13	48°11'20"	11.1800	25.0000	21.0264	229°10'59"
14	276°22'40"	—	50.0000	241.1850	114°35'30"

