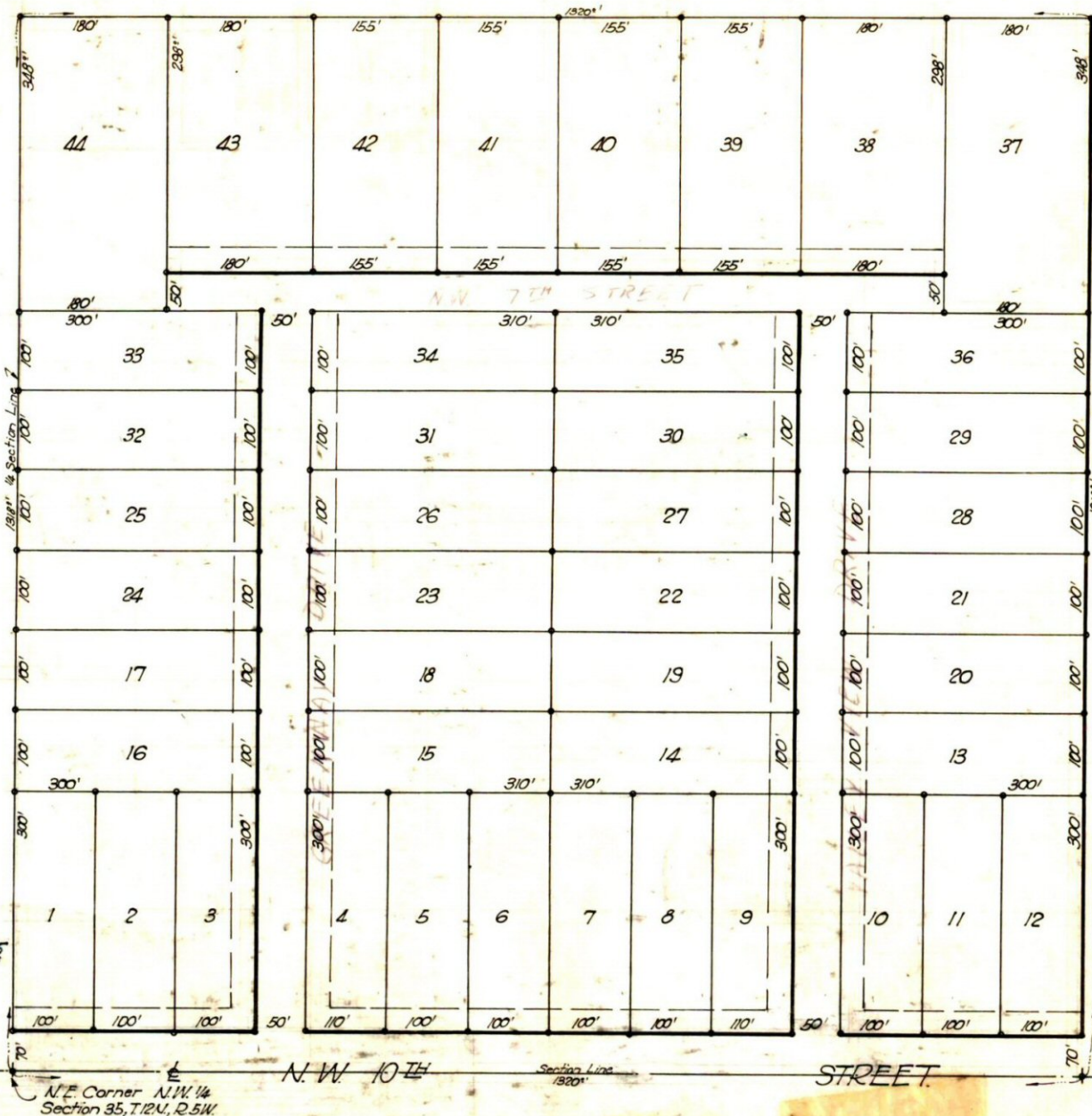


# PHILLIPS-LEAVITT N.W. 10<sup>TH</sup> STREET ADD.

BEING A SUBDIVISION OF THE N.E. 1/4, N.W. 1/4, SECTION 35, T. 12 N., R. 5 W.

CANADIAN COUNTY, OKLA.



Scale 1" = 100'  
Iron Pins Thus - °

STATE OF OKLAHOMA  
CANADIAN COUNTY CLERK  
Filed for record this 13<sup>th</sup> day of  
Nov, 1946 11:28 A.M.  
and recorded in Book 2-8 Page 64  
C. L. BRIDGES, COUNTY CLERK  
G. S. Russ

Fee \$5.25

N.E. Corner N.W. 1/4  
Section 35, T. 12 N., R. 5 W.

N.W. 10<sup>TH</sup> STREET

30' Section Line