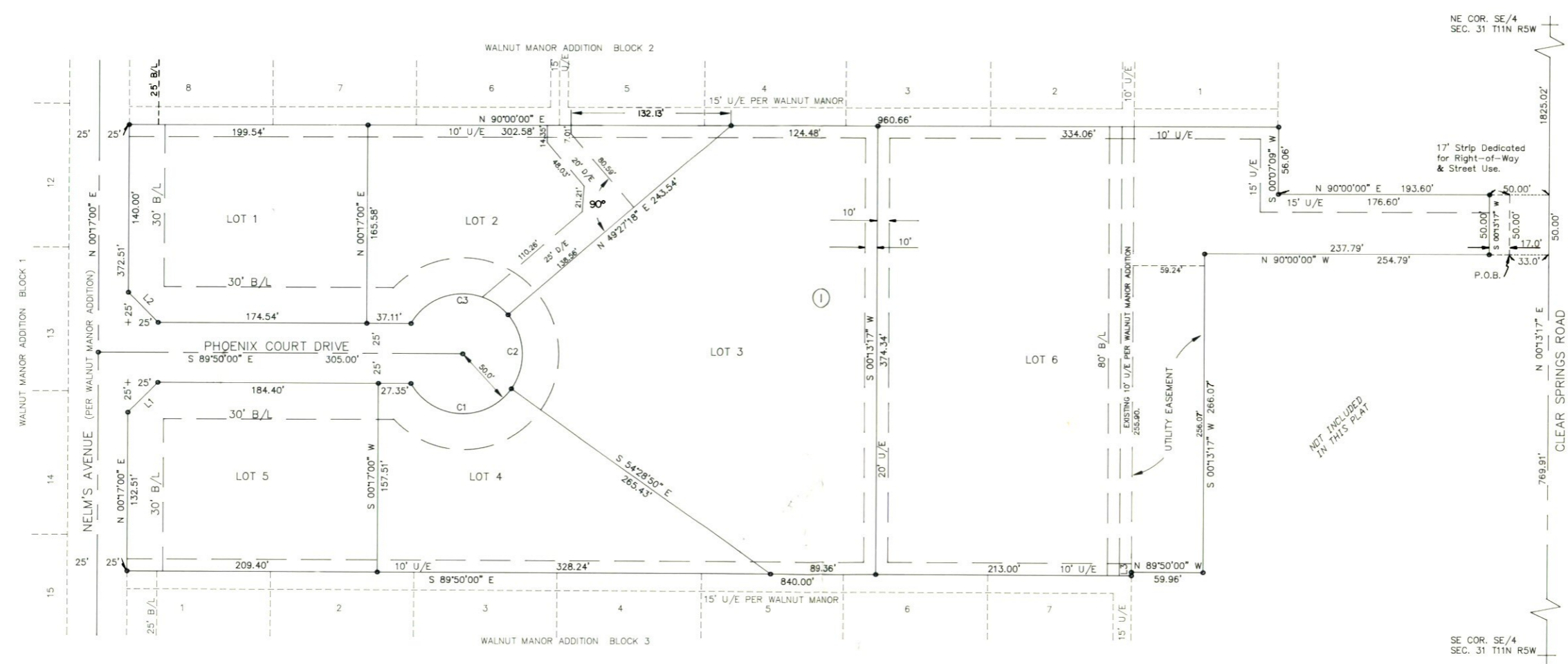


PHOENIX COURT ADDITION

AN ADDITION TO THE CITY OF MUSTANG
CANADIAN COUNTY, OKLAHOMA

CANADIAN COUNTY
FILED & RECORDED
1993 MAR 15 P. 112
MARK WISHOE
COUNTY CLERK
Book 8 Page 160



LEGAL DESCRIPTION:
A tract of land lying in the South Half (S/2) of the Southeast Quarter (SE/4) of Section Thirty-one (31), Township Eleven (11) North, Range Five (5) West of the Indian Meridian, Canadian County, Oklahoma, being more particularly described as follows:
Commencing at the Southeast corner of said SE/4; Thence N00°13'17"E, along the East line of said SE/4, a distance of 769.91 feet; Thence N90°00'00"W, a distance of 33.00 feet, to the point and place of beginning; Thence N90°00'00"W, a distance of 254.79 feet; Thence S00°13'17"W, a distance of 266.07 feet; Thence N89°50'00"W, a distance of 59.96 feet; Thence S00°17'00"W, a distance of 3.00 feet, to the Northeast corner of Block 3, Walnut Manor Addition, an addition to the City of Mustang, Canadian County, Oklahoma, according to the recorded plat thereof; Thence N89°50'00"W, along the North line of said Block 3, a distance of 840.00 feet, to the Northwest corner of said Block 3; Thence N00°17'00"E, a distance of 372.51 feet, to the Southwest corner of Block 2, Walnut Manor Addition; Thence N90°00'00"E, along the South line of said Block 2, a distance of 960.66 feet, to the Southeast corner of said Block 2; Thence S00°07'09"W, a distance of 56.06 feet; Thence N90°00'00"E, a distance of 193.60 feet; Thence S00°13'17"W, 33.00 feet from and parallel with the East line of the SE/4, a distance of 50.00 feet, to the point and place of beginning. Containing 8.0886 acres, more or less.



LINE	DIRECTION	DISTANCE	TANGENT	CHORD	BEARING	DELTA
L1	N 45°13'30" E	35.39'				
L2	N 44°46'30" W	35.32'				
L3	S 00°17'00" W	3.00'				
CURVE	RADIUS	LENGTH	TANGENT	CHORD	BEARING	DELTA
C1	50.00'	100.05'	77.95'	84.17'	S 87°09'25" E	114°38'50"
C2	50.00'	66.38'	39.11'	61.61'	N 02°30'46" W	76°03'52"
C3	50.00'	95.37'	70.47'	81.56'	S 84°48'39" W	109°17'18"

PREPARED BY:
CANADIAN COUNTY SURVEYING CO.
EL RENO, OKLAHOMA (405) 262-0249