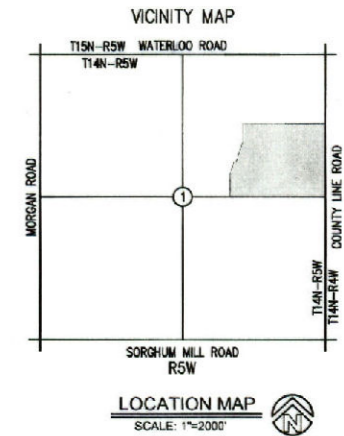


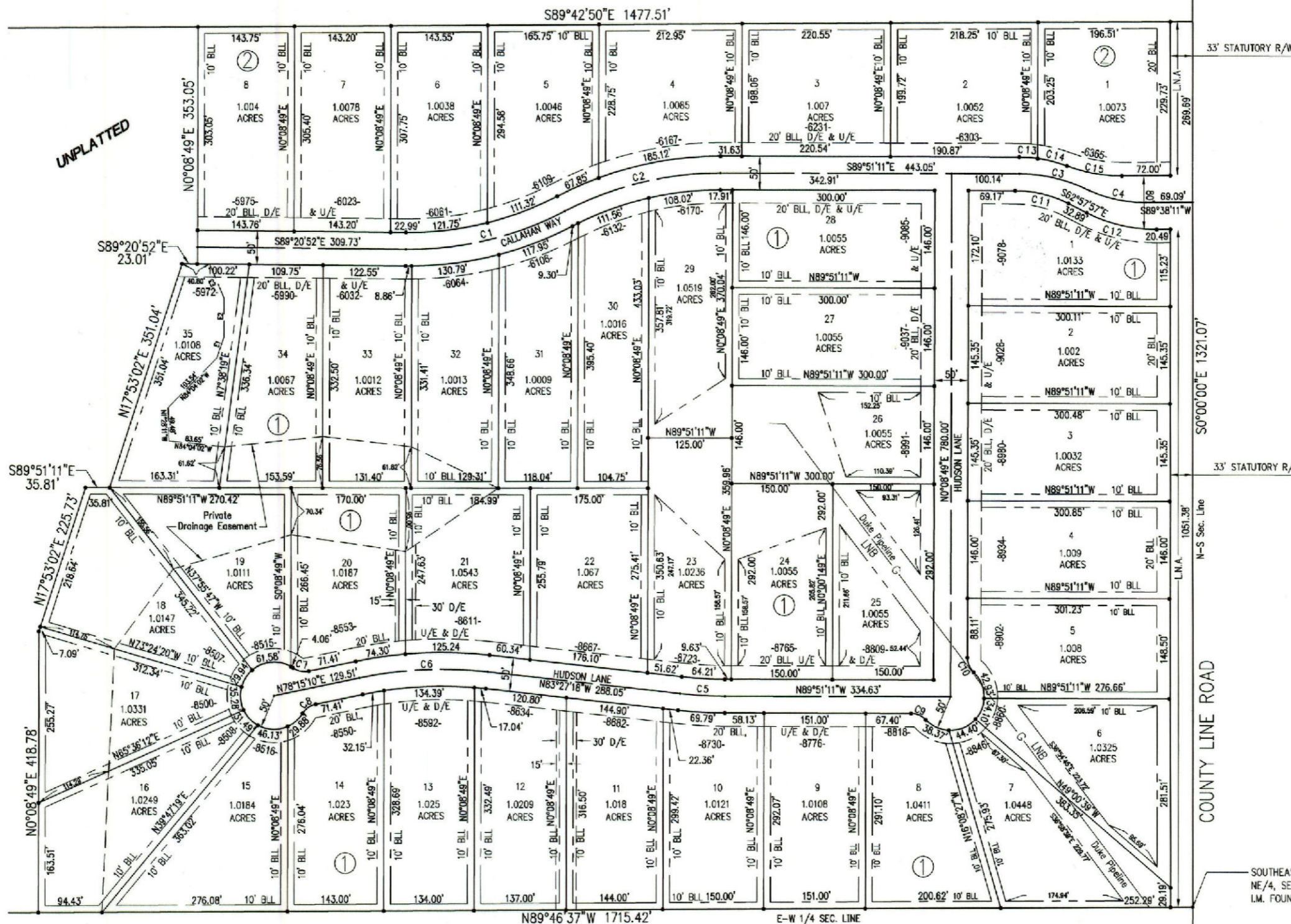
FINAL PLAT OF PIEDMONT MEADOWS PHASE I

A PART OF THE NE/4 OF SEC. 1,
T14N-R5W, I.M., CANADIAN COUNTY, OKLAHOMA

Doc# P 2006 11
Bk&Pg: PL 9 111-112
Filed: 03-08-2006
02:04:19 PM
Canadian County, OK



NORTHEAST CORNER
NE/4, SEC. 1, T14N-R5W,
I.M. FOUND RR SPIKE.



UNPLATTED

Basis of Bearing
EAST Line of NE/4
N0°00'00"E

SCALE: 1" = 60'

- LEGEND:**
- LNA = LIMITS OF NO ACCESS
 - U/E = UTILITY EASEMENT
 - BLL = BUILDING LIMIT LINE
 - D/E = DRAINAGE EASEMENT
 - P/E = PEDESTRIAN EASEMENT
 - C/A = COMMON AREA
 - A/E = ACCESS EASEMENT
 - = SET 3/8" IRON PIN
 - = FOUND IRON PIN

LEGAL DESCRIPTION

A tract of land lying in the Northeast Quarter of Section One (1), Township Fourteen (14) North, Range Five (5) West, Indian Meridian, Canadian County, Oklahoma, Being more particularly described as follows:

COMMENCING at the Northeast Corner of said NE/4; THENCE S0°00'00"E along the East line of said NE/4 a distance of 1448.55 feet to the Northeast corner of the S/2-NE/4 and the POINT OF BEGINNING; THENCE continuing S0°00'00"E along the East line of said NE/4 a distance of 1321.07 feet to the Southeast corner of said NE/4; THENCE N89°46'37"W along the South line of said NE/4 a distance of 1715.42 feet; THENCE N0°08'49"E a distance of 418.78 feet; THENCE N17°53'02"E a distance of 225.73 feet; THENCE S89°51'11"E a distance of 35.81 feet; THENCE N17°53'02"E a distance of 351.04 feet; THENCE N0°08'49"E a distance of 353.05 feet to a point on the North line of said S/2-NE/4; THENCE S89°42'50"E along the North line of said S/2-NE/4 a distance of 1477.51 feet to the Northeast corner of said S/2-NE/4 and the POINT OF BEGINNING; containing 48.66 acres, more or less.

CURVE TABLE (CENTERLINE)

CURVE	RADIUS	LENGTH	TANGENT	CHORD DIRECTION	CHORD LENGTH
C1	500.00	245.34	125.19	N 76°35'44" E	242.86
C2	500.00	240.92	122.85	N 76°20'35" E	238.60
C3	234.79	108.76	55.11	N 76°38'39" W	107.30
C4	200.00	86.52	43.95	N 77°58'12" W	85.85
C5	600.00	67.00	33.54	S 86°39'14" E	66.97
C6	600.00	191.55	96.60	S 87°23'55" W	190.74

CURVE TABLE (LOTS)

CURVE	RADIUS	LENGTH	TANGENT	CHORD DIRECTION	CHORD LENGTH
C7	30.00	24.38	12.91	N 78°27'48" W	23.72
C8	30.00	24.38	12.91	N 54°58'09" E	23.72
C9	30.00	24.38	12.91	N 66°34'10" W	23.72
C10	30.00	24.38	12.91	N 23°08'12" W	23.72
C11	175.00	82.12	41.83	S 78°24'24" E	81.37
C12	225.00	107.59	54.84	N 78°39'53" W	106.57
C13	200.00	77.49	38.77	N 85°54'53" W	77.47
C14	200.00	44.88	22.53	N 75°32'52" W	44.79
C15	225.00	83.43	42.20	S 79°44'29" E	82.95

EASEMENT TABLE

EASEMENT	BEARING	DISTANCE
E1	N 18°51'18" E	33.42'
E2	N 3°02'58" E	57.75'
E3	N 23°00'44" W	56.03'



Crafton, Tull & Associates, Inc.
235 N. MacArthur Suite 200 Oklahoma City, OK 73127
405.787.6270 Fax: 405.787.6276 www.craftontull.com
CA 973 (PE/L/S) EXPIRES 6/30/2005

Engineers & Surveyors

DRAWN: TLB	DATE: 02/23/06	CHECKED:	SHEET NO.: 2-2
			PROJECT NO.: 056037-00