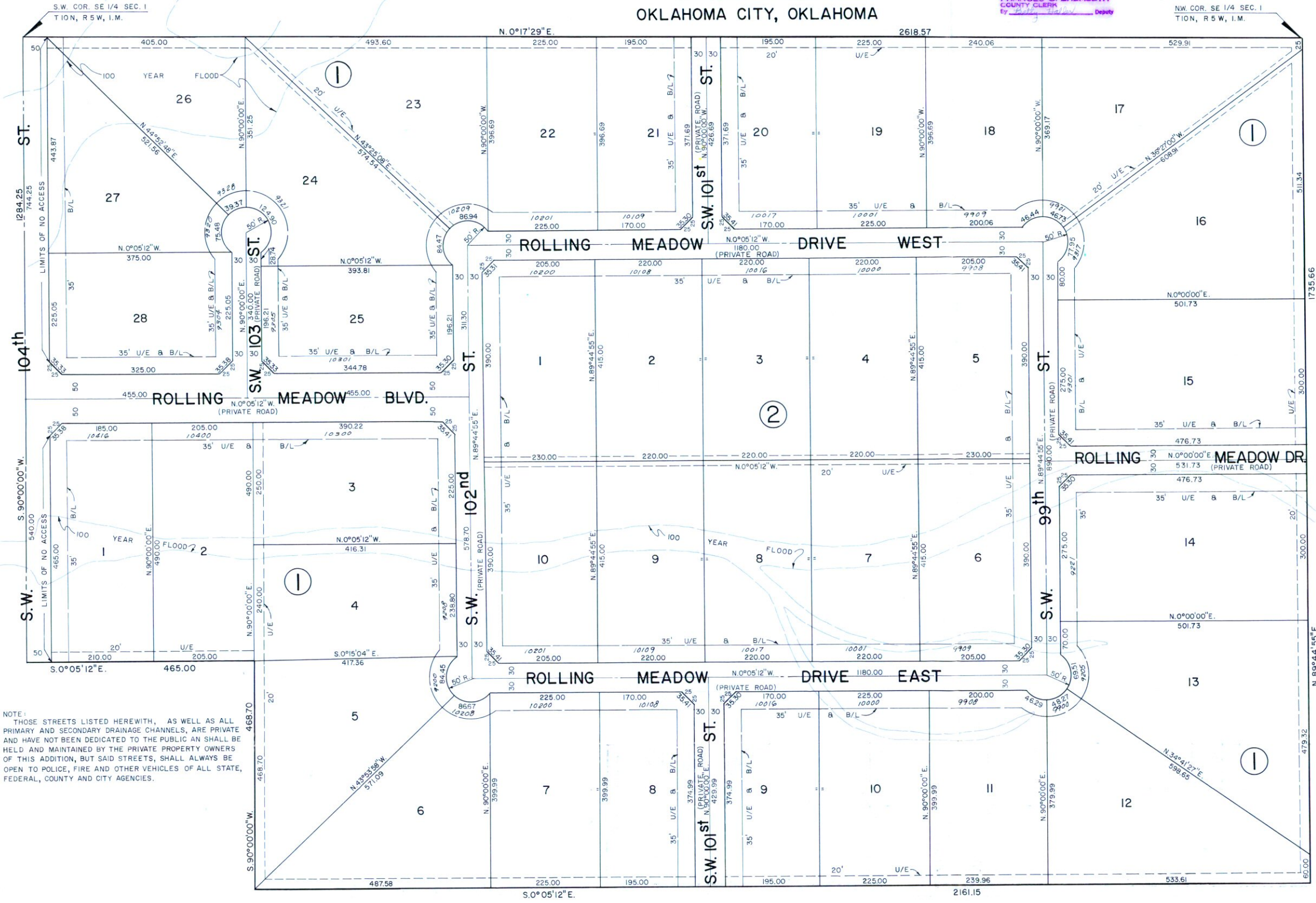


ROLLING MEADOWS

A SUBDIVISION OF A PART OF THE S.E. 1/4 SEC. 1,
T 10 N, R 5 W, I.M.
CANADIAN COUNTY
OKLAHOMA CITY, OKLAHOMA

State of Oklahoma } SS
Canadian County }
Filed for record *March 26, 1973*
at *3:10 P.M.* and recorded in
Book *Page 31*
Fee \$*2.00*
FRANCES C. BREMSETH
COUNTY CLERK
By *Deputy*

N.W. COR. SE 1/4 SEC. 1
TION, R 5 W, I.M.



NOTE:
THOSE STREETS LISTED HEREWITH, AS WELL AS ALL
PRIMARY AND SECONDARY DRAINAGE CHANNELS, ARE PRIVATE
AND HAVE NOT BEEN DEDICATED TO THE PUBLIC AN SHALL BE
HELD AND MAINTAINED BY THE PRIVATE PROPERTY OWNERS
OF THIS ADDITION, BUT SAID STREETS, SHALL ALWAYS BE
OPEN TO POLICE, FIRE AND OTHER VEHICLES OF ALL STATE,
FEDERAL, COUNTY AND CITY AGENCIES.



SCALE: 1" = 100'

MAPCO
ENGINEERING CORPORATION
5400 S. Shields Blvd. Ph. 632-7761
OKLAHOMA CITY, OKLA. 73129