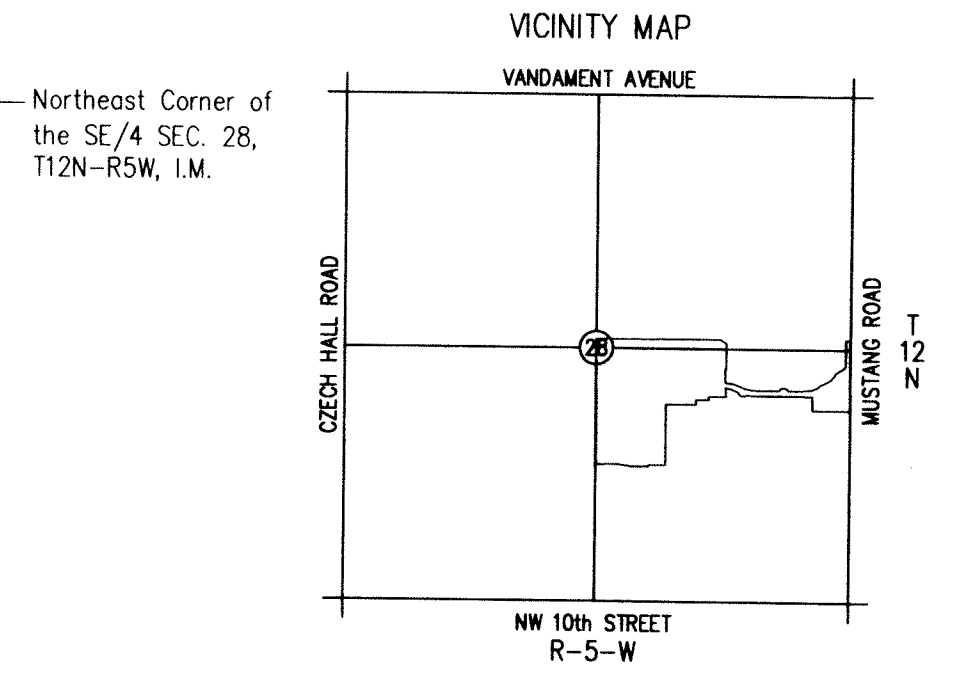


FINAL PLAT OF STONE MILL ADDITION PHASE I

PARTS OF THE NE/4 AND SE/4 OF SEC. 28, T12N, R5W, I.M., CITY OF YUKON, CANADIAN COUNTY, OKLAHOMA

STATE OF OKLAHOMA)
 CANADIAN COUNTY) SS
 Filed for record at 11:48 AM and recorded in Book 9, Page 16
 Fee \$45.00
 Phyllis Blair County Clerk
 By *Cindy Barnett* Deputy
 2004010595



LOCATION MAP SCALE: 1"=200'

Basis of Bearing East Line of NE/4 S00°00'12"W

SCALE: 1" = 100'

OWNER'S CERTIFICATE AND DEDICATION

KNOW ALL MEN BY THESE PRESENTS That I, John Nail, Manager of **TRINITY DEVELOPMENT, L.L.C.** certifies that they are the owner of all the land included in the annexed plat and that the plat of "STONE MILL ADDITION PHASE I" represents a survey of the rights-of-way and easements shown on the annexed plat for the installation and maintenance of the public streets and utilities; that we hereby guarantee a clear title to all lands so dedicated from ourselves, our heirs and assigns forever and have caused the same to be released from all encumbrances so that the title is clear, except as shown in the Abstractor's Certificate. Covenants, restrictions, and reservations for the addition are contained on a separate instrument and will be filed subsequently.

Witnessed by my hand(s) this 2 day of April, 2004.
 STATE OF OKLAHOMA)
 COUNTY OF) SS
 John Nail, Manager

CITY PLANNING COMMISSION APPROVAL

I, *PK Dumas*, Chairman of the City of Yukon Planning Commission certify that the Commission duly approved this plat on the 9th day of February, 2004.

CERTIFICATE OF CITY CLERK

I, *Leona G. Haggis*, City Clerk of the City of Yukon, Oklahoma, hereby certify that I have examined the records of said City and find that all deferred payments on unamortized installments upon special assessment have been paid in full and that there are no special assessments procedures now pending against the land shown on the Final Plat of STONE MILL ADDITION PHASE I, to the City of Yukon, Oklahoma.

Signed by the City Clerk this 12 day of April, 2004.
 Leona G. Haggis, City Clerk

BONDED ABSTRACTOR'S CERTIFICATE

The undersigned, duly qualified abstractor in and for the said County and State, hereby certifies that according to the records of said County, title to the land included in the annexed plat of "STONE MILL ADDITION PHASE I" to the City of Yukon, Canadian County, Oklahoma, appears to be vested in **TRINITY DEVELOPMENT, L.L.C.**, and that on the 12 day of April, 2004, all lands described are referred to are unencumbered by pending actions, judgments, liens, mortgages, taxes or other encumbrances, except mortgages of record, that there are no outstanding tax sales certificates against said land and no tax deeds are issued to any person. EXECUTED at Edmond, Canadian County, Oklahoma, on this 08 day of April, 2004.

Donna R. Strubel
 American Guaranty & Title Canadian Valley Abstractor
 Donna R. Strubel

CERTIFICATE OF COUNTY TREASURER

David J. Babin do hereby certify that I am duly elected, qualified and acting County Treasurer of Canadian County, State of Oklahoma, that the tax records of said County show all taxes are paid for the year 2003 and prior years on the land shown on the annexed plat of STONE MILL ADDITION PHASE I, an addition to the City of Yukon in Canadian County, State of Oklahoma, and that the required statutory security has been deposited in the office of the County Treasurer, guaranteeing payment of the current year's taxes. IN WITNESS WHEREOF said County Treasurer has caused this instrument to be executed at in Canadian County, State of Oklahoma, this 20 day of April, 2004.

David J. Babin
 County Treasurer - in and for Canadian County

ACCEPTANCE OF DEDICATION BY COUNTY

BE IT HEREBY RESOLVED by the City Council of the City of Yukon, Oklahoma, that the dedications shown on the annexed plat of "STONE MILL ADDITION PHASE I" are hereby Approved by the Council of the City of Oklahoma City, Oklahoma, this 17 day of April, 2004.

accepted. CITY OF OKLAHOMA CITY, OKLAHOMA
 Attest: City Clerk - *Phyllis Blair* Mayor
 Notary Public

SURVEYOR'S CERTIFICATE

I, James J. Reddin, Registered Professional Land Surveyor No. 1510 in the State of Oklahoma, do hereby certify that this plat of STONE MILL ADDITION PHASE I, an addition to the City of Yukon, Canadian County, Oklahoma, represents a careful survey made under my supervision, and that this survey meets the Oklahoma Minimum Standards for the Practice of Land Surveying as adopted by the Oklahoma State Board of Registration for Professional Engineers and Land Surveyors; and that said Final Plat complies with the requirements of Title 11, Section 41-108 of the Oklahoma State Statutes.

James J. Reddin
 James J. Reddin, RPLS #1510

STATE OF OKLAHOMA) COUNTY OF) SS

Before me, the undersigned, a Notary Public in and for said County and State, on this 8 day of April, 2004, personally appeared James J. Reddin to me known to be the identical person who executed the within and foregoing instrument executed the same as his free and voluntary act and deed for the uses and purposes therein set forth.

WITNESS my hand and notarial seal the day and year last above written.
 Notary Public
 My Commission Number is, 1305138
 My Commission Expires the 22 day of March, 2007

LEGAL DESCRIPTION

A tract of land lying in parts of the Northeast Quarter (NE/4) and Southeast Quarter (SE/4) of Section Twenty-Eight (28), Township Twelve (12) North, Range Five (5) West of the Indian Meridian, (I.M.). Being more particularly described as follows:

COMMENCING at the Southeast Corner of the SE/4 of Said Section 28; THENCE N0°00'12"E a distance of 2193.20' TO THE POINT OF BEGINNING; THENCE S89°55'46"W a distance of 50.00'; THENCE N0°00'12"E a distance of 71.93'; THENCE N45°02'01"W a distance of 35.33'; THENCE S89°55'46"W a distance of 31.29'; THENCE S68°28'19"W a distance of 76.50'; THENCE on a curve to the right with a Chord Bearing of S71°36'49"W, a Chord length of 16.99', a radius of 155.00 feet, a distance of 17.00'; THENCE on a curve to the left with a Chord Bearing of S68°43'45"W, a Chord length of 19.95', a radius of 95.00 feet, a distance of 19.98'; THENCE on a curve to the right with a Chord Bearing of S82°14'31"W, a Chord length of 103.68', a radius of 155.00 feet, a distance of 105.72'; THENCE on a curve to the left with a Chord Bearing of S76°00'09"W, a Chord length of 104.37', a radius of 120.00 feet, a distance of 107.98'; THENCE S50°13'26"W a distance of 12.37'; THENCE on a curve to the right with a Chord Bearing of S54°33'30"W, a Chord length of 27.21', a radius of 180.00 feet, a distance of 27.23'; THENCE S58°53'34"W a distance of 90.05'; THENCE on a curve to the right with a Chord Bearing of S74°24'40"W, a Chord length of 96.32', a radius of 180.00 feet, a distance of 97.50'; THENCE S89°55'46"W a distance of 21.13'; THENCE on a curve to the right with a Chord Bearing of N70°17'33"W, a Chord length of 87.98', a radius of 130.00 feet, a distance of 89.75'; THENCE on a curve to the left with a Chord Bearing of N70°17'33"W, a Chord length of 64.29', a radius of 95.00 feet, a distance of 65.59'; THENCE S89°55'46"W a distance of 38.44'; THENCE on a curve to the left with a Chord Bearing of S79°56'51"W, a Chord length of 32.93', a radius of 95.00 feet, a distance of 33.10'; THENCE on a curve to the right with a Chord Bearing of S79°56'51"W, a Chord length of 62.40', a radius of 180.00 feet, a distance of 62.72'; THENCE S89°55'46"W a distance of 56.90'; THENCE on a curve to the right with a Chord Bearing of N84°08'14"W, a Chord length of 109.57', a distance of 109.77'; THENCE S60°10'09"W a distance of 36.62'; THENCE N72°47'42"W a distance of 50.01'; THENCE N25°50'26"W a distance of 36.68'; THENCE on a curve to the right with a Chord Bearing of N66°28'36"W, a Chord length of 16.66', a radius of 53.00 feet, a distance of 16.66'; THENCE on a curve to the left with a Chord Bearing of N72°47'42"W, a Chord length of 119.08', a radius of 470.00 feet, a distance of 119.39'; THENCE S01°26'36"E a distance of 95.12'; THENCE S00°31'26"E a distance of 150.00'; THENCE S01°28'58"E a distance of 32.99'; THENCE S89°55'46"W a distance of 130.04'; THENCE S01°28'58"E a distance of 50.02'; THENCE S89°55'46"W a distance of 313.66'; THENCE S00°31'26"E a distance of 635.00'; THENCE S89°55'46"W a distance of 180.00'; THENCE S00°31'26"E a distance of 15.00'; THENCE S28°55'34"W a distance of 165.00'; THENCE N81°11'22"W a distance of 161.93'; THENCE N89°55'46"W a distance of 226.21' to a point on the West line of said SE/4; THENCE N00°03'12"W along West line of said SE/4 a distance of 1210.00' to the Northwest Corner of said SE/4; THENCE continuing N00°03'12"W along the West line of said NE/4 a distance of 100.00'; THENCE N89°55'46"W a distance of 1287.00'; THENCE S57°15'09"E a distance of 80.93'; THENCE S00°31'26"E a distance of 56.14' to a point on the North line of said SE/4; THENCE continuing S00°31'26"E a distance of 210.00'; THENCE S89°45'52"W a distance of 10.00'; THENCE S00°31'26"E a distance of 135.39'; THENCE on a curve to the right with a Chord Bearing of S73°43'19"E, a Chord length of 150.20', a radius of 470.00 feet, a distance of 200.93'; THENCE N89°55'46"W a distance of 41.81'; THENCE on a curve to the right with a Chord Bearing of S77°49'24"E, a Chord length of 199.40', a radius of 470.00 feet, a distance of 150.70'; THENCE on a curve to the left with a Chord Bearing of S79°56'51"E, a Chord length of 41.60', a radius of 120.00 feet, a distance of 56.90'; THENCE on a curve to the left with a Chord Bearing of N79°56'51"E, a Chord length of 53.73', a radius of 155.00 feet, a distance of 54.01'; THENCE N89°55'46"W a distance of 38.44'; THENCE on a curve to the right with a Chord Bearing of S85°07'05"E, a Chord length of 26.76', a radius of 155.00 feet, a distance of 26.80'; THENCE N51°38'53"E a distance of 31.86'; THENCE N89°56'48"E a distance of 50.00'; THENCE S00°31'26"E a distance of 14.72'; THENCE on a curve to the right with a Chord Bearing of S01°59'45"W, a Chord length of 8.94', a radius of 125.00 feet, a distance of 8.94'; THENCE S22°37'24"E a distance of 44.01'; THENCE on a curve to the left with a Chord Bearing of S79°34'44"E, a Chord length of 25.49', a radius of 70.00 feet, a distance of 25.64'; THENCE N89°55'46"W a distance of 21.13'; THENCE on a curve to the left with a Chord Bearing of N72°44'40"E, a Chord length of 64.21', a radius of 120.00 feet, a distance of 65.00'; THENCE N58°53'34"E a distance of 90.05'; THENCE on a curve to the left with a Chord Bearing of N54°33'30"E, a Chord length of 18.14', a radius of 120.00 feet, a distance of 18.16'; THENCE S01°32'26"E a distance of 12.37'; THENCE on a curve to the right with a Chord Bearing of N76°00'09"E, a Chord length of 156.56', a radius of 180.00 feet, a distance of 161.97'; THENCE on a curve to the left with a Chord Bearing of N82°14'31"E, a Chord length of 63.55', a radius of 95.00 feet, a distance of 64.79'; THENCE on a curve to the right with a Chord Bearing of N66°55'30"E, a Chord length of 22.82', a radius of 155.00 feet, a distance of 22.84'; THENCE on a curve to the left with a Chord Bearing of N57°12'03"E, a Chord length of 45.79', a radius of 95.00 feet, a distance of 46.25'; THENCE N43°15'15"E a distance of 55.20'; THENCE on a curve to the right with a Chord Bearing of N59°40'51"E, a Chord length of 78.05', a radius of 138.00 feet, a distance of 79.13'; THENCE N40°55'42"E a distance of 38.16'; THENCE N00°00'12"E a distance of 62.11'; THENCE N89°55'46"E a distance of 50.00'; THENCE S00°00'12"W a distance of 313.80' TO THE POINT OF BEGINNING.

CONTAINING APPROXIMATELY 1474568.17 SQ. FT. OR 33.85 ACRES, MORE OR LESS.

CURVE TABLE (LEGAL DESCRIPTION)

NUMBER	RADIUS	LENGTH	CHORD BEARING	CHORD LENGTH
C1	155.00	17.00	S 71°36'49" W	18.89
C2	95.00	19.95	S 68°43'45" W	18.85
C3	155.00	105.72	S 82°14'31" W	103.88
C4	120.00	107.98	S 76°00'09" W	109.37
C5	180.00	27.23	S 54°33'30" W	27.21
C6	180.00	97.50	S 74°24'40" W	96.32
C7	130.00	87.98	N 70°17'33" W	87.88
C8	95.00	64.29	N 70°17'33" W	64.29
C9	95.00	32.93	N 79°56'51" W	32.93
C10	180.00	62.72	S 79°56'51" W	62.40
C11	300.00	109.77	N 84°08'14" W	109.57
C12	530.00	14.72	S 01°26'36" E	14.86
C13	470.00	119.39	N 72°47'42" W	118.08
C14	530.00	106.70	S 74°24'40" W	106.32
C15	470.00	200.93	S 76°00'09" W	199.40
C16	120.00	41.81	N 79°56'51" W	41.80
C17	155.00	54.01	N 79°56'51" W	53.73
C18	155.00	26.80	S 85°07'05" W	26.76
C19	125.00	8.94	S 01°26'36" E	8.94
C20	70.00	25.64	S 72°44'40" W	25.49
C21	100.00	65.00	N 72°44'40" W	64.21
C22	138.00	18.16	N 57°12'03" W	18.14
C23	180.00	161.97	N 76°00'09" W	156.56
C24	155.00	64.79	N 66°55'30" E	63.55
C25	155.00	22.84	N 66°55'30" E	22.82
C26	95.00	46.25	N 57°12'03" W	45.79
C27	138.00	78.05	N 59°40'51" W	78.05
C28	150.00	50.00	N 40°55'42" W	50.00

CURVE TABLE (CENTERLINE)

NUMBER	RADIUS	LENGTH	CHORD BEARING	CHORD LENGTH
C1	125.00	196.31	N 44°56'17" E	176.75
C2	300.00	63.82	S 82°58'51" E	63.54
C3	300.00	63.82	S 82°58'51" E	63.54
C4	1000.00	24.85	S 89°46'36" E	24.65
C5	500.00	253.78	S 77°42'41" E	248.50
C6	500.00	63.01	S 89°11'06" E	62.96
C7	300.00	125.75	S 81°50'44" E	126.16
C8	125.00	43.55	N 79°56'51" E	43.33
C9	125.00	66.37	N 79°56'51" E	66.00
C10	125.00	19.82	S 50°58'26" E	19.80
C11	100.00	88.04	S 70°17'33" E	87.68
C12	150.00	85.25	N 72°44'40" E	84.78
C13	150.00	22.89	N 54°33'30" E	22.87
C14	150.00	134.88	N 74°24'40" E	134.47
C15	125.00	65.28	N 87°14'31" E	63.61
C16	125.00	28.80	N 87°14'31" E	28.50
C17	125.00	45.34	N 42°03'12" E	45.10
C18	118.80	74.27	N 72°01'11" E	73.06
C19	150.00	52.27	N 49°55'11" E	51.67

LINE TABLE (LEGAL DESCRIPTION)

NUMBER	BEARING	DISTANCE
L1	N 45°07'01" W	35.37
L2	S 89°55'46" W	31.29
L3	N 50°13'26" W	12.37
L4	N 89°55'46" W	38.44
L5	N 80°07'06" W	36.62
L6	N 72°47'42" W	30.00
L7	N 79°56'51" W	32.93
L8	N 79°56'51" W	56.90
L9	N 79°56'51" W	53.73
L10	N 80°03'12" W	15.00
L11	S 89°55'46" W	10.00
L12	S 89°55'46" W	12.37
L13	N 51°38'53" W	31.86
L14	N 89°55'46" W	50.00
L15	N 72°44'40" W	25.49
L16	S 22°37'24" E	44.01
L17	N 89°55'46" W	21.13
L18	N 72°44'40" W	31.27
L19	S 01°26'36" E	38.16

LINE TABLE (LOTS)

NUMBER	BEARING	DISTANCE
L1	N 45°07'01" E	35.36
L2	S 49°53'43" E	35.36
L3	N 49°53'17" E	35.36
L4	N 17°12'03" E	34.44
L5	S 00°03'12" E	14.72
L6	S 89°55'46" W	21.13
L7	S 89°55'46" W	12.37
L8	N 45°06'17" E	35.35
L9	S 01°26'36" E	35.35
L10	N 42°58'46" E	35.35
L11	N 01°28'56" W	22.85
L12	N 49°53'17" E	35.35
L13	S 49°53'43" E	35.35
L14	S 89°55'46" W	15.75
L15	S 89°55'46" W	15.64

CURVE TABLE (LOTS)

NUMBER	RADIUS	LENGTH	CHORD BEARING	CHORD LENGTH
C1	25.00	21.60	S 83°03'05" E	20.41
C2	25.00	18.16	S 83°03'05" E	17.14
C3	25.00	21.63	N 83°03'04" E	20.41
C4	25.00	18.16	N 83°03'04" E	17.14
C5	25.00	14.84	N 83°03'04" E	14.72
C6	25.00	18.69	S 89°39'12" E	18.26
C7	25.00	21.60	N 83°03'04" E	20.38
C8	25.00	12.77	S 56°18'24" W	12.83
C9	25.00	18.29	N 80°25'58" E	8.25

NOTE:
 MAINTENANCE OF THE COMMON AREAS SHALL BE THE RESPONSIBILITY OF THE PROPERTY OWNERS ASSOCIATION.
 SIDEWALKS SHALL BE CONSTRUCTED ALONG ALL INTERIOR STREETS AT THE BUILDING PERMIT STAGE WITH INSTALLATION PRIOR TO THE ISSUANCE OF A CERTIFICATE OF OCCUPANCY.
 CLASS C OR BETTER ROOFING MATERIALS REQUIRED.
 LNA = LIMITS OF NO ACCESS
 U/E = UTILITY EASEMENT
 D/E = DRAINAGE EASEMENT
 P/E = PEDESTRIAN EASEMENT
 (NR) = NON RADIAL
 (CA) = COMMON AREA

Crafton, Tull & Associates, Inc.
 235 N. MacArthur Suite 450 Oklahoma City, OK 73127
 405.787.6270 Fax: 405.787.6276 www.crafton.com
 CA 973 (PE/LS) EXPIRES 6/30/2005
Engineers & Surveyors