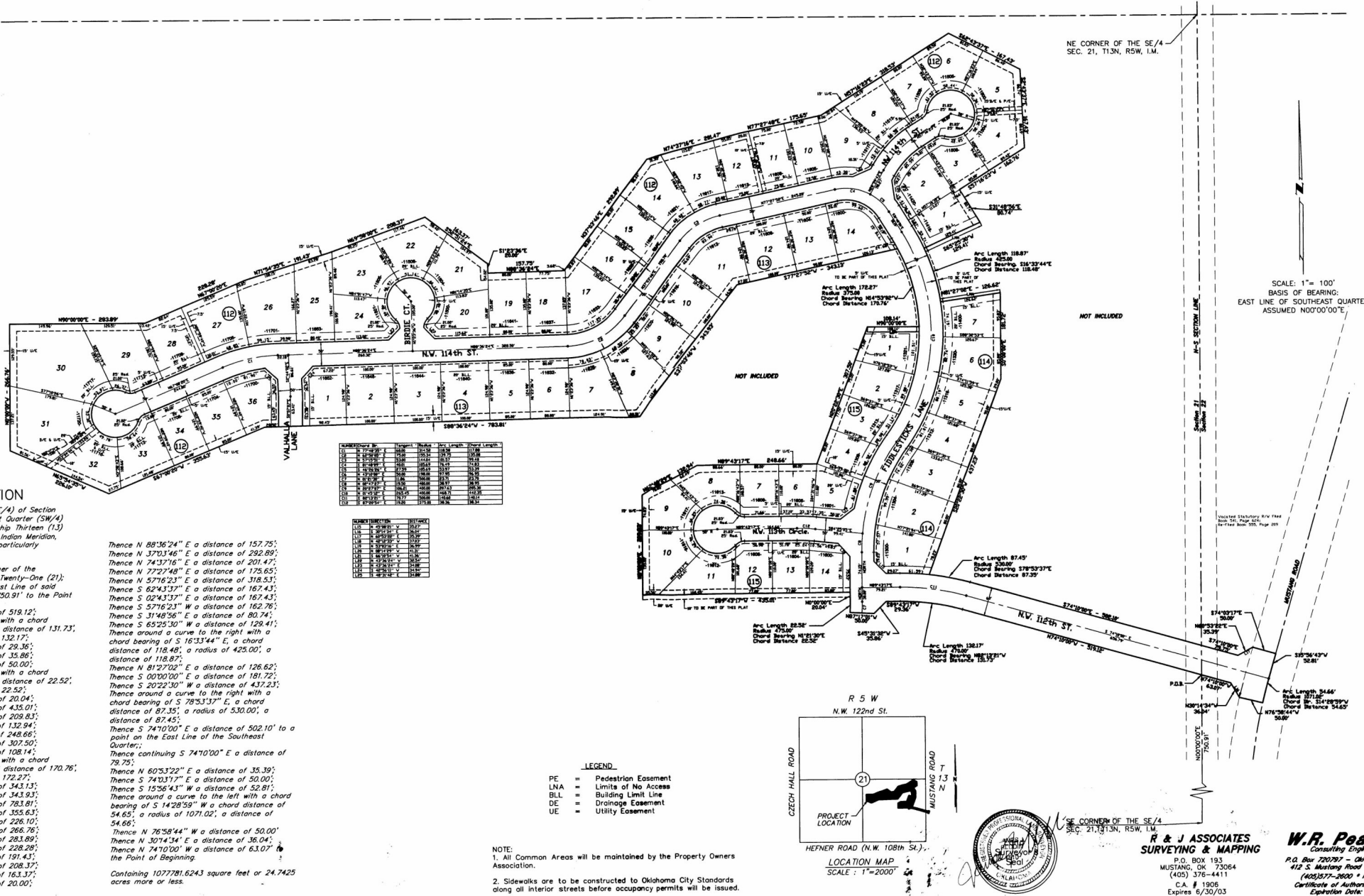


# FINAL PLAT OF SURREY HILLS ADDITION No. 13

Parts of the SE/4 of Section 21 and the SW/4 of Section 22  
T13N, R5W, I.M. Canadian County, Oklahoma



STATE OF OKLAHOMA  
 OFFICE OF THE  
 COUNTY CLERK  
 CANADIAN COUNTY  
 Doc # 2002018407



### LEGAL DESCRIPTION

Parts of the Southeast Quarter (SE/4) of Section Twenty-one (21) and the Southwest Quarter (SW/4) of Section Twenty-two (22), Township Thirteen (13) North, Range Five (5) West of the Indian Meridian, Canadian County, Oklahoma, more particularly described as follows:

Commencing at the Southeast Corner of the Southeast Quarter of said Section Twenty-one (21);  
 Thence N 00°00'00" E along the East Line of said Southeast Quarter, a distance of 750.91' to the Point of Beginning;  
 Thence N 74°10'00" W a distance of 519.12';  
 Thence around a curve to the left with a chord bearing of N 82°13'21" W, a chord distance of 131.73';  
 Thence S 89°43'17" W a distance of 29.36';  
 Thence S 43°31'12" W a distance of 35.86';  
 Thence N 87°17'01" W a distance of 50.00';  
 Thence around a curve to the left with a chord bearing of N 01°21'30" E, a chord distance of 22.52';  
 Thence S 89°43'17" W a distance of 20.04';  
 Thence S 89°43'17" W a distance of 435.01';  
 Thence N 00°00'00" E a distance of 209.83';  
 Thence N 62°48'29" E a distance of 132.94';  
 Thence N 89°43'17" E a distance of 248.66';  
 Thence N 202°2'30" E a distance of 307.50';  
 Thence N 90°00'00" E a distance of 108.14';  
 Thence around a curve to the left with a chord bearing of N 14°53'02" W, a chord distance of 170.76';  
 Thence S 77°27'52" W a distance of 172.27';  
 Thence S 77°27'52" W a distance of 343.13';  
 Thence S 37°03'46" W a distance of 343.93';  
 Thence S 89°36'24" W a distance of 783.81';  
 Thence S 67°00'20" W a distance of 355.63';  
 Thence N 65°54'35" W a distance of 226.10';  
 Thence N 00°00'00" W a distance of 266.76';  
 Thence N 90°00'00" E a distance of 281.89';  
 Thence N 67°00'20" E a distance of 228.28';  
 Thence N 71°54'35" E a distance of 191.43';  
 Thence N 69°58'00" E a distance of 208.37';  
 Thence S 52°51'24" E a distance of 163.37';  
 Thence S 01°23'36" E a distance of 20.00';

Thence N 89°36'24" E a distance of 157.75';  
 Thence N 37°03'46" E a distance of 292.89';  
 Thence N 74°37'16" E a distance of 201.47';  
 Thence N 77°27'48" E a distance of 175.65';  
 Thence N 57°16'23" E a distance of 318.53';  
 Thence S 62°43'27" E a distance of 167.43';  
 Thence S 02°43'37" E a distance of 167.43';  
 Thence S 57°16'23" W a distance of 162.76';  
 Thence S 31°48'56" E a distance of 80.74';  
 Thence S 65°25'30" W a distance of 128.44';  
 Thence around a curve to the right with a chord bearing of S 16°33'44" E, a chord distance of 118.87';  
 Thence N 81°27'02" E a distance of 126.62';  
 Thence S 00°00'00" E a distance of 181.72';  
 Thence S 20°22'30" W a distance of 437.23';  
 Thence around a curve to the right with a chord bearing of S 78°53'13" E, a chord distance of 87.35';  
 Thence S 78°53'13" E, a radius of 530.00', a distance of 87.45';  
 Thence S 74°10'00" E a distance of 502.10' to a point on the East Line of the Southeast Quarter;  
 Thence continuing S 74°10'00" E a distance of 78.75';  
 Thence N 60°53'22" E a distance of 35.39';  
 Thence S 74°03'17" E a distance of 50.00';  
 Thence S 15°56'43" W a distance of 52.81';  
 Thence around a curve to the left with a chord bearing of S 14°28'59" W a chord distance of 54.65';  
 Thence S 14°28'59" W, a radius of 1071.02', a distance of 54.66';  
 Thence N 76°58'44" W a distance of 50.00';  
 Thence N 30°14'34" E a distance of 36.04';  
 Thence N 74°10'00" W a distance of 63.07';  
 to the Point of Beginning.

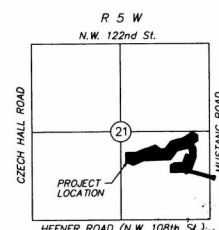
Containing 1077781.6243 square feet or 24.7425 acres more or less.

LINE	BEARING	DISTANCE	AREA
1	N 74°10'00" W	519.12'	
2	Chord	131.73'	
3	S 89°43'17" W	29.36'	
4	S 43°31'12" W	35.86'	
5	N 87°17'01" W	50.00'	
6	Chord	22.52'	
7	S 89°43'17" W	20.04'	
8	S 89°43'17" W	435.01'	
9	N 00°00'00" E	209.83'	
10	N 62°48'29" E	132.94'	
11	N 89°43'17" E	248.66'	
12	N 202°2'30" E	307.50'	
13	N 90°00'00" E	108.14'	
14	Chord	170.76'	
15	S 77°27'52" W	172.27'	
16	S 77°27'52" W	343.13'	
17	S 37°03'46" W	343.93'	
18	S 89°36'24" W	783.81'	
19	S 67°00'20" W	355.63'	
20	N 65°54'35" W	226.10'	
21	N 00°00'00" W	266.76'	
22	N 90°00'00" E	281.89'	
23	N 67°00'20" E	228.28'	
24	N 71°54'35" E	191.43'	
25	N 69°58'00" E	208.37'	
26	S 52°51'24" E	163.37'	
27	S 01°23'36" E	20.00'	

**LEGEND**

PE	=	Pedestrian Easement
LNA	=	Limits of No Access
BL	=	Building Limit Line
DE	=	Drainage Easement
UE	=	Utility Easement

NOTE:  
 1. All Common Areas will be maintained by the Property Owners Association.  
 2. Sidewalks are to be constructed to Oklahoma City Standards along all interior streets before occupancy permits will be issued.



**R & J ASSOCIATES  
 SURVEYING & MAPPING**  
 P.O. BOX 193  
 MUSTANG, OK 73064  
 (405) 376-4411  
 C.A. # 1906  
 Expires 6/30/03

**W.R. Pascock, Inc.**  
 Consulting Engineer  
 P.O. Box 720787 - Oklahoma City, Ok. 73172  
 412 S. Mustang Road - Oklahoma City, Ok.  
 (405) 577-2600 • Fax (405) 577-2603  
 Certificate of Authorization Number 2380  
 Expiration Date: June 30, 2003

SCALE: 1" = 100'  
 BASIS OF BEARING:  
 EAST LINE OF SOUTHEAST QUARTER  
 ASSUMED N00°00'00"E