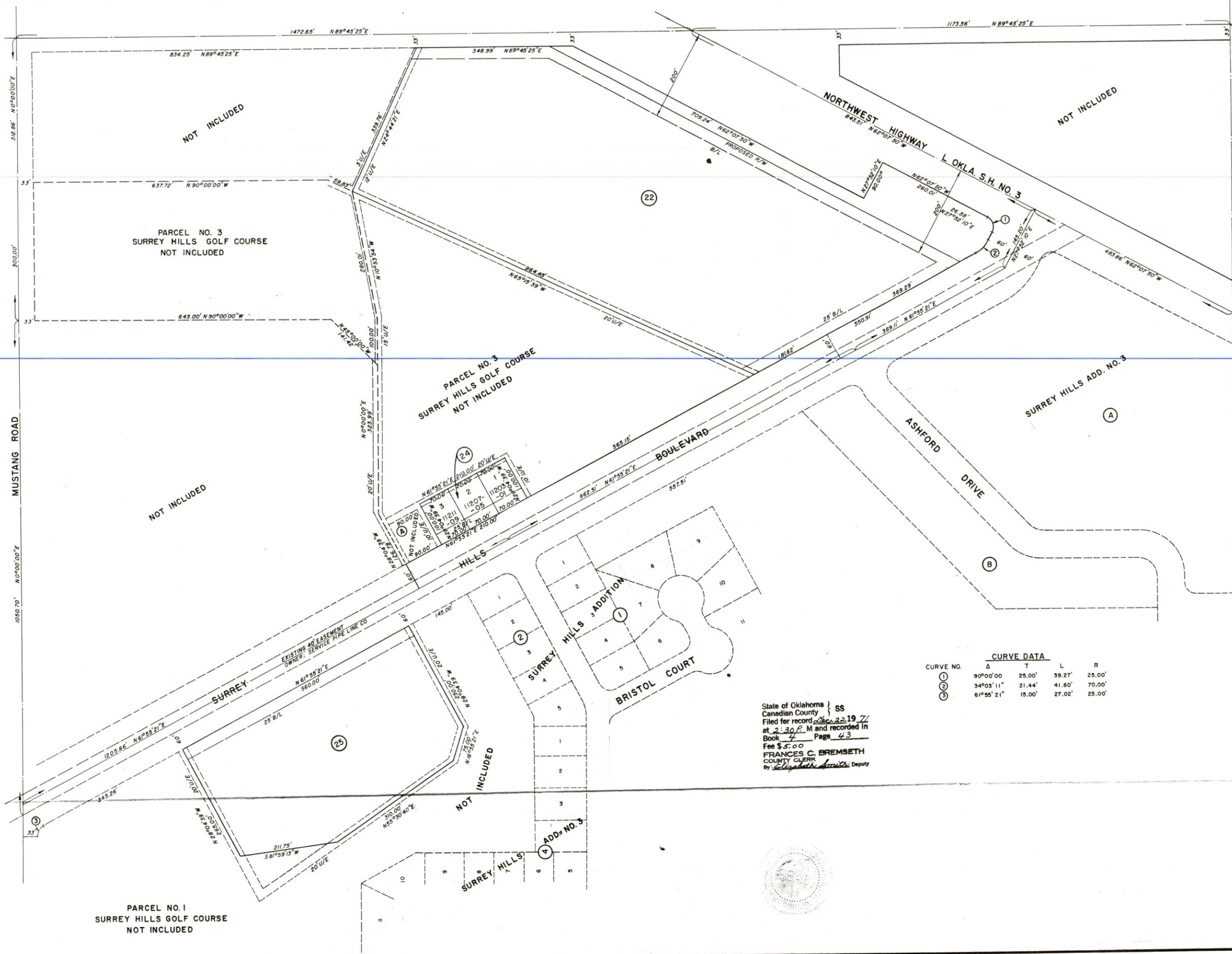


N.E. COR. NW 1/4
SEC. 22, T13N, R5W

SURREY HILLS ADDITION NO. FIVE

BEING A SUBDIVISION OF A PART OF THE NORTH
EAST 1/4 OF SECTION 21, T13N, R5W & THE NORTH WEST
OF SECTION 22, T13N, R5W, I.M. CANADIAN CO. OKLAHOMA.



CURVE DATA				
CURVE NO.	Δ	T	L	R
1	90°00'00"	25.00'	39.27'	25.00'
2	34°03'11"	21.44'	41.60'	70.00'
3	61°55'21"	15.00'	27.02'	25.00'

State of Oklahoma } SS
 Canadian County }
 Filed for record Dec. 22 1977
 at 2:30 P. M. and recorded in
 Book 4 Page 43
 Fee \$5.00
 FRANCES C. BREMSETH
 COUNTY CLERK
 By Elizabeth Smith Deputy



PARCEL NO. 1
SURREY HILLS GOLF COURSE
NOT INCLUDED

NOT INCLUDED

PARCEL NO. 3
SURREY HILLS GOLF COURSE
NOT INCLUDED

PARCEL NO. 3
SURREY HILLS GOLF COURSE
NOT INCLUDED

NOT INCLUDED

NOT INCLUDED

PLAT OF
SURREY HILLS ADDITION NO. FIVE

MAP & SURVEY BY
BENHAM-BLAIR & AFFILIATES
ENGINEERS - ARCHITECTS - CONSULTANTS
6323 N. GRAND BLVD.
OKLAHOMA CITY, OKLAHOMA.