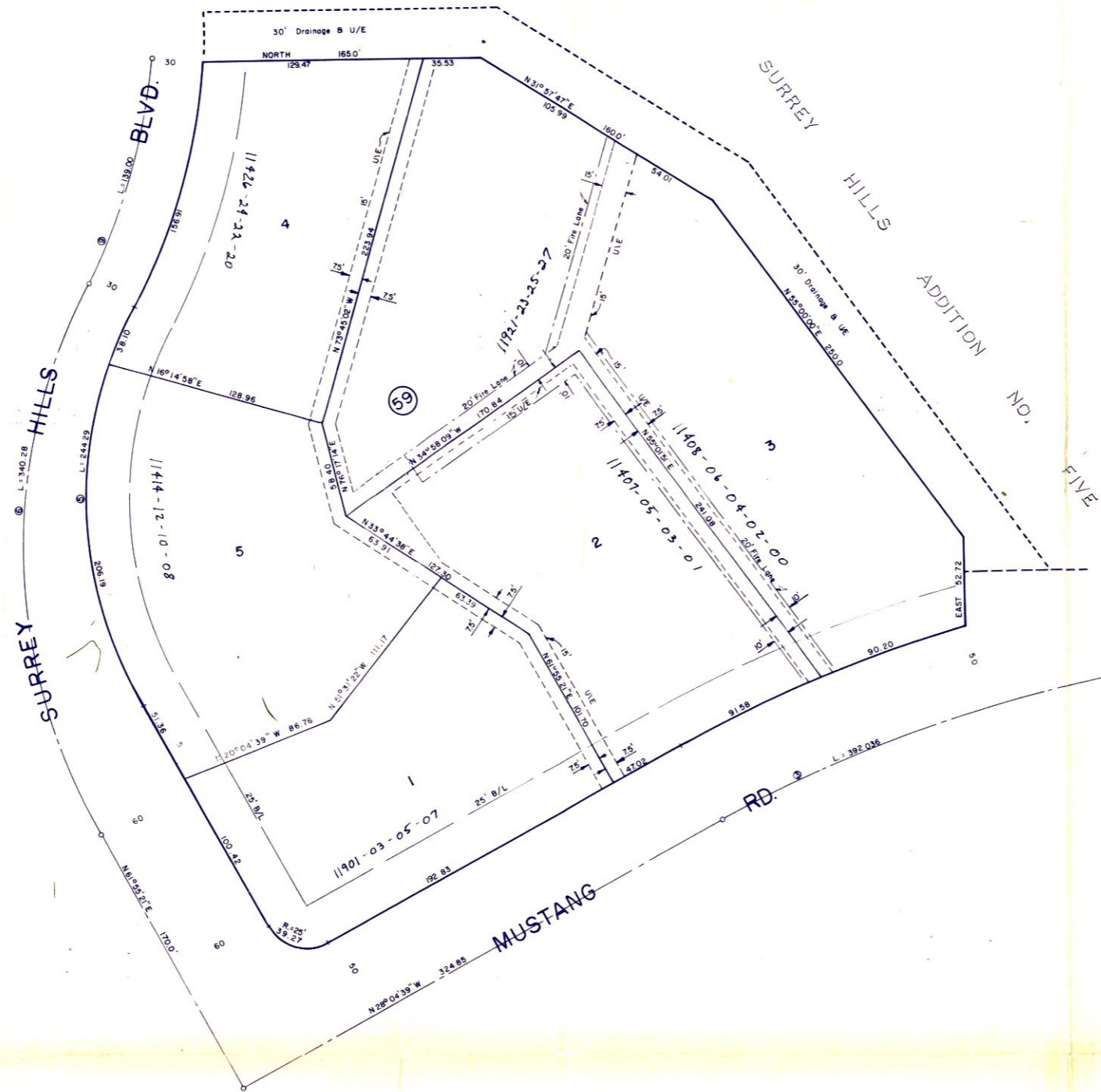


SURREY HILLS

REPLAT of BLOCK 59, ADD. NO. SEVEN

A SUBDIVISION of a PART of the NE 1/4, SEC. 21, T13N, R5W, I.M.
OKLAHOMA CITY, CANADIAN COUNTY, OKLAHOMA

41



Curve No.	CURVE DATA			
	Δ	T	R	L
3	28° 04' 39"	2000.4'	800.0'	392.04'
5	55° 42' 14"	132.77'	251.21'	244.29'
6	55° 42' 14"	184.94'	350.0'	340.28'
9	22° 45' 17"	70.43'	350.0'	139.0'