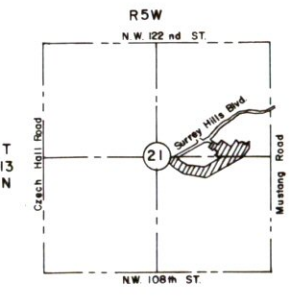
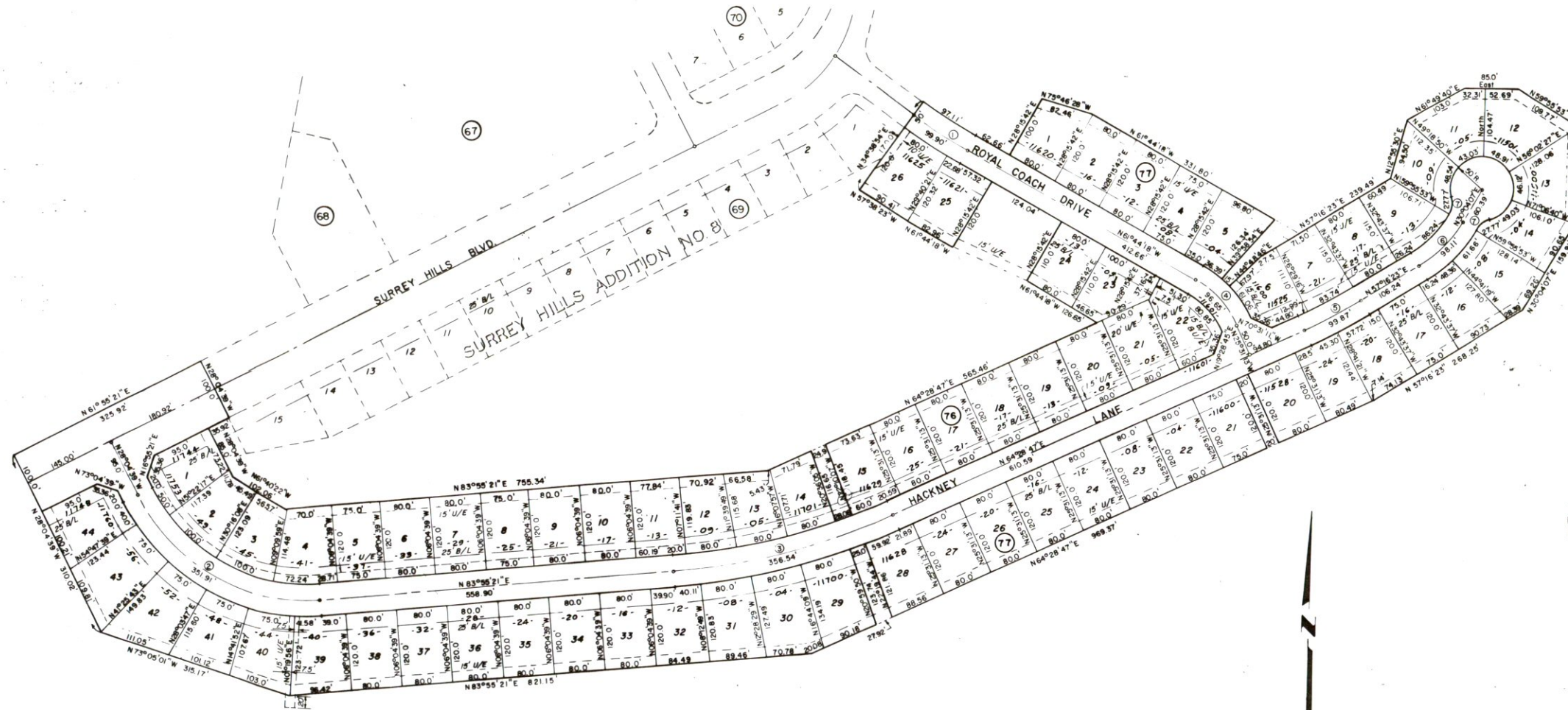


CURVE DATA				
Curve No.	Delta	Tangent	Length	Radius
1	06°23'12"	50.0'	99.90'	896.20'
2	68°00'00"	200.0'	351.91'	296.51'
3	19°26'34"	180.0'	356.54'	1,050.68'
4	36°13'05"	50.0'	96.65'	152.89'
5	07°12'24"	50.0'	99.87'	793.99'
6	27°12'16"	50.0'	98.11'	206.64'
7	45°00'00"	14.66'	27.80'	35.40'

# SURREY HILLS ADDITION NO. NINE

A SUBDIVISION OF A PART OF SEC. 21, T13N, R5W, INDIAN MERIDIAN  
OKLAHOMA CITY, CANADIAN COUNTY, OKLAHOMA



Scale: 1" = 100'