

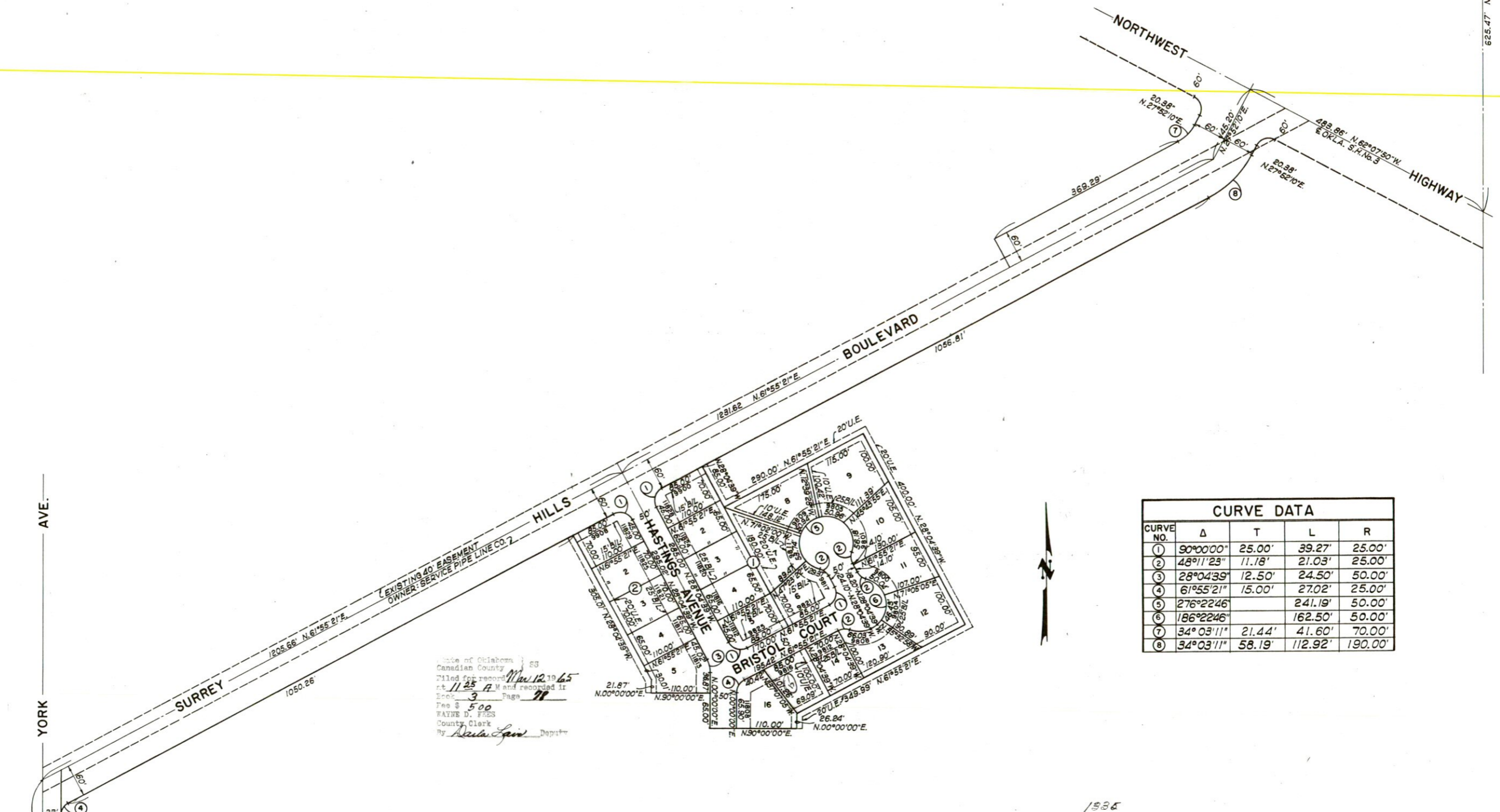
18

SURREY HILLS ADDITION

BEING A SUBDIVISION OF THE NORTH WEST 1/4 OF SECTION 22, T13N, R5W, I.M., OKLAHOMA CITY, OKLAHOMA

N.E. Cor. of NW 1/4
Sec. 22, T13N, R5W

525.47' N.0°00'00"E



CURVE DATA				
CURVE NO.	Δ	T	L	R
1	90°00'00"	25.00'	39.27'	25.00'
2	48°11'23"	11.18'	21.03'	25.00'
3	28°04'39"	12.50'	24.50'	50.00'
4	61°55'21"	15.00'	27.02'	25.00'
5	276°22'46"		241.19'	50.00'
6	186°22'46"		162.50'	50.00'
7	34°03'11"	21.44'	41.60'	70.00'
8	34°03'11"	58.19'	112.92'	190.00'

State of Oklahoma 53
 Canadian County
 Filed for record *Nov 12, 1965*
 at *11:25 AM* and recorded in
 Book *3* Page *71*
 Fee \$ *5.00*
 WAYNE D. FREDS
 County Clerk
 By *Archie Spivey* Deputy

98672' N.0°00'00"E
 53.83' S.87°15'14"W
 Sec. 22, T13N, R5W

MAP & SURVEY BY
BENHAM ENGINEERING COMPANY
 CONSULTING ENGINEERS
 215 N.E. 23RD. STREET
 OKLAHOMA CITY, OKLAHOMA