

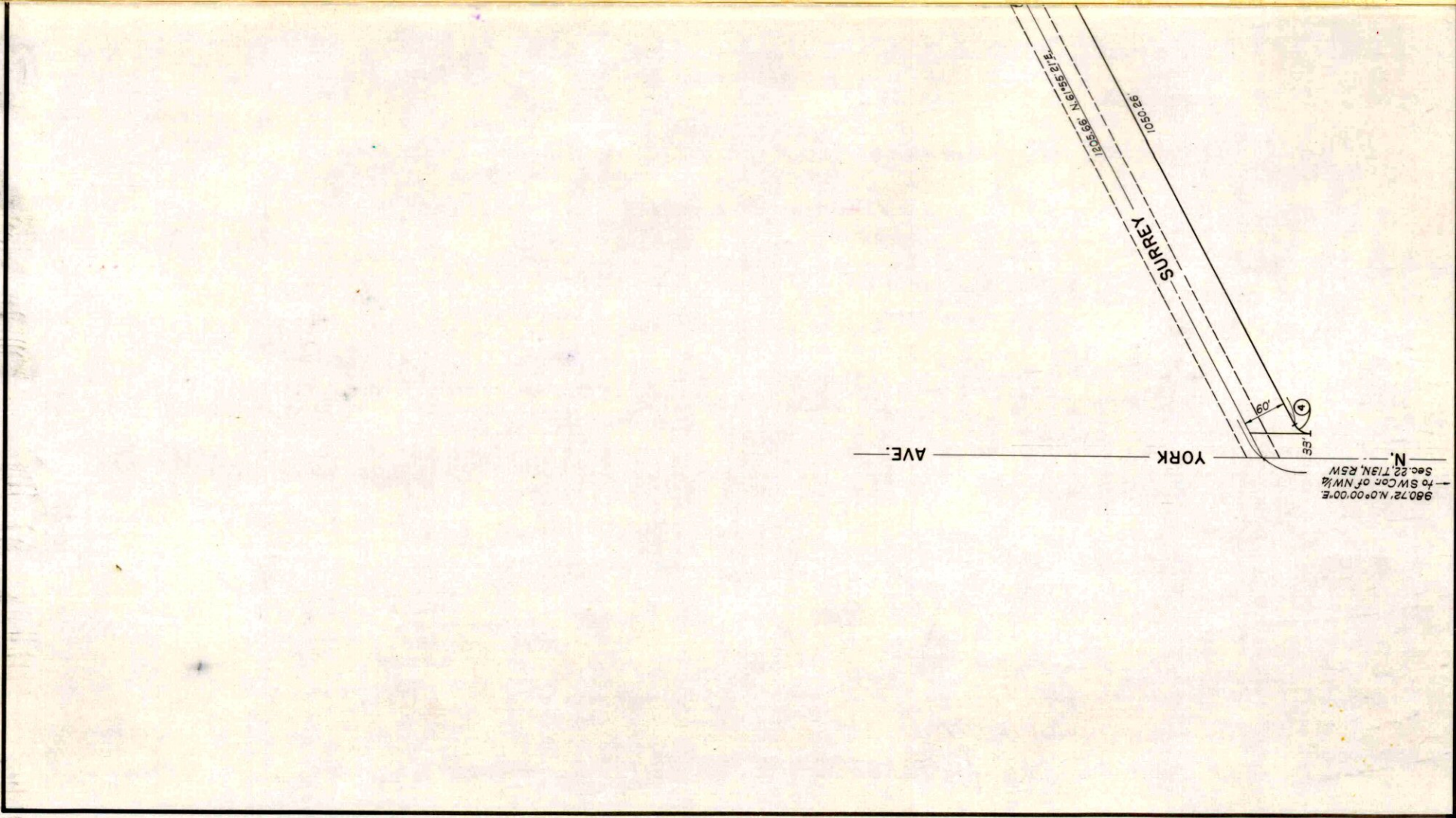
C of NW 1/4
2.713N, R5W

628.47' N0°00'00"E

HIGHWAY

MAP & SURVEY BY
ENGINEERING COMPANY
CONSULTING ENGINEERS
15 N.E. 23 RD. STREET
MOWA CITY, OKLAHOMA

SHEET 2 OF 2



18

18

11
12
13