

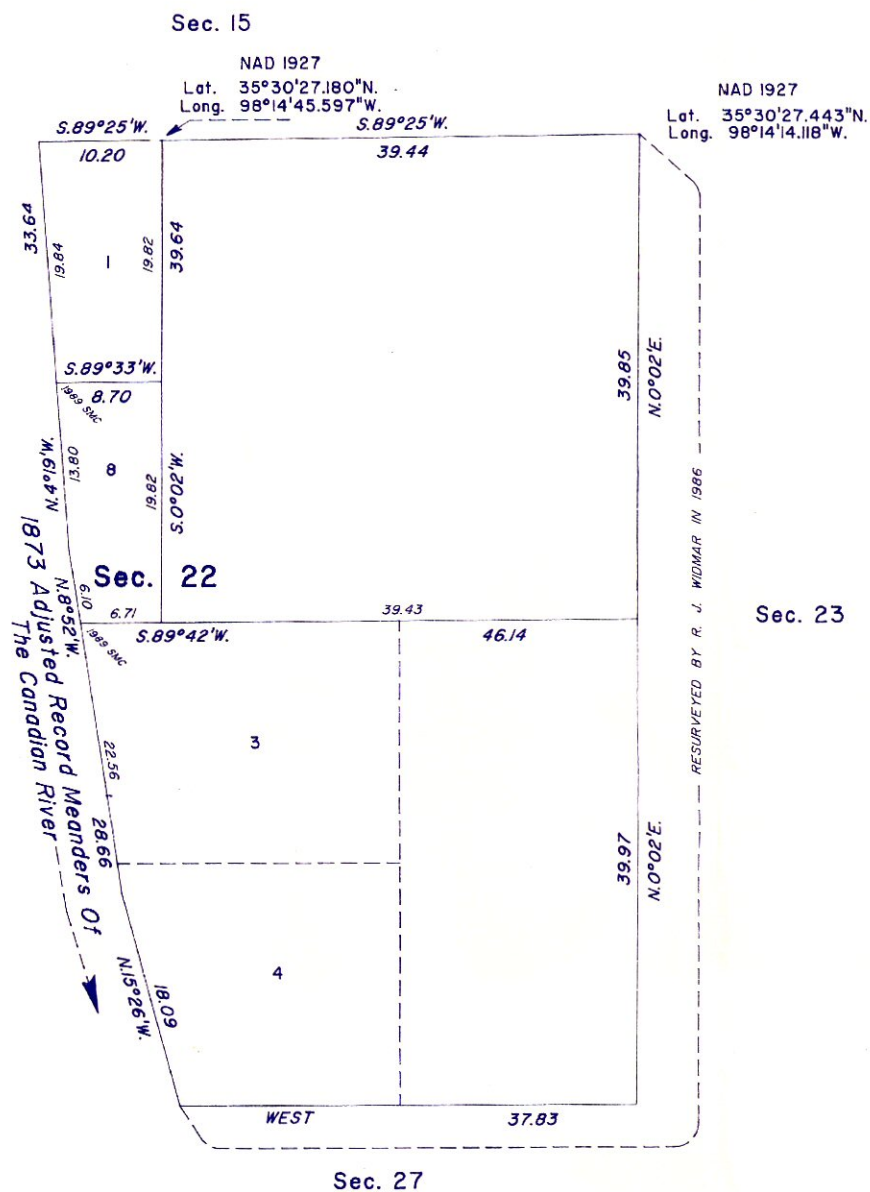
TOWNSHIP 12 NORTH, RANGE 10 WEST, OF THE INDIAN MERIDIAN, OKLAHOMA  
CORRECTIVE DEPENDENT RESURVEY AND CORRECTIVE SUBDIVISION OF SECTION

STATE OF OKLAHOMA  
CANADIAN COUNTY  
FILED OR RECORDED

1994 JUL 22 P 3:25  
m.m.

MARK WISHOE  
COUNTY CLERK

Book 8  
Page 170



A history of surveys is contained in the field notes.

This plat represents the corrective dependent resurvey of a portion of the subdivisional lines, the adjusted record meanders of the 1873 left bank of the Canadian River in section 22, designed to restore the corners in their true original locations according to the best available evidence, and the corrective subdivision of section 22, Township 12 North, Range 10 West, Indian Meridian, Oklahoma.

Except as indicated hereon, the lottings and areas are as shown on the plats approved December 16, 1873 and May 17, 1988 and supplemental plat accepted September 1, 1988.

Survey executed by Richard J. Widmar, Supervisory Cadastral Surveyor, beginning August 22, 1989, and completed August 24, 1989, pursuant to Special Instructions dated August 9, 1985, and Supplemental Special Instructions dated August 1, 1989, for Group No. 52, Oklahoma.

UNITED STATES DEPARTMENT OF THE INTERIOR  
BUREAU OF LAND MANAGEMENT

Santa Fe, New Mexico March 2, 1994

This plat is strictly conformable to the approved field notes, and the survey, having been correctly executed in accordance with the requirements of law and the regulations of this Bureau, is hereby accepted.

For the Director

Chief Cadastral Surveyor for New Mexico

15837