

TH' REMUDA ADDITION

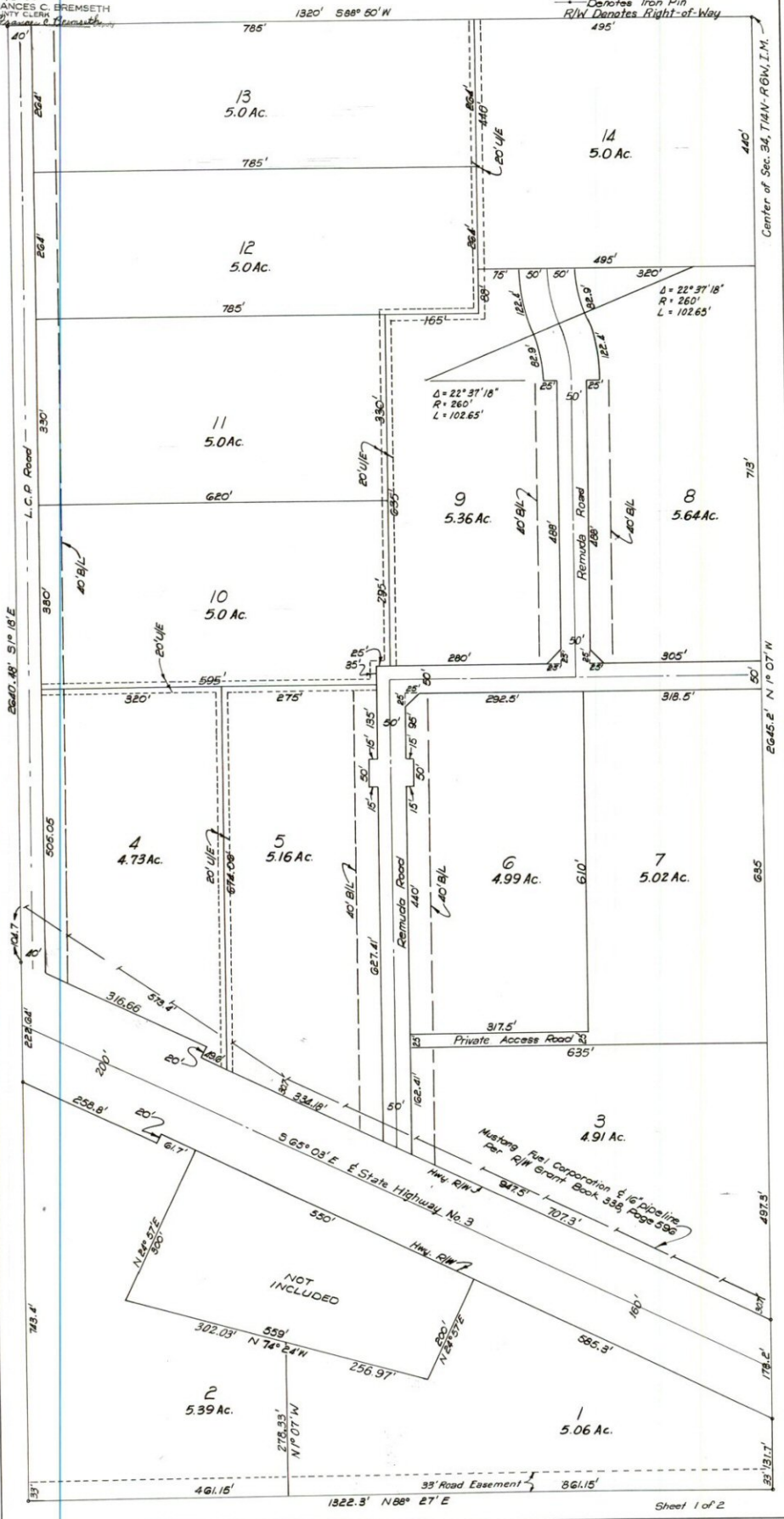
PART OF THE E1/2 OF THE SW1/4, SEC.34, T-14-N, R-6-W, I.M.

PIEDMONT, OKLAHOMA

LEGEND
 U/E Utility Easement
 B/L Building Line
 --- Denotes Iron Pin
 R/W Denotes Right-of-Way

SCALE: 1"=100'

State of Oklahoma
 Canadian County SS
 Filed for record July 7, 1971
 at 2:22 P.M. and recorded in
 Book 2, Page 32
 Fee \$ 4.00
 FRANCES C. BREMSETH
 COUNTY CLERK



Center of Sec. 34, T14N-R6W, I.M.

E645.2' N 1° 07' W

497.5'

35' 13.1'

4.5 0674