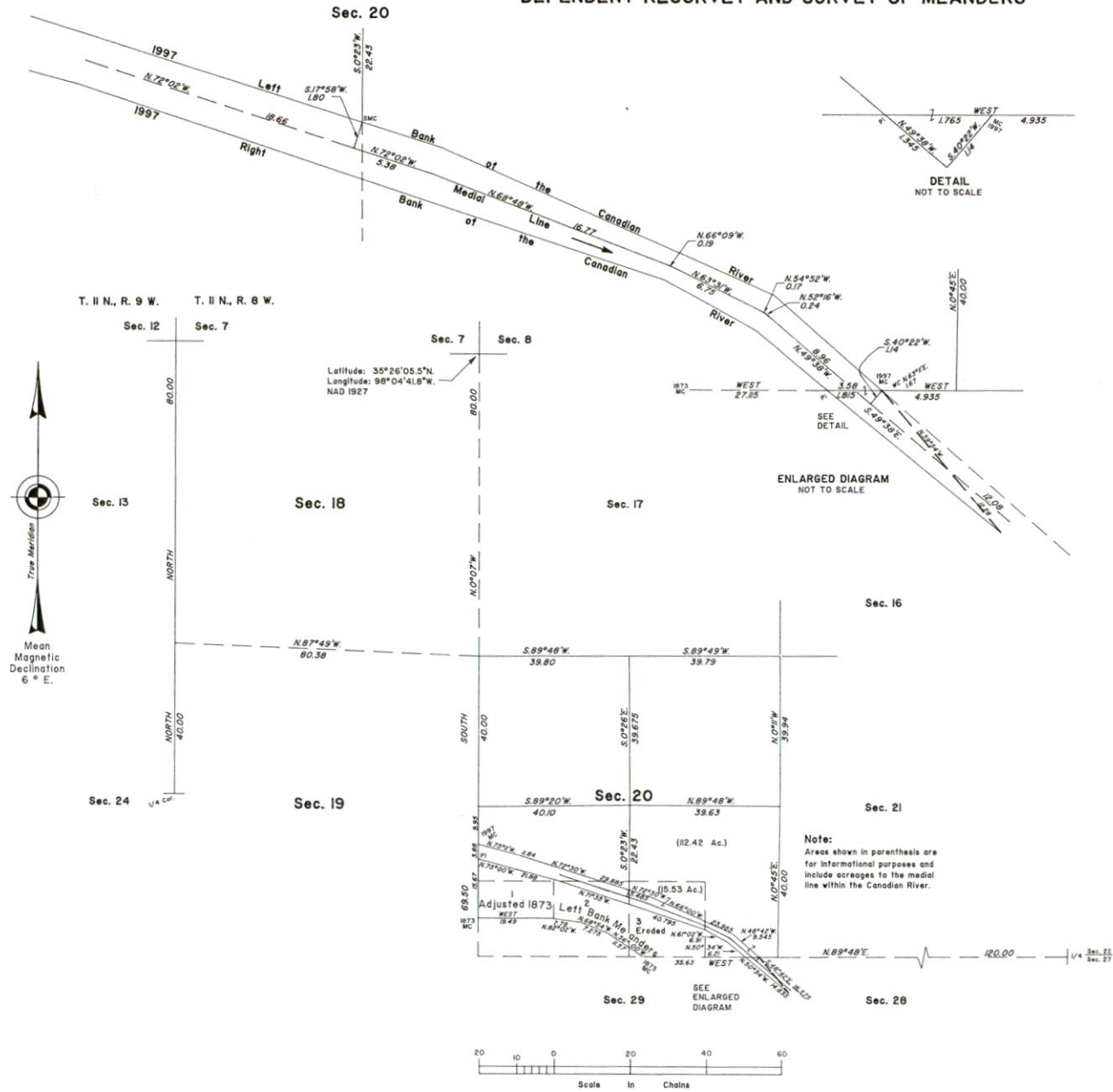


TOWNSHIP II NORTH, RANGE 8 WEST, OF THE INDIAN MERIDIAN, OKLAHOMA
DEPENDENT RESURVEY AND SURVEY OF MEANDERS

FW



FILED
OCT 28 AM 11:31
MARK MISHOE
COUNTY CLERK
Book 8
Page 361

A history of surveys and additional information are contained in the field notes.

This plat represents the dependent re-survey of a portion of the west boundary, a portion of the subdivisional lines, and the adjusted 1873 meanders of the left bank of the Canadian River in section 20, designed to restore the corners in their true original locations according to the best available evidence, and the subdivision of section 20, the survey of the 1997 meanders of the right and left banks of the Canadian River, in section 20 and partition of riverbed lines and a portion of the 1997 medial line of the Canadian River in section 20, Township II North, Range 8 West, Indian Meridian, Oklahoma.

Except as indicated hereon, the lottings and areas are as shown on the plat approved December 16, 1873.

Survey executed by Richard J. Widmar, Cadastral Surveyor, beginning July 20, 1997, and completed August 12, 1997, pursuant to Special Instructions dated July 14, 1997, for Group No. 76, Oklahoma.

UNITED STATES DEPARTMENT OF THE INTERIOR
BUREAU OF LAND MANAGEMENT

Santa Fe, New Mexico September 29, 1999

This plat is strictly conformable to the approved field notes, and the survey, having been correctly executed in accordance with the requirements of law and the regulations of this Bureau, is hereby accepted.

For the Director

James D. Clofflin

Acting Chief Cadastral Surveyor for New Mexico