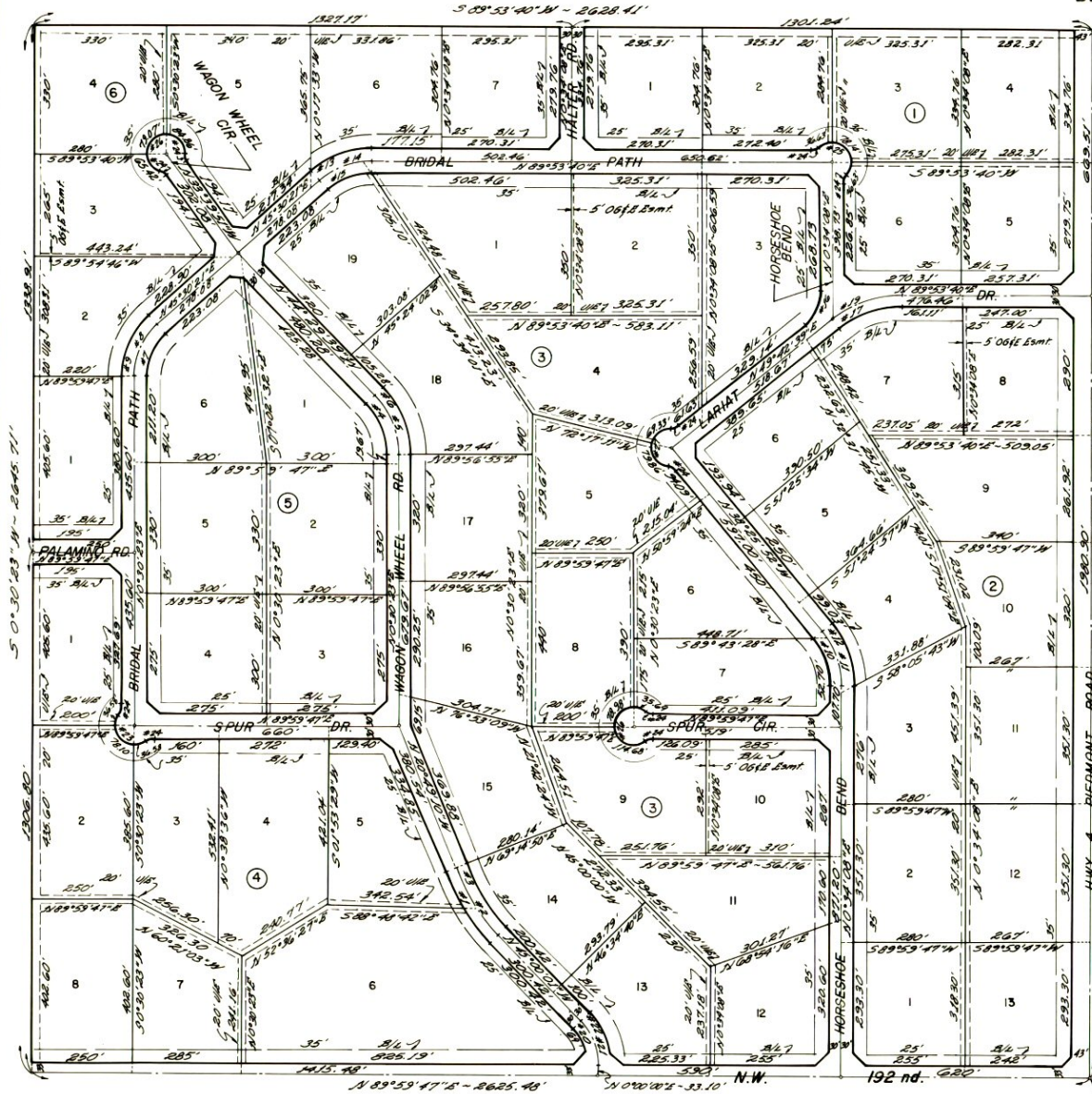


FINAL PLAT
VAILS RANCHETTES
 BEING A SUBDIVISION OF THE SE 1/4, SEC. 20, T14N, R5W, I.M.
 CITY OF PIEDMONT
 CANADIAN COUNTY, OKLAHOMA



SCALE: 1" = 200'

CURVE DATA					
No.	Tangent	Δ	Radius	Length	Chord
1.	106.43	24°10'51"	496.84	209.68	208.13
2.	100.00	24°10'51"	466.84	197.07	195.56
3.	93.57	24°10'51"	436.84	184.36	183.00
4.	87.57	45°00'02"	211.42	166.05	161.82
5.	80.00	45°00'02"	241.42	189.61	184.78
6.	112.45	45°00'02"	271.42	213.18	207.74
7.	62.57	44°59'58"	151.07	108.65	105.67
8.	75.00	44°59'58"	181.07	142.21	138.58
9.	87.43	44°59'58"	211.07	165.77	161.54
10.	64.38	39°00'00"	181.79	123.74	121.37
11.	75.00	39°00'00"	211.79	144.16	141.39
12.	85.62	39°00'00"	241.79	164.58	161.42
13.	87.24	44°23'19"	213.83	165.66	161.55
14.	75.00	44°23'19"	183.83	142.42	138.88
15.	62.76	44°23'19"	153.83	119.18	116.22
16.	61.28	49°28'31"	134.03	114.96	111.46
17.	88.19	40°11'01"	241.09	169.09	165.64
18.	-	-	-	-	-
19.	99.16	40°11'01"	271.09	190.13	186.25
20.	49.57	45°00'04"	119.67	94.00	91.60
21.	62.00	45°00'04"	149.67	117.56	114.56
22.	74.43	45°00'04"	179.67	141.12	137.52
23.	-	173°19'46"	50.00	151.26	99.83
24.	11.34	41°24'38"	30.00	21.68	21.21
25.	-	173°29'38"	50.00	151.40	99.84
26.	-	262°49'10"	50.00	229.35	75.00
27.	-	170°37'41"	50.00	149.19	99.69



Note: All interior streets are 60' in width.

SE Cor. 5E 14, Sec. 20
 T14N, R5W, I.M.