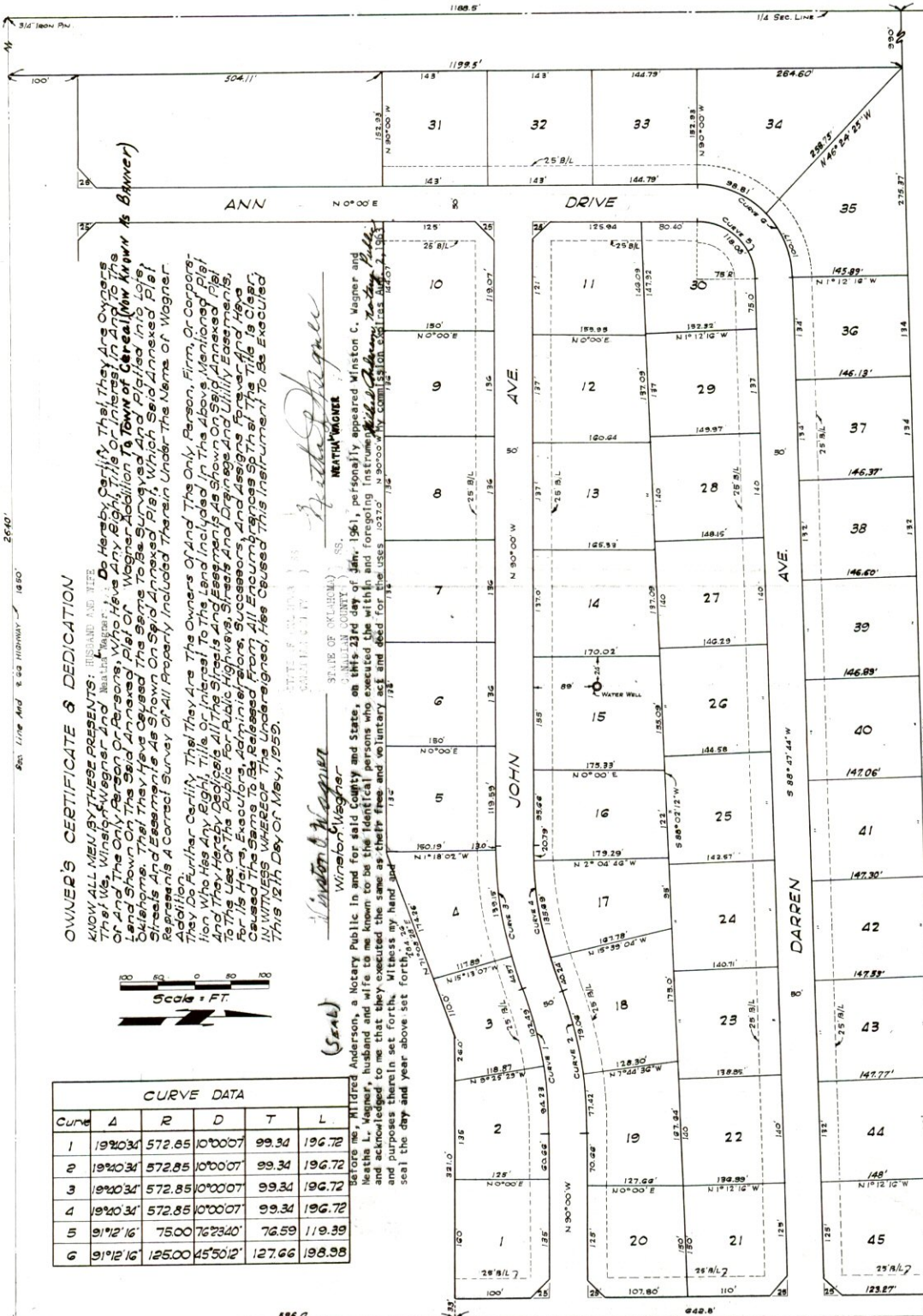


WAGNER ADDITION TO CEREAL, OKLAHOMA

LOTS 1-45
PART OF SE 1/4 SEC. 17-T12N-R6W
CANADIAN COUNTY

323



STATE OF OKLAHOMA)
CANADIAN COUNTY)
Filed for record this 14th day of
Jan. 19 1955 at 10 o'clock A.M.
and recorded in Book 3, Page 323
C. E. BRUSS, COUNTY CLERK.

STATE OF OKLAHOMA)
CANADIAN COUNTY)
I, Joe Phelps, do hereby certify that I am by Profession a Land Surveyor and Civil
Engineer, and that I am the duly Licensed Surveyor of the Wagner Addition to
Cereal, Oklahoma, and that I have personally supervised the survey and
the laying out of the lots shown on this plat, and that the monuments shown
thereon are correctly shown.

Joe Phelps
Joe Phelps, Reg. No. 2910

STATE OF OKLAHOMA)
CANADIAN COUNTY)
I, Fred Ward, do hereby certify that I am by Profession a Professional Engineer and
Civil Engineer, and that I am the duly Licensed Professional Engineer and
Civil Engineer of the State of Oklahoma, and that I have personally supervised
the survey and the laying out of the lots shown on this plat, and that the
monuments shown thereon are correctly shown.

Fred Ward
Fred Ward, Reg. No. 2910

STATE OF OKLAHOMA)
CANADIAN COUNTY)
I, Joe Phelps, do hereby certify that I am by Profession a Land Surveyor and Civil
Engineer, and that I am the duly Licensed Surveyor of the Wagner Addition to
Cereal, Oklahoma, and that I have personally supervised the survey and
the laying out of the lots shown on this plat, and that the monuments shown
thereon are correctly shown.

Joe Phelps
Joe Phelps, Reg. No. 2910

OWNER'S CERTIFICATE & DEDICATION

KNOW ALL MEN BY THESE PRESENTS: HEREBY AND I HEREBY
certify that I, the undersigned, do hereby certify that I am by Profession a
Land Surveyor and Civil Engineer, and that I am the duly Licensed Surveyor
of the Wagner Addition to Cereal, Oklahoma, and that I have personally
supervised the survey and the laying out of the lots shown on this plat,
and that the monuments shown thereon are correctly shown.

STATE OF OKLAHOMA)
CANADIAN COUNTY)
I, Fred Ward, do hereby certify that I am by Profession a Professional Engineer and
Civil Engineer, and that I am the duly Licensed Professional Engineer and
Civil Engineer of the State of Oklahoma, and that I have personally supervised
the survey and the laying out of the lots shown on this plat, and that the
monuments shown thereon are correctly shown.

STATE OF OKLAHOMA)
CANADIAN COUNTY)
I, Joe Phelps, do hereby certify that I am by Profession a Land Surveyor and Civil
Engineer, and that I am the duly Licensed Surveyor of the Wagner Addition to
Cereal, Oklahoma, and that I have personally supervised the survey and
the laying out of the lots shown on this plat, and that the monuments shown
thereon are correctly shown.

STATE OF OKLAHOMA)
CANADIAN COUNTY)
I, Fred Ward, do hereby certify that I am by Profession a Professional Engineer and
Civil Engineer, and that I am the duly Licensed Professional Engineer and
Civil Engineer of the State of Oklahoma, and that I have personally supervised
the survey and the laying out of the lots shown on this plat, and that the
monuments shown thereon are correctly shown.

STATE OF OKLAHOMA)
CANADIAN COUNTY)
I, Joe Phelps, do hereby certify that I am by Profession a Land Surveyor and Civil
Engineer, and that I am the duly Licensed Surveyor of the Wagner Addition to
Cereal, Oklahoma, and that I have personally supervised the survey and
the laying out of the lots shown on this plat, and that the monuments shown
thereon are correctly shown.

STATE OF OKLAHOMA)
CANADIAN COUNTY)
I, Fred Ward, do hereby certify that I am by Profession a Professional Engineer and
Civil Engineer, and that I am the duly Licensed Professional Engineer and
Civil Engineer of the State of Oklahoma, and that I have personally supervised
the survey and the laying out of the lots shown on this plat, and that the
monuments shown thereon are correctly shown.

Curve	Δ	R	D	T	L
1	19°10'34"	572.85	10°00'07"	99.34	196.72
2	19°10'34"	572.85	10°00'07"	99.34	196.72
3	19°10'34"	572.85	10°00'07"	99.34	196.72
4	19°10'34"	572.85	10°00'07"	99.34	196.72
5	91°12'16"	75.00	76°23'40"	76.59	119.39
6	91°12'16"	125.00	45°50'12"	127.66	198.98

(Seal)

Know all men, that I, the undersigned, do hereby certify that I am by Profession a
Land Surveyor and Civil Engineer, and that I am the duly Licensed Surveyor
of the Wagner Addition to Cereal, Oklahoma, and that I have personally
supervised the survey and the laying out of the lots shown on this plat,
and that the monuments shown thereon are correctly shown.

STATE OF OKLAHOMA)
CANADIAN COUNTY)
I, Fred Ward, do hereby certify that I am by Profession a Professional Engineer and
Civil Engineer, and that I am the duly Licensed Professional Engineer and
Civil Engineer of the State of Oklahoma, and that I have personally supervised
the survey and the laying out of the lots shown on this plat, and that the
monuments shown thereon are correctly shown.

STATE OF OKLAHOMA)
CANADIAN COUNTY)
I, Joe Phelps, do hereby certify that I am by Profession a Land Surveyor and Civil
Engineer, and that I am the duly Licensed Surveyor of the Wagner Addition to
Cereal, Oklahoma, and that I have personally supervised the survey and
the laying out of the lots shown on this plat, and that the monuments shown
thereon are correctly shown.

STATE OF OKLAHOMA)
CANADIAN COUNTY)
I, Fred Ward, do hereby certify that I am by Profession a Professional Engineer and
Civil Engineer, and that I am the duly Licensed Professional Engineer and
Civil Engineer of the State of Oklahoma, and that I have personally supervised
the survey and the laying out of the lots shown on this plat, and that the
monuments shown thereon are correctly shown.

STATE OF OKLAHOMA)
CANADIAN COUNTY)
I, Joe Phelps, do hereby certify that I am by Profession a Land Surveyor and Civil
Engineer, and that I am the duly Licensed Surveyor of the Wagner Addition to
Cereal, Oklahoma, and that I have personally supervised the survey and
the laying out of the lots shown on this plat, and that the monuments shown
thereon are correctly shown.

STATE OF OKLAHOMA)
CANADIAN COUNTY)
I, Fred Ward, do hereby certify that I am by Profession a Professional Engineer and
Civil Engineer, and that I am the duly Licensed Professional Engineer and
Civil Engineer of the State of Oklahoma, and that I have personally supervised
the survey and the laying out of the lots shown on this plat, and that the
monuments shown thereon are correctly shown.

Joe Phelps
Joe Phelps, Reg. No. 2910

JOE PHELPS
Consulting Engineer
1922 1/2 W. 23rd St.
Oklahoma City, Oklahoma

Plat By: F. J. Spitz
Calculations By: H. L. Fuesell
Checked By: J. W. Dunn

1/4 Sec. Line
2640

1/4 Sec. Line
2640