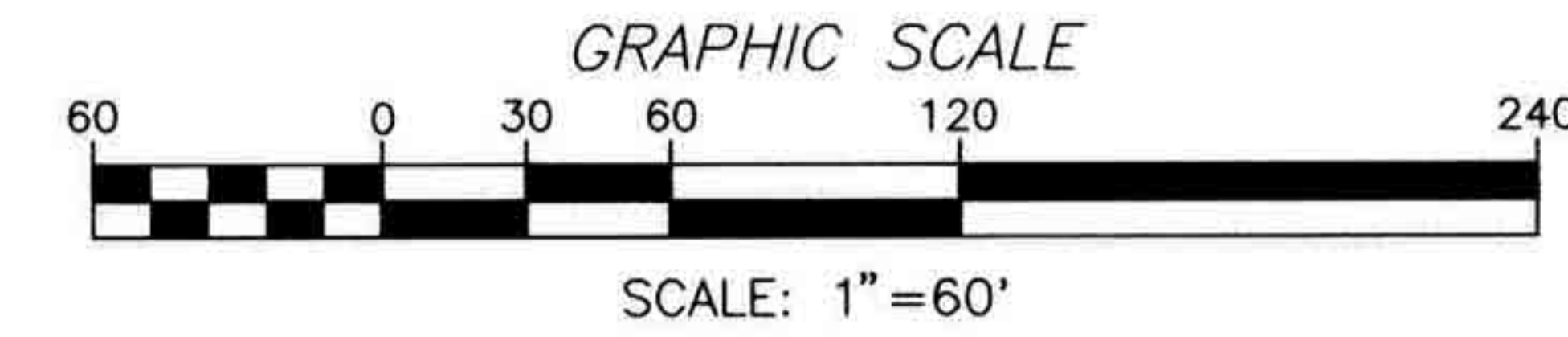


DATE: 08/28/06

NUMBER	DEFLECTION ANGLE	DELTA ANGLE	DEGREE OF CURVE - ARC	DEGREE OF CURVE - CHORD	CHORD DIRECTION	TANGENT	RADIUS	ARC LENGTH	CHORD LENGTH	EXTERNAL	MID ORDINATE
C2	207°01'04"	207°01'04"	505°41'59"	UNDEFINED	S 04°06'58" E	-47.16	11.33	40.94	22.03	59.83	13.98
C3	107°06'58"	107°06'58"	06°21'58"	06°22'10"	N 89°03'29" W	79.66	900.00	158.90	158.70	3.52	3.50
C4	52°25'49"	52°25'49"	114°35'30"	180°00'00"	S 26°15'12" W	24.62	50.00	45.75	44.17	5.73	5.14
C5	48°23'47"	48°23'47"	114°35'30"	180°00'00"	S 76°40'00" W	22.47	50.00	42.23	40.99	4.82	4.39
C6	53°28'50"	53°28'50"	114°35'30"	UNDEFINED	S 82°21'24" E	25.19	50.00	46.67	44.99	5.99	5.35
C7	55°39'17"	55°39'17"	114°35'30"	180°00'00"	N 27°47'21" W	26.39	50.00	48.57	46.68	6.54	5.78
C8	01°40'06"	01°40'06"	06°32'53"	06°33'06"	S 84°50'03" E	12.74	875.00	25.48	25.48	0.09	0.09
C9	05°14'32"	05°14'32"	06°32'53"	06°33'06"	S 88°17'22" E	40.06	875.00	80.06	80.03	0.92	0.92
C10	03°12'20"	03°12'20"	06°32'53"	06°33'06"	N 87°29'12" E	24.48	875.00	48.95	48.95	0.34	0.34
C11	04°17'44"	04°17'44"	06°11'39"	06°11'50"	N 86°08'52" W	34.69	925.00	69.35	69.33	0.65	0.65
C12	04°20'14"	04°20'14"	06°11'39"	06°11'50"	S 89°32'09" W	35.03	925.00	70.02	70.00	0.66	0.66
C13	01°29'00"	01°29'00"	06°11'39"	06°11'50"	S 86°37'32" W	11.97	925.00	23.95	23.95	0.08	0.08

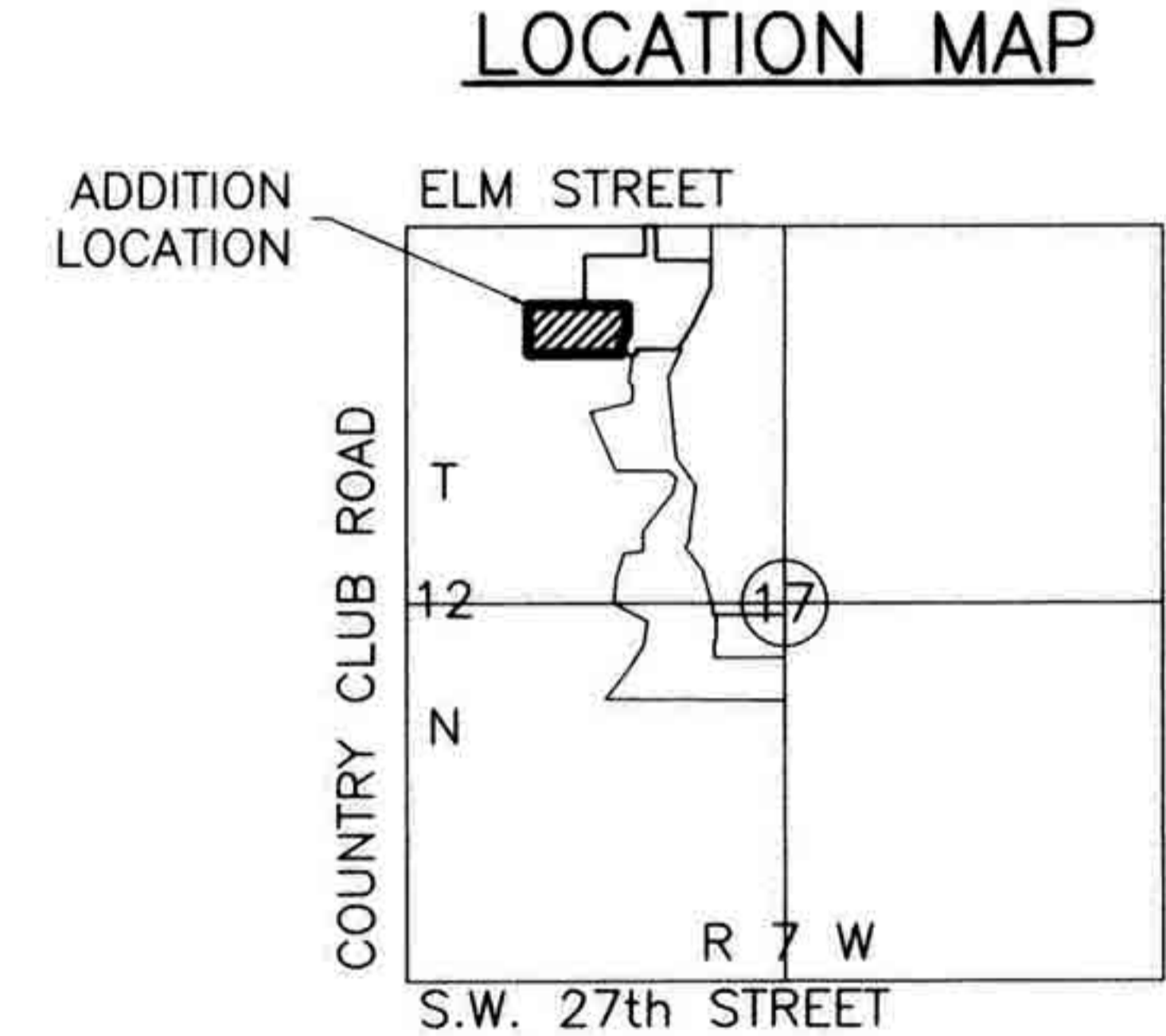
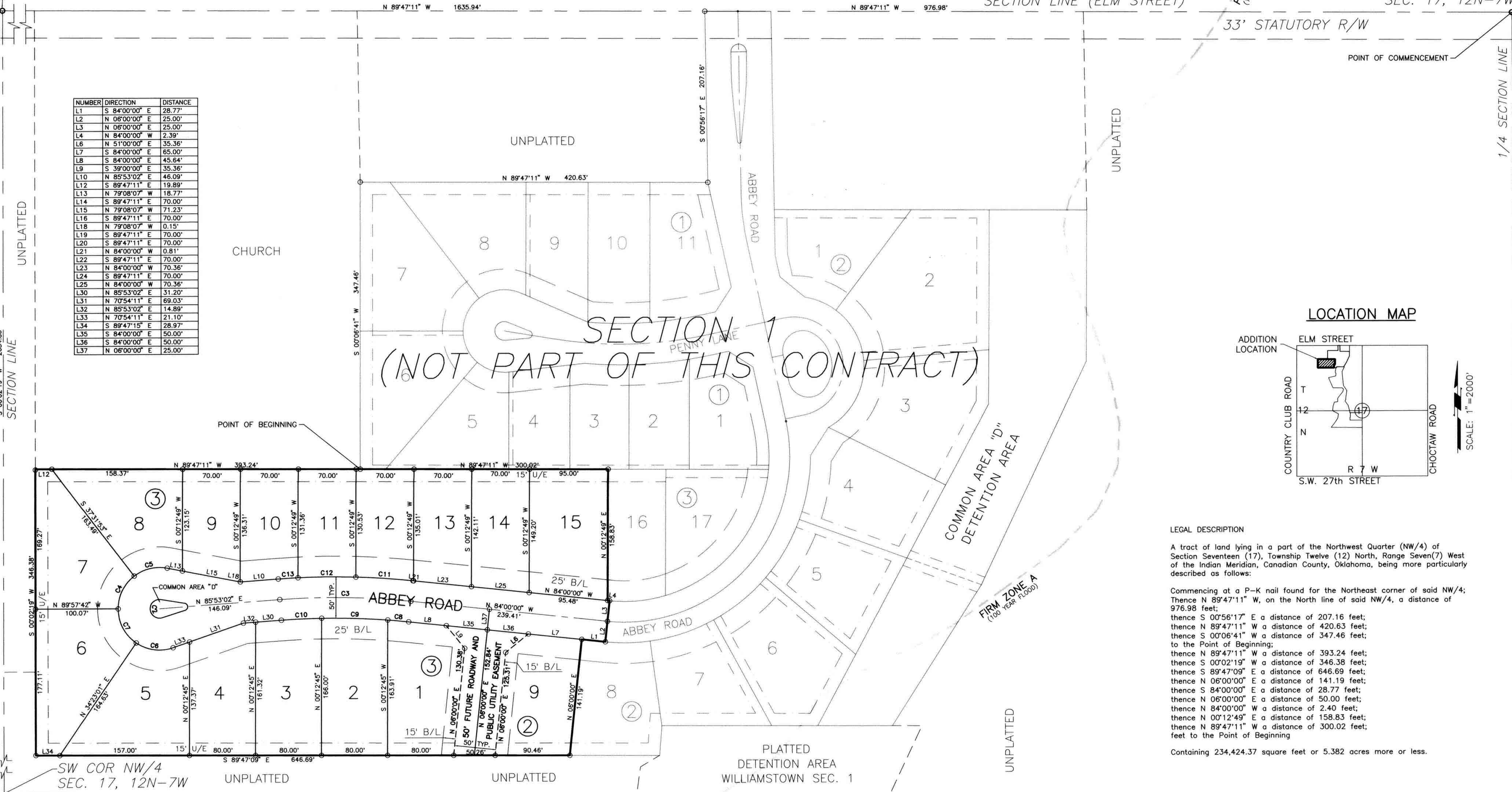
GENERAL NOTES:
 THE FOLLOWING APPLY UNLESS OTHERWISE SHOWN:
 25' FRONT YARD BUILDING LINE
 10' INTERIOR SIDE YARD SETBACK
 15' CORNER SIDE YARD SETBACK
 20% OF THE LOT DEPTH REAR YARD SETBACK
 COMMON AREAS SHALL BE MAINTAINED BY THE WESSEX PROPERTY OWNERS ASSOCIATION. COMMON AREA "D" SHALL BE DEFINED BY THE AREA BOUNDED BY THE BACK OF CURB.
 THE BEARING (N89°47'11"W) OF THE NORTH LINE OF THE NW/4 OF SECTION 17, T12N, R7W, I.M., USED AS BEARING BASE.
 SEE RESTRICTIVE COVENANTS FOR WESSEX SECTION 2, WHICH ARE FILED OF RECORD.
 o 1/2" I.R. WITH CAP CA. 1600 SET AT ALL LOT CORNERS.



PK NAIL FOUND
 NE COR NW/4
 SEC. 17, 12N-7W

PK NAIL FOUND
 NW COR NW/4
 SEC. 17, 12N-7W

NUMBER	DIRECTION	DISTANCE
L1	S 84°00'00" E	28.77'
L2	N 06°00'00" E	25.00'
L3	N 06°00'00" E	25.00'
L4	N 84°00'00" W	2.39'
L6	N 51°00'00" E	35.36'
L7	S 84°00'00" E	65.00'
L8	S 84°00'00" E	45.64'
L9	S 39°00'00" E	35.36'
L10	N 85°53'02" E	46.09'
L12	S 89°47'11" E	19.89'
L13	N 79°08'07" W	18.77'
L14	S 89°47'11" E	70.00'
L15	N 79°08'07" W	71.23'
L16	S 89°47'11" E	70.00'
L18	N 79°08'07" W	0.15'
L19	S 89°47'11" E	70.00'
L20	S 89°47'11" E	70.00'
L21	N 84°00'00" W	0.81'
L22	S 89°47'11" E	70.00'
L23	N 84°00'00" W	70.36'
L24	S 89°47'11" E	70.00'
L25	N 84°00'00" W	70.36'
L30	N 85°53'02" E	31.20'
L31	N 70°54'11" E	69.03'
L32	N 85°53'02" E	14.89'
L33	N 70°54'11" E	21.10'
L34	S 89°47'15" E	28.97'
L35	S 84°00'00" E	50.00'
L36	S 84°00'00" E	50.00'
L37	N 06°00'00" E	25.00'



LEGAL DESCRIPTION
 A tract of land lying in a part of the Northwest Quarter (NW/4) of Section Seventeen (17), Township Twelve (12) North, Range Seven(7) West of the Indian Meridian, Canadian County, Oklahoma, being more particularly described as follows:
 Commencing at a P-K nail found for the Northeast corner of said NW/4; Thence N 89°47'11" W, on the North line of said NW/4, a distance of 976.98 feet;
 thence S 00°56'17" E a distance of 207.16 feet;
 thence N 89°47'11" W a distance of 420.63 feet;
 thence S 00°06'41" W a distance of 347.46 feet;
 to the Point of Beginning;
 thence N 89°47'11" W a distance of 393.24 feet;
 thence S 00°02'19" W a distance of 346.38 feet;
 thence S 89°47'09" E a distance of 646.69 feet;
 thence N 06°00'00" E a distance of 141.19 feet;
 thence S 84°00'00" E a distance of 28.77 feet;
 thence N 06°00'00" E a distance of 50.00 feet;
 thence N 84°00'00" W a distance of 2.40 feet;
 thence N 00°12'49" E a distance of 158.83 feet;
 thence N 89°47'11" W a distance of 300.02 feet;
 feet to the Point of Beginning
 Containing 234,424.37 square feet or 5.382 acres more or less.

Revisions:
 E-844
 BRAWLEY ENGINEERING CORP.
 2400 North Lincoln Blvd. #3116
 Oklahoma City, Oklahoma 73116
 (405)848-5578 / FAX (405)848-5579
 OKLAHOMA CA NO. 114 (Renewal 6/30/07)
 CONSULTING CIVIL ENGINEERS

FINAL PLAT
 WESSEX ADDITION, SECTION 2
 A PORTION OF THE NW/4 OF SEC. 17, T12N, R7W
 AN ADDITION TO THE CITY OF EL RENO, OKLAHOMA