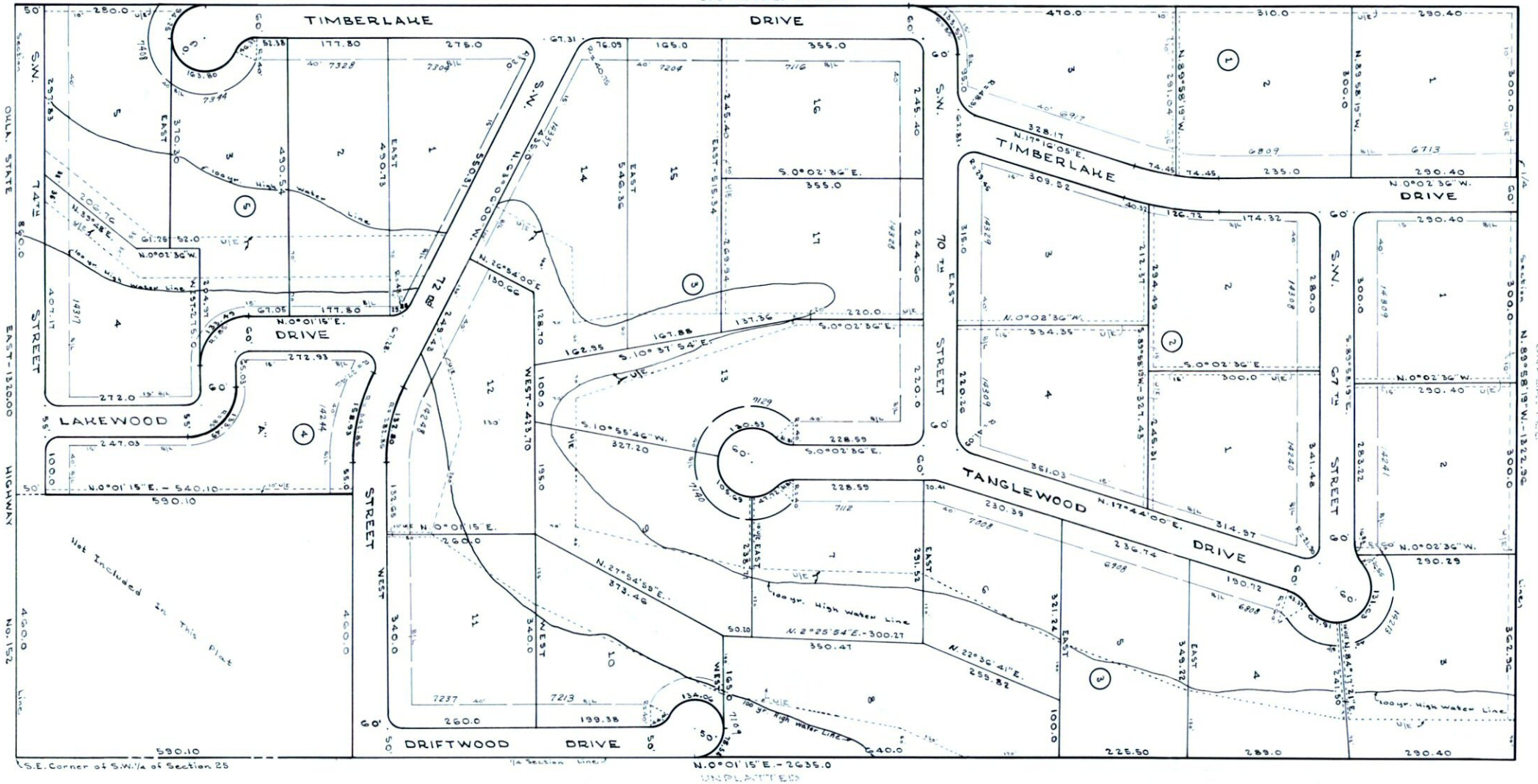


WEST TIMBERLAKE ESTATES

State of Oklahoma | SS
Canadian County
Filed for record Dec. 13, 1976
at 2:57 PM and recorded in
Book 5, Page 16
Fee \$ 5.00
FRANCES C. BREMGETH
COUNTY CLERK
By *Francis C. Bremgeth*

A PART OF EAST 1/2 OF S.W.1/4 OF SEC. 25-T11N-R6W-1.M.
CANADIAN COUNTY, OKLAHOMA
OKLAHOMA CITY, OKLAHOMA

UNPLATTED
S. 0° 02' 36" E. - 2635.65



Notes:
All block corners have a 25' radius except as shown.
UE Indicates utility easements.
DE Indicates drainage easements.
BL Indicates building lines.

Scale: 1" = 100'

CONE SURVEYING CO.
614 N.W. 26TH - 828-927
OKLAHOMA CITY, OKLAHOMA