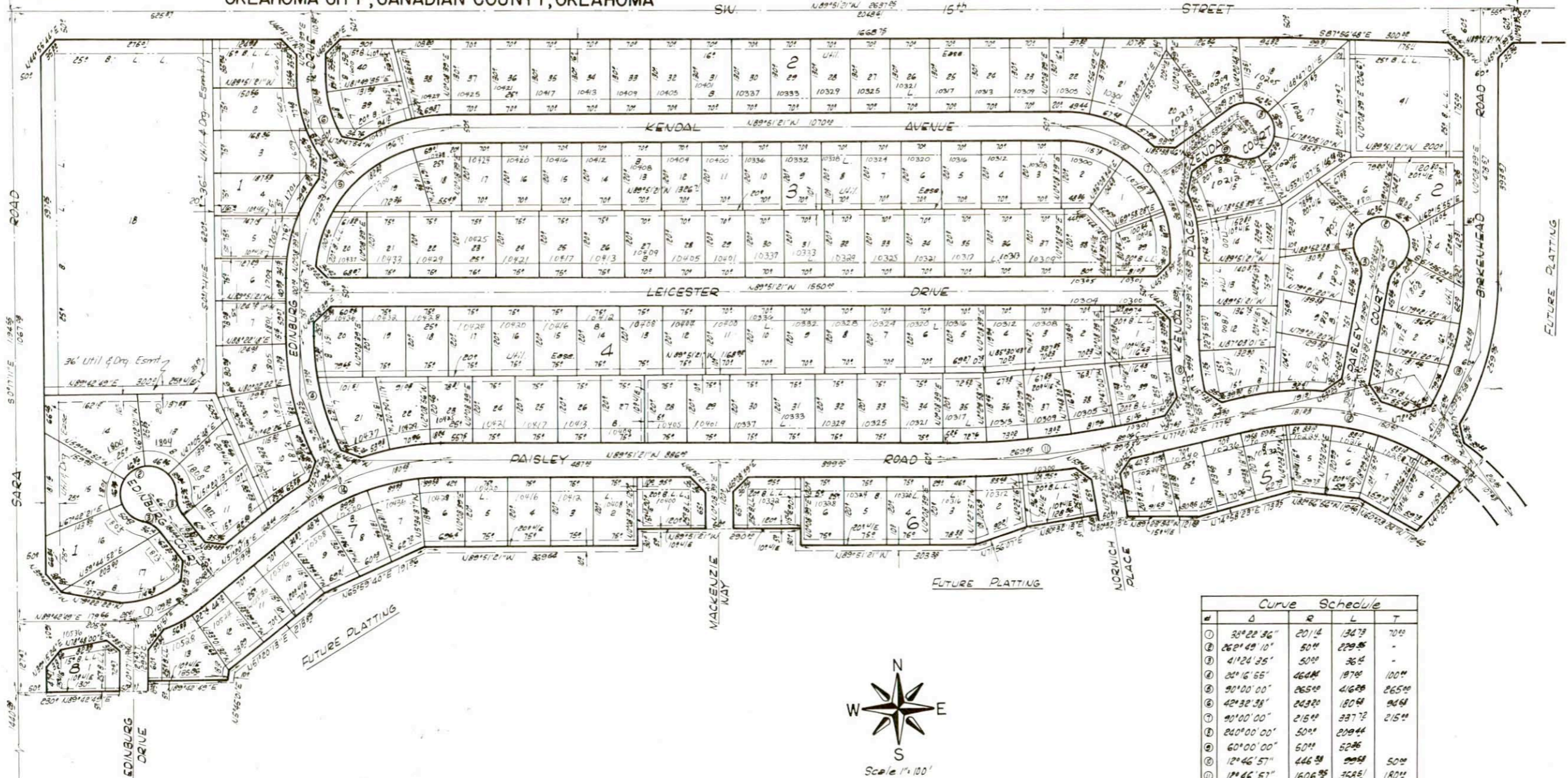


Westbury

A PART OF NW 1/4, SEC. 11, T11N, R5W, I.M.
OKLAHOMA CITY, CANADIAN COUNTY, OKLAHOMA

NW Cor Sec 11,
T11N, R5W, I.M.

NE Cor, NW 1/4, Sec 11,
T11N, R5W, I.M.



Curve Schedule				
#	Δ	R	L	T
1	30° 22' 36"	201.4	134.73	70.00
2	26° 49' 10"	50.00	229.85	-
3	41° 24' 35"	50.00	36.4	-
4	20° 16' 55"	464.00	197.00	100.00
5	30° 00' 00"	265.00	416.20	265.00
6	42° 32' 38"	243.20	180.00	246.60
7	30° 00' 00"	215.00	337.72	215.00
8	24° 00' 00"	50.00	219.44	-
9	60° 00' 00"	50.00	52.36	-
10	12° 46' 57"	446.33	209.50	50.00
11	12° 46' 57"	1606.25	358.61	180.00
12	67° 51' 18"	445.20	528.19	300.00
13	29° 49' 19"	469.42	122.23	125.00
14	38° 45' 26"	425.00	288.00	150.00

