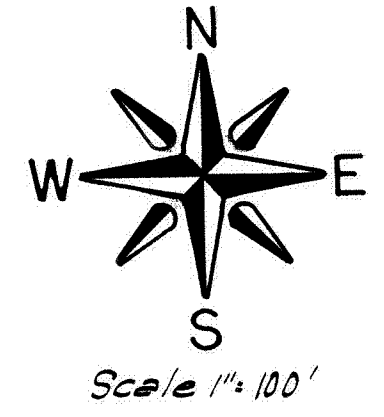
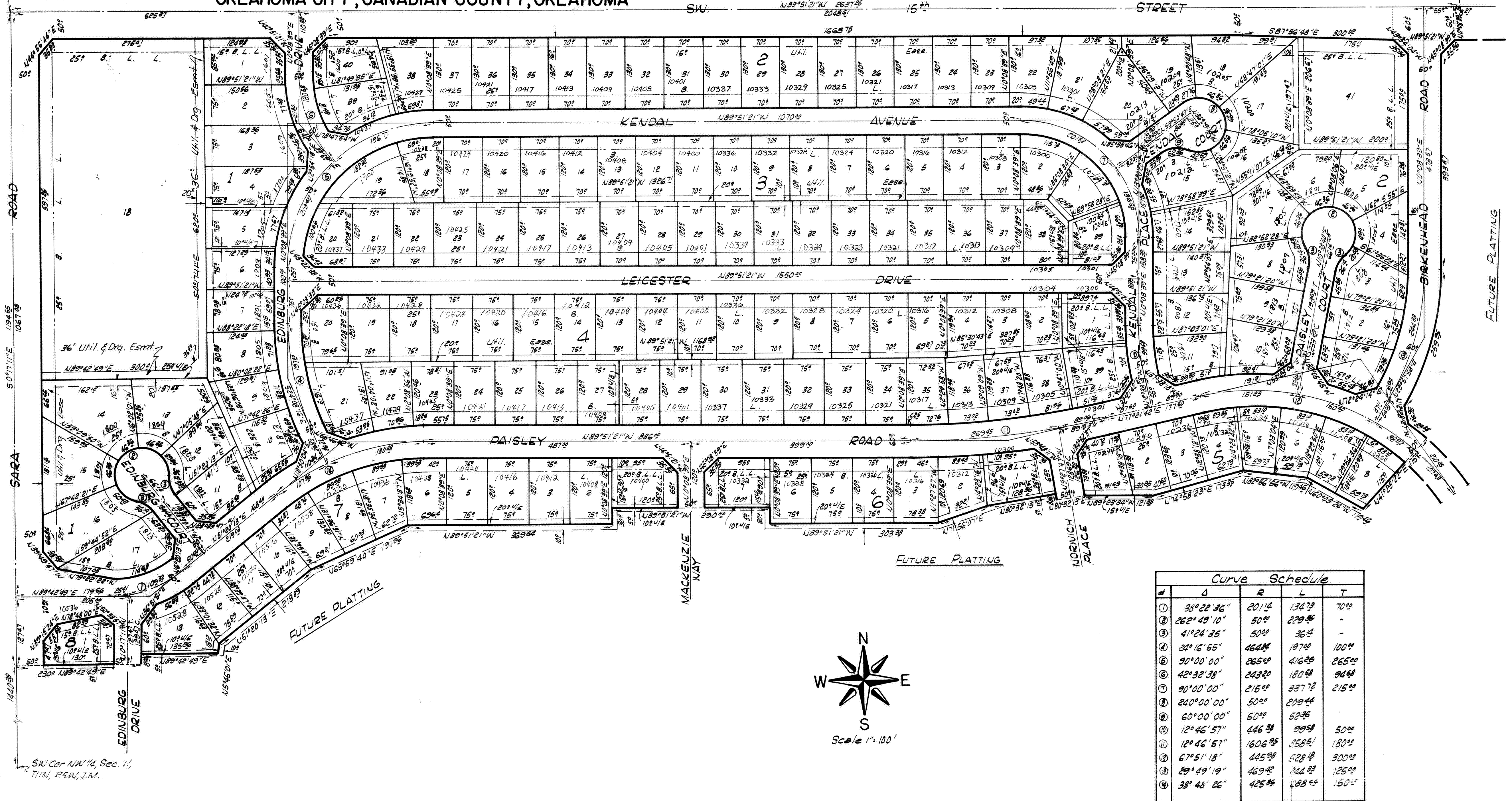


Westbury

A PART OF NW 1/4, SEC. 11, T11N, R5W, I.M.
OKLAHOMA CITY, CANADIAN COUNTY, OKLAHOMA

NW Cor Sec. 11,
T11N, R5W, I.M.

NE Cor, NW 1/4, Sec. 11,
T11N, R5W, I.M.



Curve Schedule				
#	Δ	R	L	T
①	35° 22' 36"	201.14	134.73	70.00
②	26° 2' 49' 10"	50.00	229.85	-
③	41° 24' 35"	50.00	36.14	-
④	24° 16' 55"	464.84	197.00	100.00
⑤	90° 00' 00"	265.00	416.25	265.00
⑥	42° 32' 38"	243.20	180.58	94.68
⑦	90° 00' 00"	215.00	337.12	215.00
⑧	240° 00' 00"	50.00	209.44	-
⑨	60° 00' 00"	50.00	52.35	-
⑩	12° 46' 57"	446.33	29.58	50.00
⑪	12° 46' 57"	1606.25	35.81	180.00
⑫	67° 51' 18"	445.25	52.18	300.00
⑬	29° 49' 19"	469.42	22.63	125.00
⑭	38° 46' 26"	425.00	238.00	150.00

Plat By: PHILLIPS & STONG ENGINEERING CO.
2832 Wilshire Blvd. Okla. City, Okla.