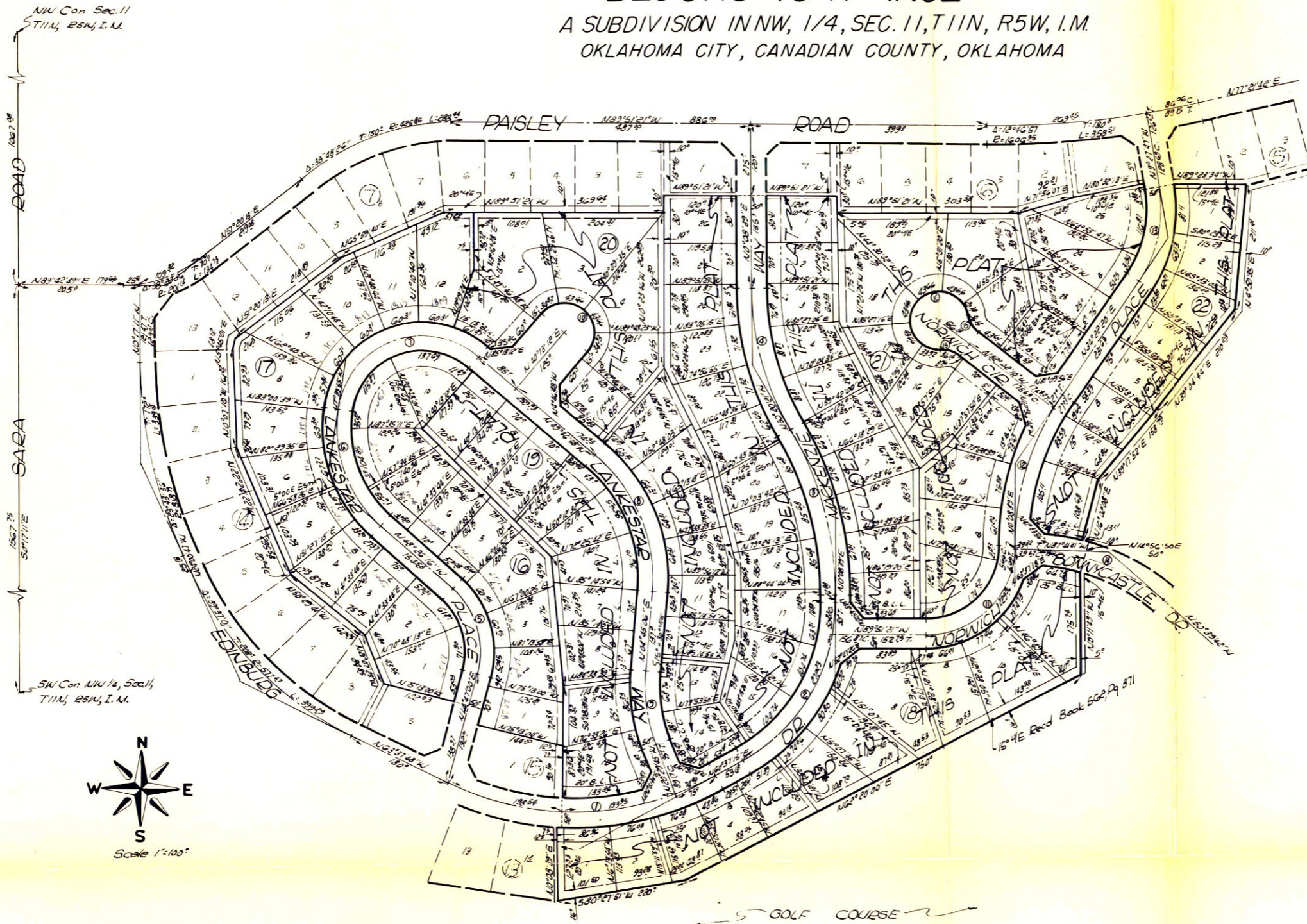


Westbury

28

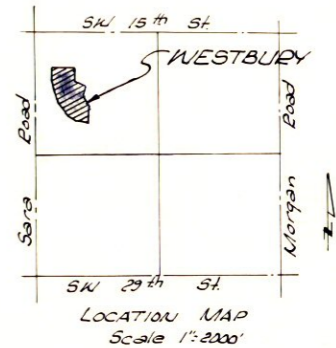
BLOCKS 16-17 INCL

A SUBDIVISION IN NW, 1/4, SEC. 11, T11N, R5W, I.M.
OKLAHOMA CITY, CANADIAN COUNTY, OKLAHOMA



NW Con Sec. 11
T11N, R5W, I.M.

SW Con NW 1/4, Sec. 11,
T11N, R5W, I.M.



Curve Schedule				
#	Δ	T	E	L
①	55°44'57"	263.79	479.85	466.89
②	60°28'36"	178.07	305.49	322.45
③	30°29'00"	150.0	550.51	292.89
④	30°29'00"	130.0	477.11	253.84
⑤	63°13'16"	90.0	146.23	161.36
⑥	56°06'11"	120.0	222.20	220.51
⑦	122°33'17"	261.34	143.54	307.03
⑧	54°31'54"	140.0	271.64	258.54
⑨	25°14'51"	65.0	290.29	127.89
⑩	100°00'00"	-	50.0	157.08
⑪	90°00'00"	150.0	150.0	235.62
⑫	34°13'44"	140.0	454.68	271.62
⑬	43°50'07"	88.0	218.71	167.33
⑭	37°01'59"	120.0	358.30	281.59
⑮	41°24'35"	-	50.0	36.14
⑯	22°49'10"	-	50.0	29.95

Plat By: PHILLIPS & STONG ENGINEERING CO.
2832 Wilshire Blvd. Okla. City, Okla.