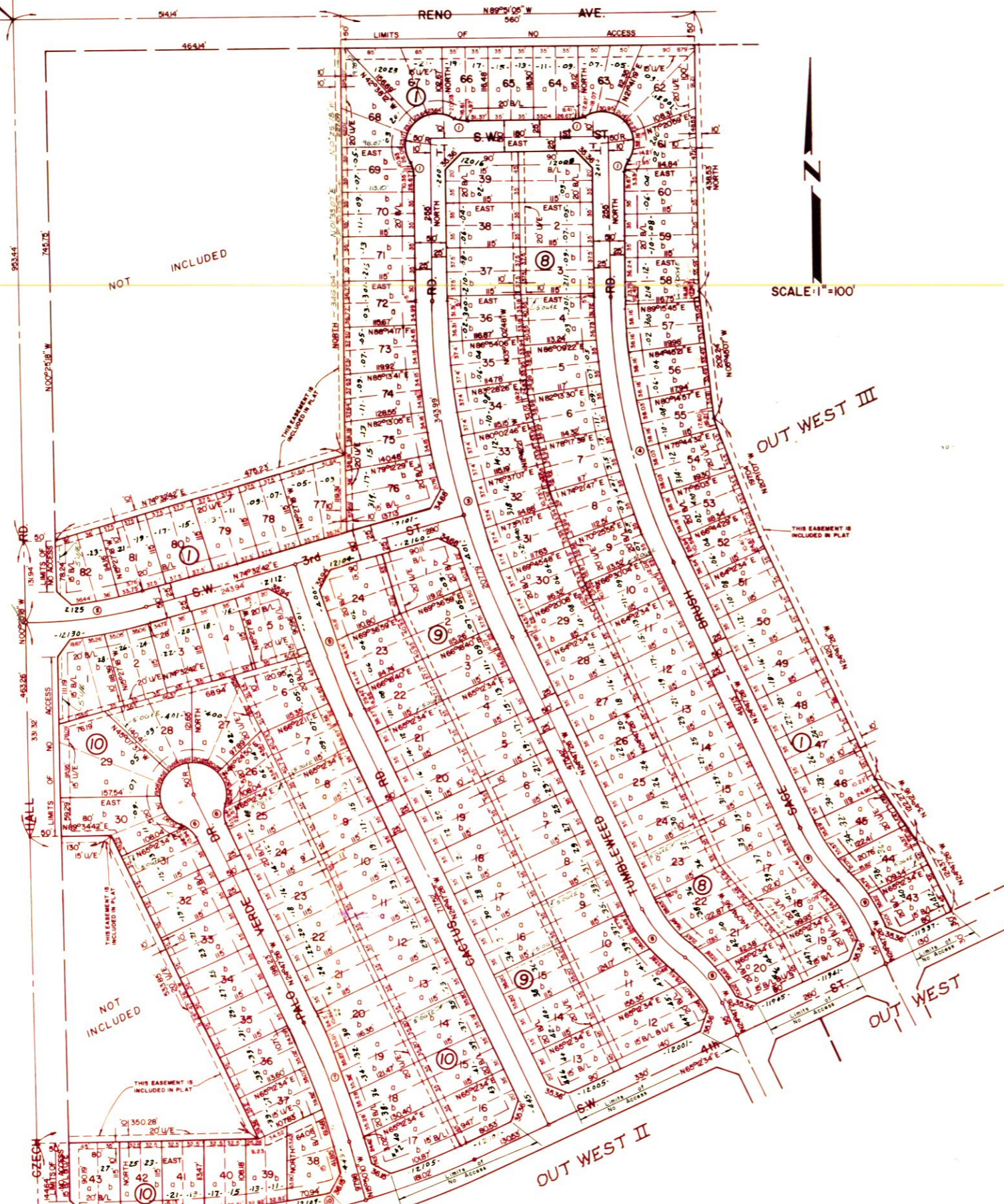


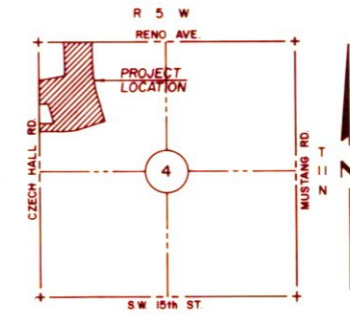
NW/4 NW1/4, SEC. 4
T11N, R5W

WESTON

A PART OF THE NW 1/4 OF SEC. 4, T11N, R5W, I.M.
Canadian County
Oklahoma City, Oklahoma



SCALE 1"=100'



LOCATION MAP

This site is being platted under the provisions of Chapter 25, Section 5300.3C of the Oklahoma City Code, 1970, as amended, and that two or more sites must be combined to form one building site.

CURVE DATA				
NO	DELTA	RADIUS	LENGTH	TANGENT
1	34° 29' 10"	35.36'	21.28'	10.97'
2	15° 27' 18"	706.41'	190.51'	95.86'
3	24° 47' 26"	1,275.27'	551.78'	200.28'
4	24° 47' 26"	995.27'	430.63'	218.74'
5	9° 20' 08"	1,555.27'	253.41'	126.99'
6	44° 59' 16"	35.36'	27.77'	14.65'
7	8° 57' 16"	1,277.13'	199.59'	100.00'
8	30° 00' 00"	186.60'	97.71'	50.00'
9	17° 27' 27"	325.66'	99.23'	50.00'
10	24° 47' 26"	1,158.31'	501.17'	254.57'