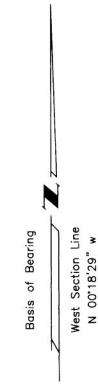


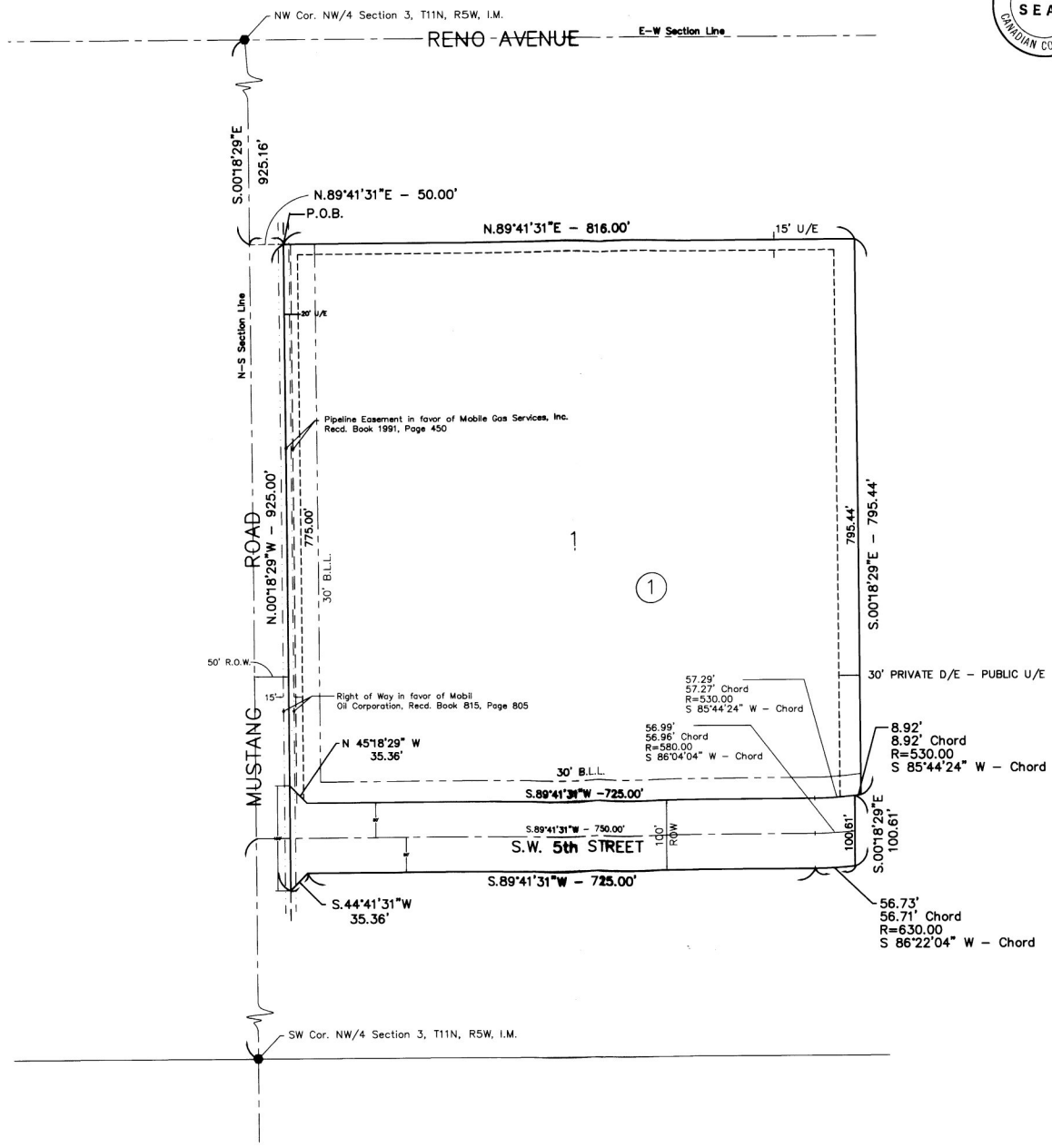
# FINAL PLAT WESTPOINTE PARKWAY PHASE I

A PART OF THE NW/4 OF SEC. 3,  
T 11 N, R 5 W, CANADIAN COUNTY, OKLAHOMA

STATE OF OKLAHOMA } SS  
CANADIAN COUNTY }  
Filed for record 5-19-2001  
at 9:44 A.M. and recorded in  
Book 11 Page 277  
Fee \$ 12.00  
MARK MISHOE  
County Clerk  
Deputy



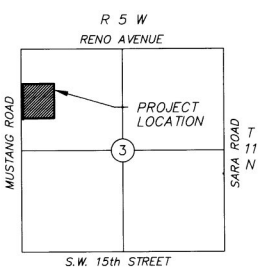
SCALE: 1" = 100'



### LEGAL DESCRIPTION

A part of the NW/4 of Section Three (3), Township Eleven (11) North, Range Five (5) West, I.M., Canadian County, Oklahoma, being more particularly described as follows:

COMMENCING at the Northwest Corner of said Section three (3);  
Thence S 00°18'29" E along the West line of said Section a distance of 925.16 feet;  
Thence N 89°41'31" E a distance of 50.00 to a point on the East right-of-way line of State Highway 4 (also known as Mustang Road), said point being the Point or Place of Beginning;  
Thence continuing N 89°41'31" E a distance of 816.00 feet;  
Thence S00°18'29" E and parallel to the West line of said section a distance of 795.44 feet to a point of a non-tangent curve;  
Thence on a curve to the right having a radius of 530.00 feet, a chord bearing of S 85°44'24" W and a chord distance of 8.92 feet, a curve length of 8.92 feet to a point of non-tangency;  
Thence S 00°18'29" E a distance of 100.61 feet to a point on a non-tangent curve;  
Thence on a curve to the right having a radius of 630.00 feet, a chord bearing of S 86°22'04" W and a chord distance of 56.71 feet, a curve length of 56.73 feet to a point of tangency;  
Thence S 89°41'31" W a distance of 725.00 feet;  
Thence S 44°41'31" W a distance of 35.36 feet to a point on the East right-of-way line of State Highway 4;  
Thence along the East right-of-way line of State Highway 4 N 00°18'29" W a distance of 925.00 feet to the Point or Place of Beginning and containing 16.84 acres more or less.



LOCATION MAP  
SCALE: 1" = 2000'

**R & J ASSOCIATES**  
SURVEYING & MAPPING  
P.O. BOX 193  
MUSTANG, OK 73064  
(405) 376-4411  
C.A. # 1905  
Expires 6/30/01

**W.R. Peacock & Assoc.**  
Consulting Engineers  
P.O. Box 720797 - Oklahoma City, Ok 73172  
412 S. Mustang Road - Oklahoma City, Ok  
(405) 577-2600 • (800) 270-3116 • Fax (405) 577-2603  
Certificate of Authorization Number 2280  
Expiration Date: June 30, 2001