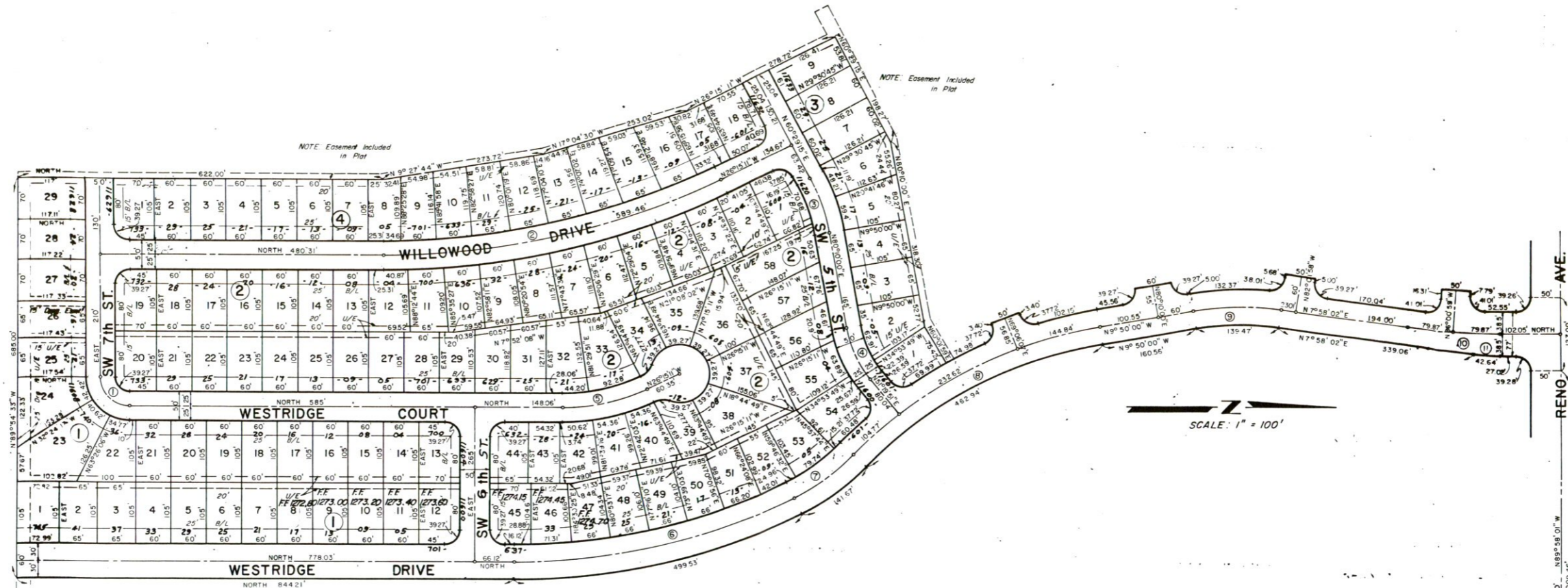
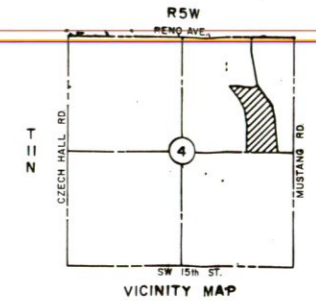


# WESTRIDGE

A SUBDIVISION OF PART OF  
THE NE 1/4 OF SEC. 4, T11N, R5W  
OKLAHOMA CITY, OKLAHOMA  
CANADIAN COUNTY, OKLAHOMA



CURVE DATA				
No.	Radius	Delta	Length	Tangent
1	50	90°00'00"	78.54	50
2	1286.47	26°15'11"	589.46	300
3	288.88	19°40'45"	99.01	50
4	194.48	28°50'09"	97.88	50
5	322.85	26°15'11"	147.93	75.29
6	1075	25°54'04"	485.96	247.21
7	360.77	20°46'19"	130.80	66.12
8	750	36°50'24"	482.23	249.78
9	478.92	17°48'02"	148.79	75
10	1148.77	07°58'02"	159.74	80
11	306.67	07°58'02"	42.64	21.36
12	25.00	86°26'20"	37.72	23.49
13	25.00	86°26'20"	37.72	23.49
14	25.00	93°39'01"	41.01	26.80
15	25.00	87°06'08"	38.01	23.77
16	25.00	90°00'00"	39.27	25.00
17	25.00	86°26'20"	37.72	23.49

POINT OF BEGINNING  
NE 1/4, Sec. 4, T11N, R5W