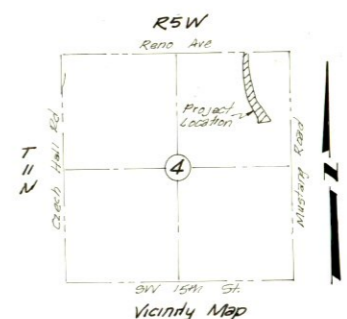
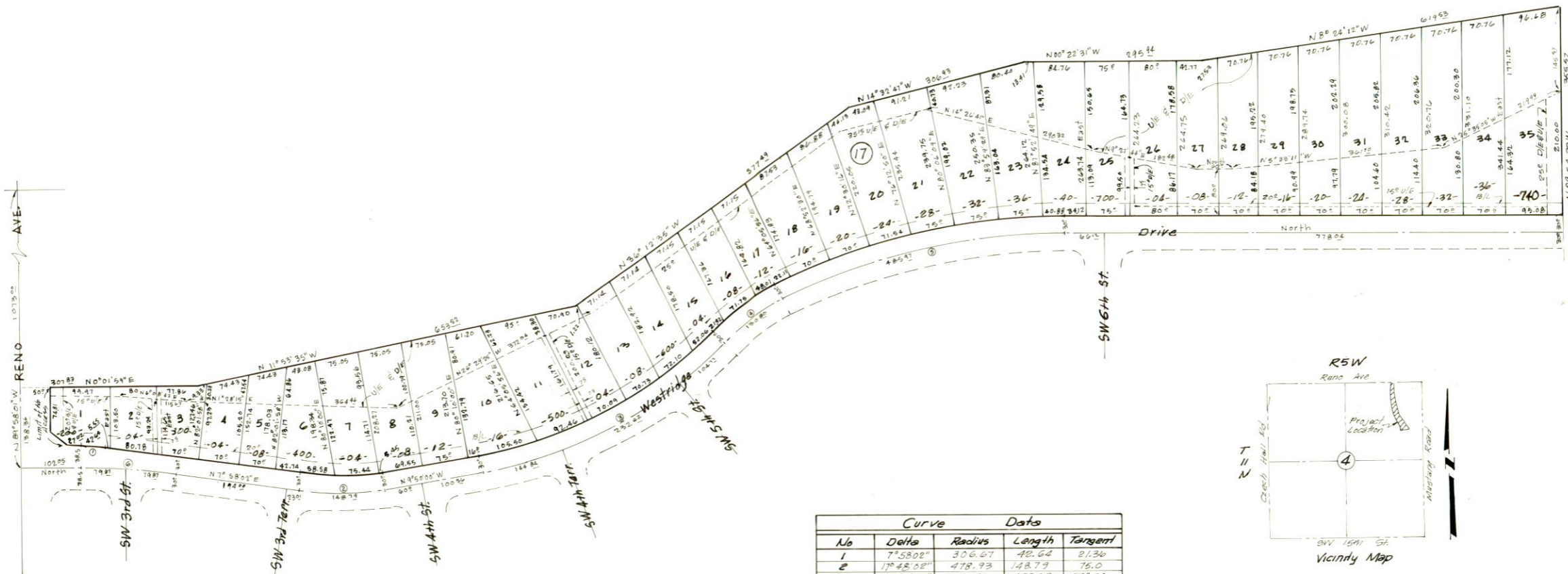




# WESTRIDGE II

A SUBDIVISION OF PART OF THE  
 NE 1/4, of Sec. 4, T11N, R5W, I.M.  
 OKLAHOMA CITY, CANADIAN COUNTY, OKLAHOMA



Curve		Data		
No	Delta	Radius	Length	Tangent
1	7°58'02"	306.67	40.64	21.36
2	17°48'02"	478.93	148.79	75.0
3	36°50'24"	750.00	482.23	249.78
4	20°46'19"	360.78	130.80	66.24
5	25°54'04"	1075.00	485.97	247.21
6	7°58'02"	1148.78	159.74	80.00