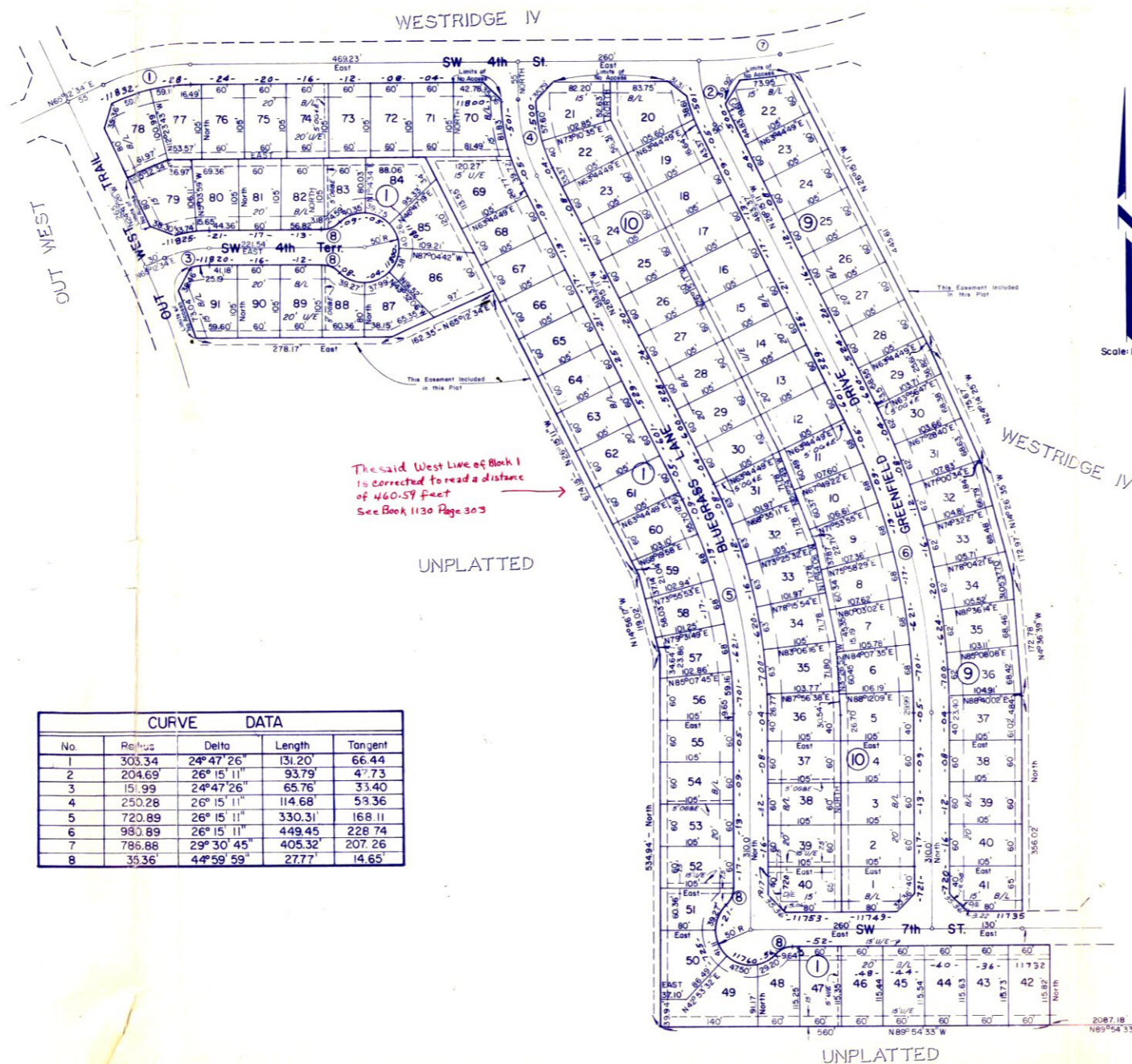


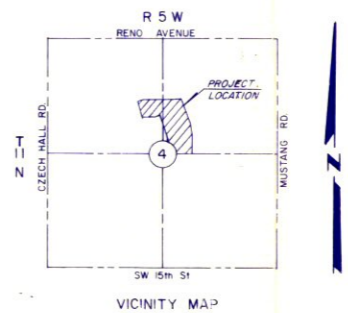
WESTRIDGE V

A SUBDIVISION OF PART OF
THE N. 1/2 OF SEC. 4, T11N, R5W, I.M.
OKLAHOMA CITY, OKLAHOMA
CANADIAN COUNTY, OKLAHOMA



The said West Line of Block 1 is corrected to read a distance of 460.59 feet. See Book 1130 Page 303.

CURVE DATA				
No.	Radius	Delta	Length	Tangent
1	303.34	24° 47' 26"	131.20	66.44
2	204.69	26° 15' 11"	93.79	47.73
3	151.99	24° 47' 26"	65.76	33.40
4	250.28	26° 15' 11"	114.68	59.36
5	720.89	26° 15' 11"	330.31	168.11
6	980.89	26° 15' 11"	449.45	228.74
7	786.88	29° 30' 45"	405.32	207.26
8	38.36	44° 59' 59"	27.77	14.65



SE Cor., N 1/2, Sec. 4,
T11N, R5W, I.M.