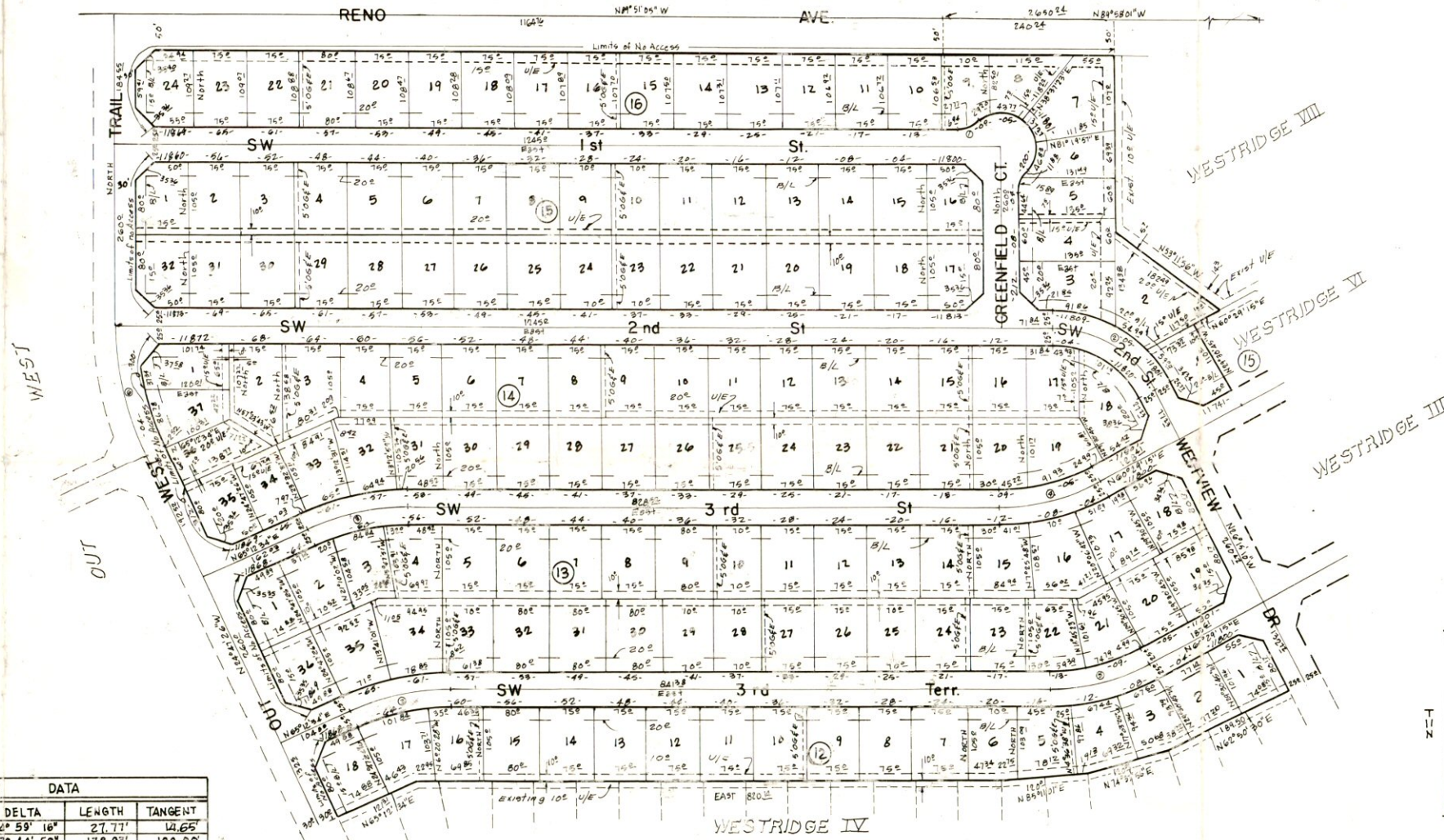


WESTRIDGE VII

A SUBDIVISION OF PART OF THE
NORTH 1/2 OF SEC. 4 T11N, R5W, I.M.

OKLAHOMA CITY, CANADIAN COUNTY, OKLAHOMA



CURVE DATA				
NO.	RADIUS	DELTA	LENGTH	TANGENT
1	35.36'	42° 58' 18"	27.71'	12.65'
2	160.82'	67° 44' 50"	178.93'	100.00'
3	341.25'	24° 47' 28"	147.66'	75.00'
4	291.27'	25° 30' 45"	158.03'	76.72'
5	285.50'	25° 30' 45"	147.06'	75.20'
6	440.27'	24° 47' 28"	190.56'	96.72'

