

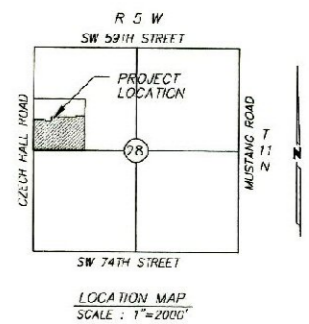
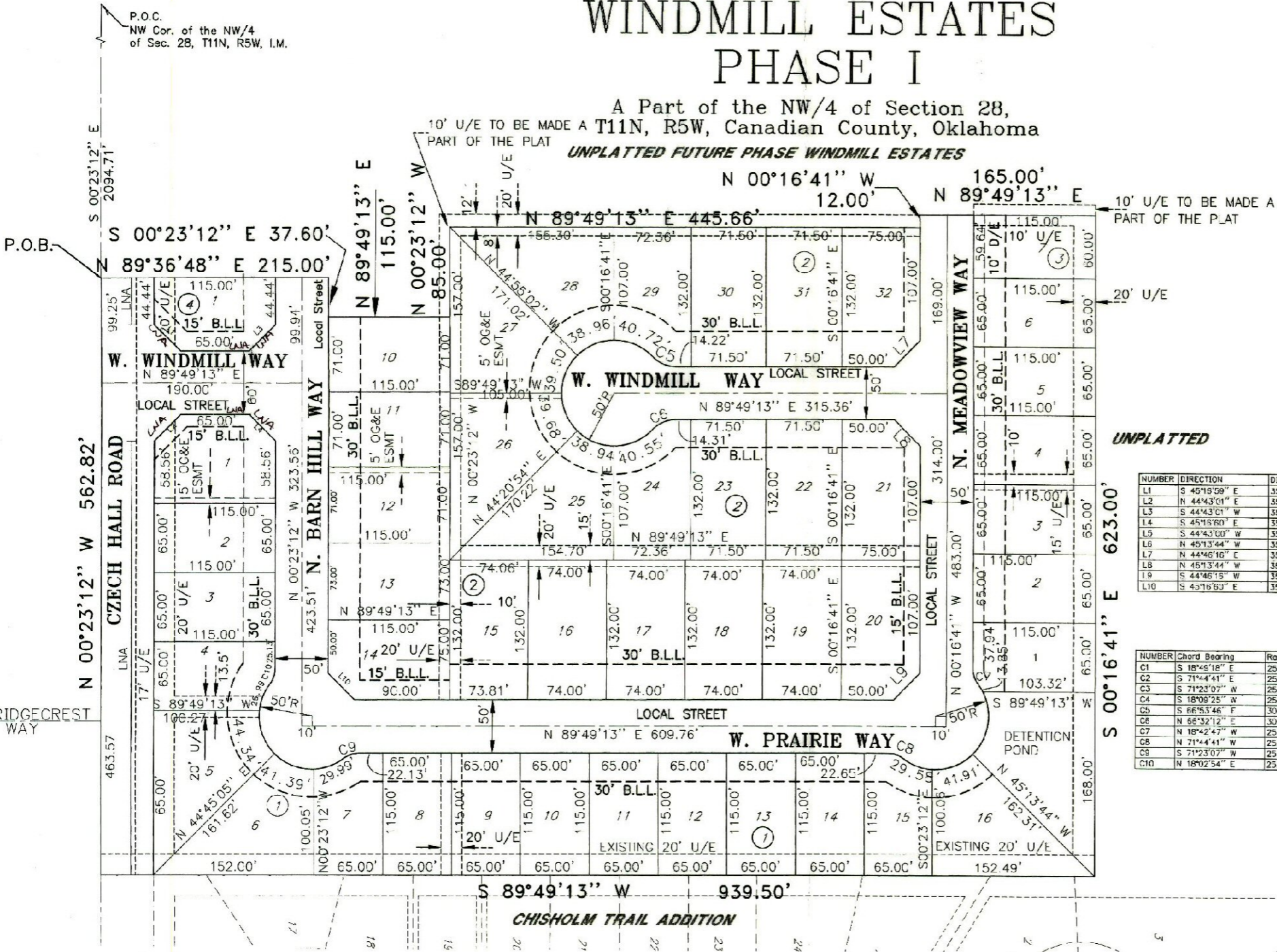
FINAL PLAT OF WINDMILL ESTATES PHASE I

A Part of the NW/4 of Section 28,
T11N, R5W, Canadian County, Oklahoma
UNPLATTED FUTURE PHASE WINDMILL ESTATES

COUNTY CLERK
OFFICIAL
SEAL
CANADIAN COUNTY, OKLAHOMA

Doc # 2004018843
By: P
Pg 24-24
DATE 07/09/04 14:20:17
Filing Fee \$30.00
Documentary Tax \$0.00
State of Oklahoma
County of CANADIAN
CANADIAN County Clerk
PHYLLIS BLAIR

P.O.C.
NW Cor. of the NW/4
of Sec. 28, T11N, R5W, I.M.



SCALE: 1"=50'

UNPLATTED

NUMBER	DIRECTION	DISTANCE
L1	S 45°18'59" E	35.42'
L2	N 44°43'01" E	35.29'
L3	S 44°43'01" W	35.29'
L4	S 45°18'59" E	35.42'
L5	S 44°43'00" W	35.29'
L6	N 45°13'44" W	35.39'
L7	N 44°46'16" E	35.32'
L8	N 45°13'44" W	35.39'
L9	S 44°46'16" W	35.32'
L10	S 45°18'59" E	35.42'

NUMBER	Chord Bearing	Radius	Length
C1	S 18°45'18" E	25.00'	16.09'
C2	S 71°4'41" E	25.00'	16.09'
C3	S 71°23'07" W	25.00'	16.09'
C4	S 18°09'25" W	25.00'	16.09'
C5	S 66°53'46" F	30.00'	24.38'
C6	N 66°32'12" E	30.00'	24.38'
C7	N 16°2'47" W	25.00'	16.09'
C8	N 71°4'41" W	25.00'	16.09'
C9	S 71°23'07" W	25.00'	16.09'
C10	N 18°02'54" E	25.00'	16.09'

LEGAL DESCRIPTION:

A tract of land lying in the Northwest Quarter (NW/4) of Section Twenty-Eight (28), Township Eleven (11) North, Range Five (5) West of the Indian Meridian, Canadian County, Oklahoma, Being more particularly described as follows:

Commencing at the Northwest corner of the NW/4 of Section 28, T11N, R5W, I.M.;

Thence S 00°23'12" E along the West line of Said Section, a distance of 2094.71' to the Point of Beginning;

Thence N 89°36'48" E a distance of 215.00';

Thence S 00°23'12" E a distance of 37.60';

Thence N 89°49'13" E a distance of 115.00';

Thence N 00°23'12" W a distance of 85.00';

Thence N 89°49'13" E a distance of 445.66';

Thence N 00°16'41" W a distance of 12.00';

Thence N 89°49'13" E a distance of 165.00';

Thence S 00°16'41" E a distance of 623.00';

Thence S 89°49'13" W a distance of 939.50';

Thence N 00°23'12" W a distance of 562.82' to the Point of Beginning;

Containing 557142.8552 square feet or 12.7902 acres more or less.

LNA = Limits of No Access



Stoneroad, Inc.
Meeting all surveying needs...
C.A. 4200 Exp: C6/30/05
stonerood@cox.net
Phone: (405) 749-7985 FAX: (405) 749-9997
PO 1012 Mustang, Oklahoma 73064
10804 Quail Plaza Dr #200 Oklahoma City, Oklahoma 73120