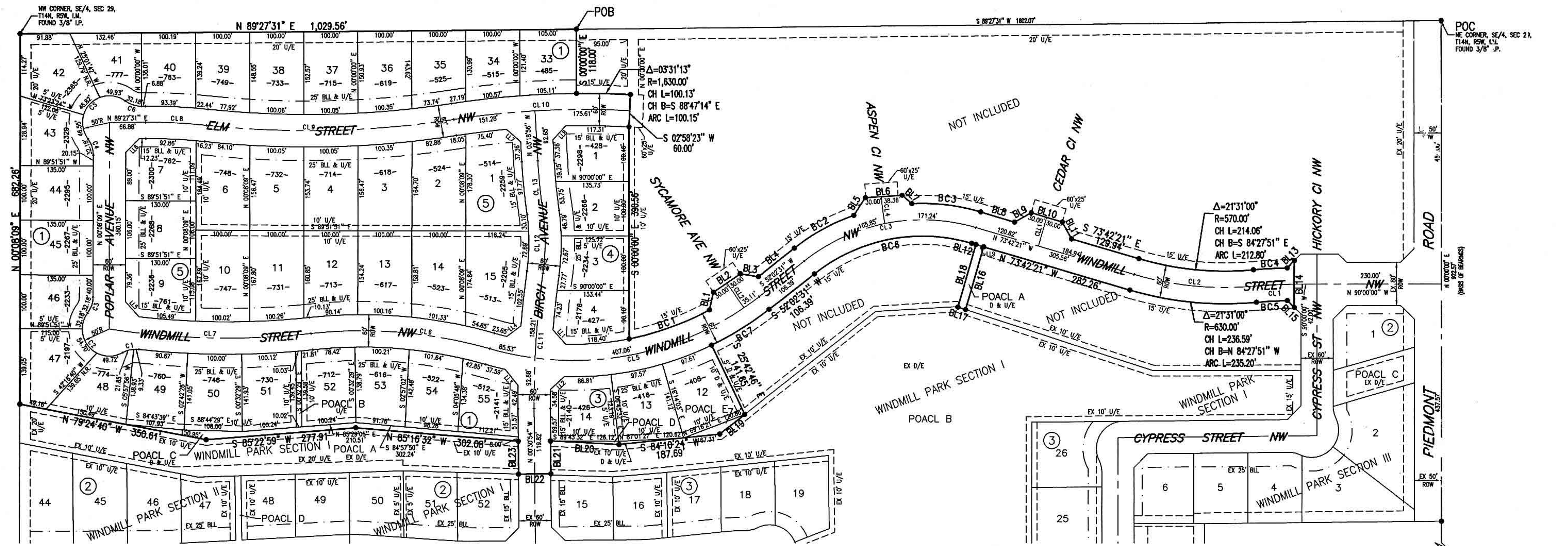


FINAL PLAT OF WINDMILL PARK SECTION IV

A SUBDIVISION OF A PART OF THE N/2, SE/4 OF
SECTION 29, T 14 N-R 5 W, I.M.
CITY OF PIEDMONT, CANADIAN COUNTY, OKLAHOMA

Doc#: P 2007 2
Bk&Pg: PL 9 160-161
Filed: 02-02-2007
03:49:24 PM
Canadian County, OK



NUMBER	DIRECTION	DISTANCE
BL1	N 12°55'57" E	33.91'
BL2	N 55°38'03" E	60.00'
BL3	S 81°09'03" E	34.24'
BL4	N 52°02'31" E	84.61'
BL5	N 33°40'17" E	38.90'
BL6	N 86°31'31" E	68.36'
BL7	S 49°29'35" E	23.70'
BL8	S 73°42'21" E	65.52'
BL9	N 61°17'39" E	35.36'
BL10	S 73°42'21" E	60.00'
BL11	S 28°42'21" E	35.36'
BL12	N 73°42'21" W	8.30'
BL13	N 45°00'00" E	18.53'
BL14	S 00°00'00" E	86.00'
BL15	N 45°00'00" W	18.23'
BL16	S 16°17'39" W	120.44'
BL17	N 71°57'27" W	15.01'
BL18	N 16°17'39" E	119.98'
BL19	S 52°02'31" W	58.43'
BL20	N 87°02'16" W	127.00'
BL21	S 00°30'54" E	60.25'
BL22	S 89°29'06" W	60.00'
BL23	N 00°30'54" W	60.25'

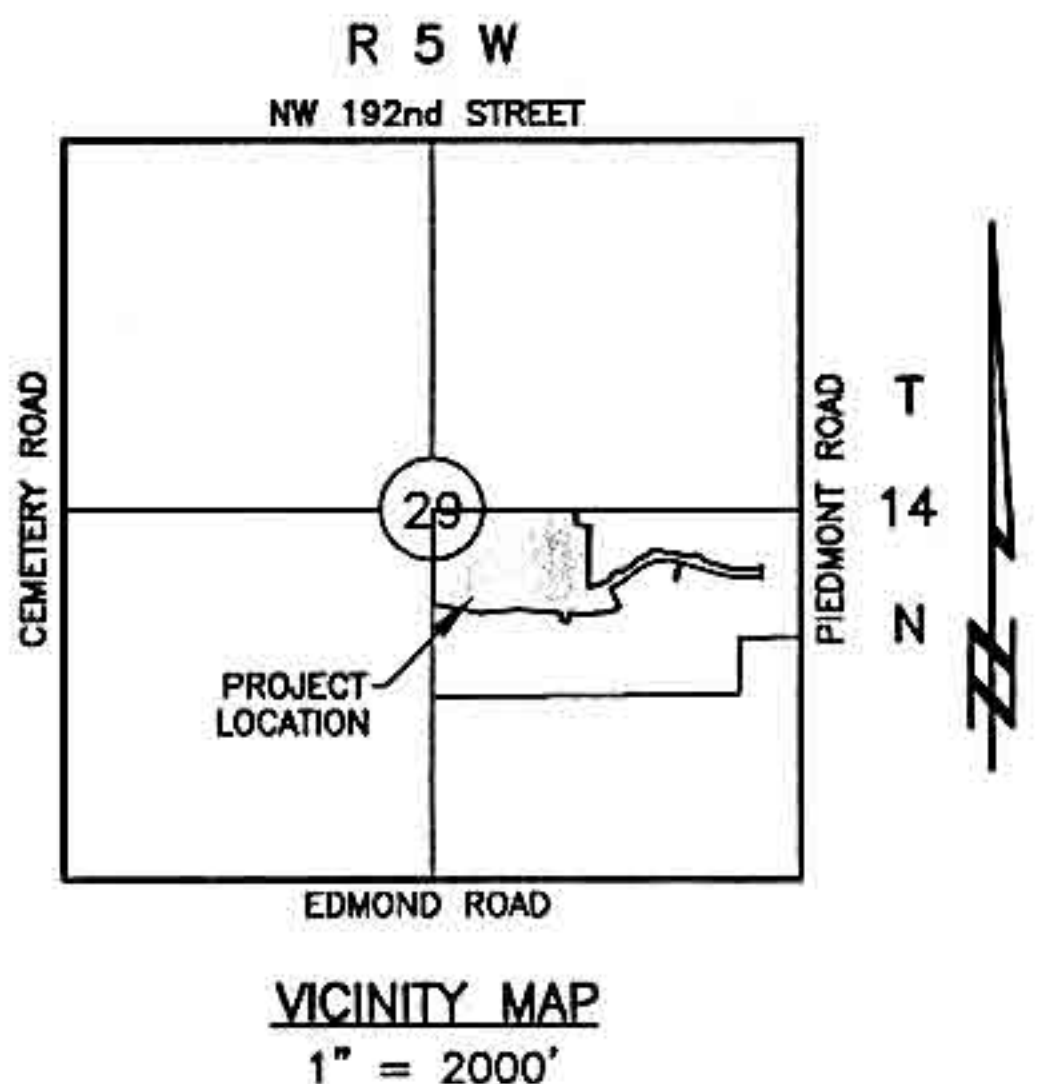
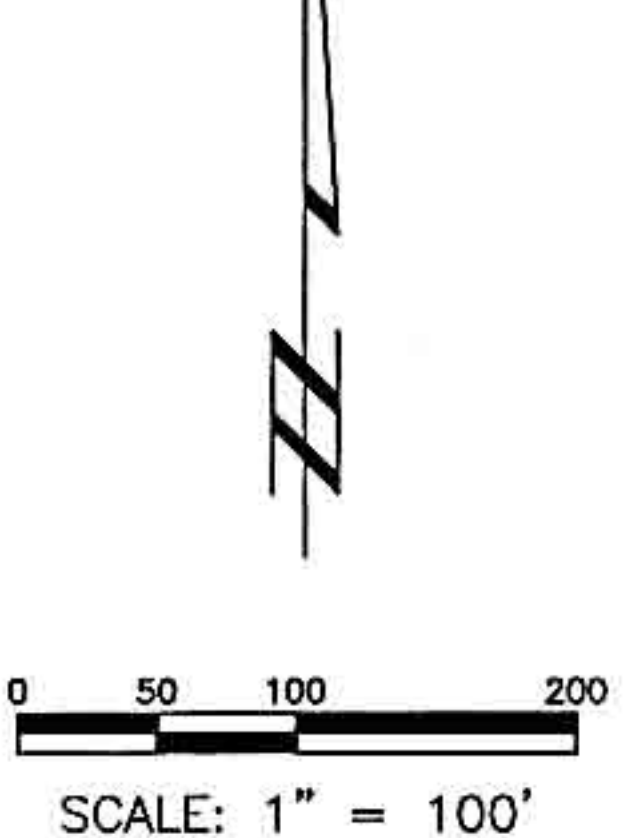
NUMBER	DELTA	RADIUS	LENGTH	CHORD BEARING	CH LENGTH
BC1	171°10'05"	530.00'	158.96'	N 70°10'28" E	158.37'
BC2	18°41'19"	386.00'	125.91'	N 81°23'11" E	125.35'
BC3	191°11'56"	386.00'	129.34'	S 83°18'19" E	128.74'
BC4	04°19'04"	830.00'	62.55'	N 88°56'11" E	62.54'
BC5	04°15'47"	770.00'	57.29'	S 88°54'33" W	57.28'
BC6	54°15'08"	326.00'	308.68'	S 79°10'05" W	297.28'
BC7	12°14'43"	590.00'	126.09'	S 58°09'52" W	125.86'

NUMBER	DELTA	RADIUS	LENGTH	CHORD BEARING	CH LENGTH
CL1	05°13'21"	800.00'	72.92'	S 87°23'20" W	72.89'
CL2	21°30'60"	600.00'	225.32'	N 84°27'51" W	224.00'
CL3	54°15'08"	356.00'	337.09'	S 79°10'05" W	324.64'
CL4	07°37'10"	375.00'	48.87'	N 07°17'04" W	49.83'
CL5	53°58'28"	580.00'	527.70'	S 79°02'15" W	508.39'
CL6	22°18'20"	860.00'	334.80'	N 65°07'11" W	332.69'
CL7	14°47'56"	1450.00'	374.51'	N 88°52'23" W	373.47'
CL8	06°26'37"	1000.00'	112.46'	S 87°19'10" E	112.40'
CL9	14°38'06"	1800.00'	459.78'	N 88°35'05" E	458.53'
CL10	11°42'21"	1600.00'	326.89'	N 87°07'12" E	326.32'
CL11	08°33'48"	1680.00'	251.09'	N 03°46'00" E	250.86'
CL12	15°55'04"	400.00'	111.13'	N 00°05'22" E	110.77'
CL13	04°33'15"	1200.00'	95.38'	N 05°35'33" W	95.36'

NUMBER	DIRECTION	DISTANCE
LL1	N 41°30'17" W	35.00'
LL2	S 47°00'10" W	34.81'
LL3	N 38°45'07" W	38.28'
LL4	S 53°09'34" W	32.83'
LL5	N 41°26'36" W	37.40'
LL6	N 44°47'50" E	35.58'
LL7	S 49°05'28" E	34.87'
LL8	S 42°27'38" W	34.87'
LL9	N 73°42'21" W	15.00'

NUMBER	DIRECTION	DISTANCE
CLL1	N 16°17'39" E	55.00'
CLL2	N 34°21'57" W	55.85'

NUMBER	DELTA	RADIUS	LENGTH	CHORD BEARING	CH LENGTH
C1	35°43'53"	50.00'	31.18'	S 78°21'08" W	30.68'
C2	156°31'09"	50.00'	136.59'	N 41°15'14" W	97.91'
C3	36°52'12"	50.00'	32.18'	N 18°34'15" E	31.62'
C4	36°52'12"	50.00'	32.18'	N 18°17'57" W	31.62'
C5	163°03'45"	50.00'	142.30'	N 44°47'50" E	98.91'
C6	36°52'12"	50.00'	32.18'	S 72°06'23" E	31.62'



- LEGEND**
- BLL=BUILDING LIMIT LINE
 - SIP=SET IRON PIN
 - FIP=FOUND IRON PIN
 - SPK=SET PK NAIL
 - FPK=FOUND PK NAIL
 - U/E=UTILITY EASEMENT
 - D/E=DRAINAGE EASEMENT
 - LONA=LIMITS OF NO ACCESS
 - POACL=PROPERTY OWNERS' ASSOC. COMMON LOT
 - N.R.=NONRADIAL

NOTE:
A 3/8" IRON PIN HAS BEEN SET AT EACH LOT CORNER.

- PLAT NOTES**
1. All lots shown on this plat must be used only for single family residential development.
 2. Common lots will be owned and maintained by the property owners' association.
 3. A sidewalk shall be constructed by the developer along common areas prior to the issuance of any occupancy permit in the addition.
 4. A sidewalk shall be constructed by the builder on each lot where it abuts a local and/or a collector street. The sidewalk is required at the building permit stage and must be installed prior to the issuance of the occupancy permit.
 5. Owners of corner lots shall incorporate wheelchair ramps in sidewalk.
 6. All easements shown outside of the plat boundary are made a part of this plat unless labeled as given by separate instrument.

WINDMILL PARK SECTION IV
PLAT BY: COON ENGINEERING, INC.
2832 W. WILSHIRE BLVD.
OKLAHOMA CITY, OKLAHOMA
405-842-0353
CAR5430702 SHEET 2 OF 2

DATE OF PLAT: DECEMBER 1, 2006