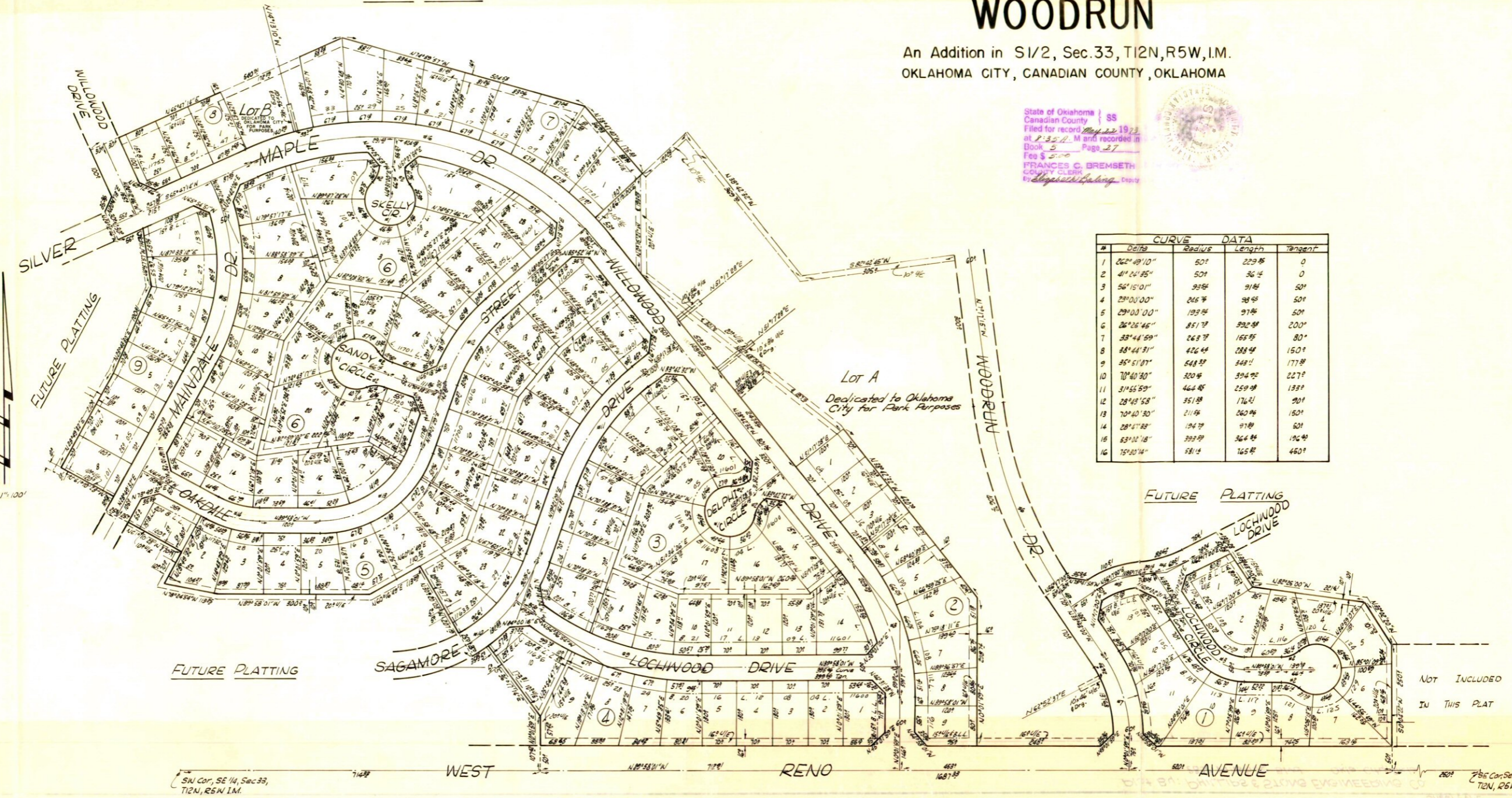
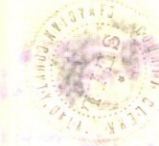


FUTURE PLATTING

WOODRUN

An Addition in S1/2, Sec.33, T12N,R5W,I.M.
OKLAHOMA CITY, CANADIAN COUNTY, OKLAHOMA

State of Oklahoma } SS
Canadian County }
Filed for record May 22 1973
at 2:35 P.M. and recorded in
Book 5 Page 27
Fee \$
FRANCES C. BREMSETH
COUNTY CLERK
By *Stephanie S. Selberg* Deputy



Scale 1"=100'

CURVE DATA				
#	Delta	Radius	Length	Tangent
1	062° 49' 10"	50'	229.85	0
2	41° 24' 35"	50'	36.4	0
3	56° 15' 01"	93.84	91.84	50'
4	29° 00' 00"	245.76	98.95	50'
5	29° 00' 00"	193.84	97.86	50'
6	26° 26' 45"	851.72	392.88	200'
7	23° 44' 59"	263.72	165.85	80'
8	28° 44' 31"	426.44	288.44	150'
9	25° 51' 07"	548.22	348.44	177.88
10	70° 40' 30"	320.45	394.92	227.7
11	31° 55' 59"	464.85	259.88	133.7
12	28° 48' 58"	351.88	176.21	90'
13	70° 40' 30"	211.56	260.94	150'
14	28° 47' 38"	194.72	97.88	50'
15	63° 02' 18"	393.22	364.84	196.44
16	75° 20' 14"	581.4	765.82	450'

Lot A
Dedicated to Oklahoma City for Park Purposes

NOT INCLUDED
IN THIS PLAT

SW Cor., SE 1/4, Sec.33,
T12N, R5W, I.M.

SW Cor., Sec.33,
T12N, R5W, I.M.

UNPLATTED